

 pullman
ALMAR TIMI AMA

PULLMAN ALMAR TIMI AMA

THE PLACE TO MEET... AND PLAY

MEET
PLAY

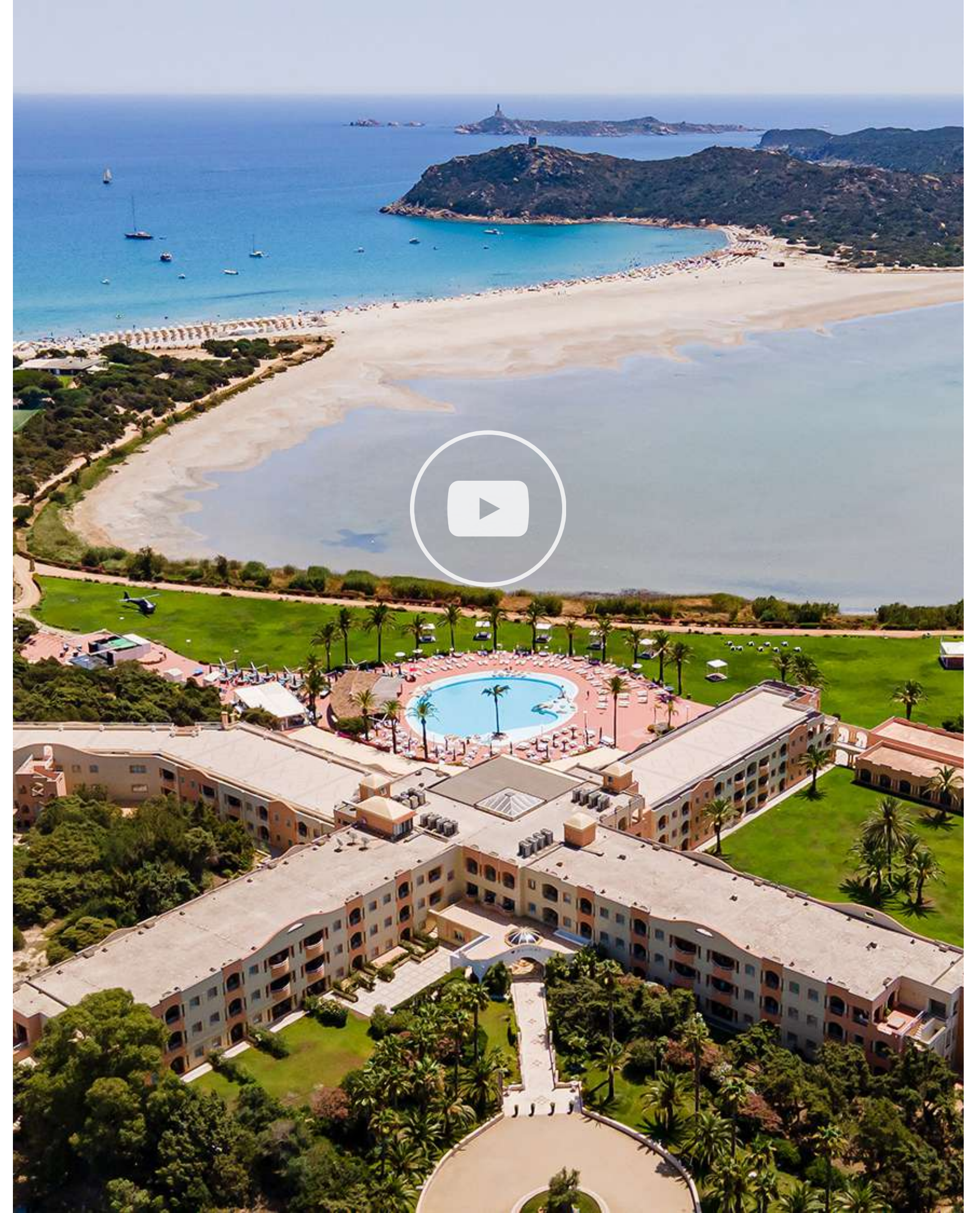


PULLMAN ALMAR TIMI AMA IN A NUTSHELL

Tucked away on Sardinia's southeast tip amid the natural beauty of Capo Carbonara marine protected area, Pullman Almar Timi Ama Resort & Spa 5* overlooks a marvelous lagoon inhabited by pink flamingos and the iconic Porto Giunco Bay.

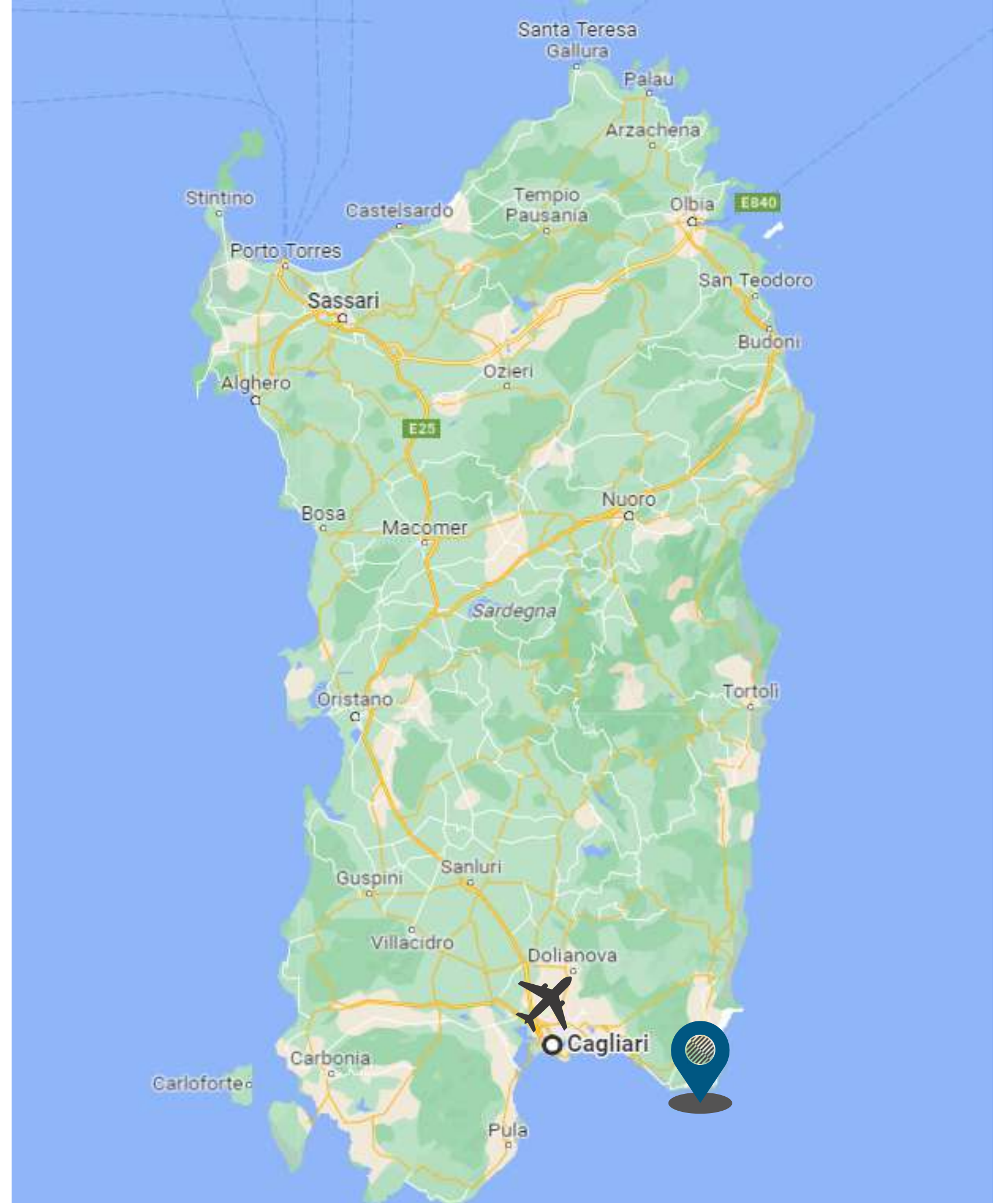
Enjoy the luxurious amenities of a 5-star resort while achieving your business goals in a stunning setting.

- 254 comfortable rooms and suites
- Exclusive venues for events (gala dinners, cocktail parties, beach parties...)
- 4 meeting rooms hosting up to 350 guests
- 25 sq m break out rooms
- 1050 sq m of panoramic terraces and exhibition space
- Arena with 400 seats
- Private beach
- Seawater Spa
- A wide choice of outdoor team building activities
- Event Manager & IT Solutions Manager at disposal during the event



HOW TO REACH US

- CLOSEST AIRPORT: Cagliari Elmas "Mario Mamei" (60 km)
- CLOSEST TOWN: Villasimius (3 km)
- GPS: N 39° 7' 16.58" E 9° 30' 59.32"
- Airport transfers on request (extra charge)
- Free shuttle bus to/from Villasimius (at scheduled times)



Source: Google Maps



A view from a balcony through sheer curtains. The scene shows a beach with many umbrellas, turquoise water, and a hill with a tower on top. The word "rooms" is overlaid in the center.

rooms

MODERN WITH A SARDINIAN TWIST

CLASSIC GARDEN SIDE

20 sq m / 215 sq ft, renovated in 2024, maximum occupancy 2 people, shower, 50-inch Smart TV, Nespresso machine, kettle, USB sockets, accessible rooms available.

IN ALL ROOMS

- Balcony / terrace
- Complimentary Wi-Fi
- Minibar
- A/C
- Safe
- Telephone
- Room service
- Laundry service
- Turn down service
- Hair dryer
- Bathrobes
- Magnifying mirror
- C.O. Bigelow toiletries
- Complimentary water replenished daily:
1 still, 1 sparkling (500 ml)
- Check-in time: from 3 pm
Check-out time: by noon

Suites and other room categories available upon request.

Discover the entire room inventory [here](#) ✨



MODERN WITH A SARDINIAN TWIST

DELUXE ROOM GARDEN SIDE

25 - 30 sq m / 269 - 322 sq ft, renovated in 2024, maximum occupancy, large shower, double sink, 50-inch smart TV, Nespresso machine, kettle, USB sockets, accessible rooms available.

IN ALL ROOMS

- Balcony / terrace
- Complimentary Wi-Fi
- Minibar
- A/C
- Safe
- Telephone
- Room service
- Laundry service
- Turn down service
- Hair dryer
- Bathrobes
- Magnifying mirror
- C.O. Bigelow toiletries
- Complimentary water replenished daily:
1 still, 1 sparkling (500 ml)
- Check-in time: from 3 pm
Check-out time: by noon

Suites and other room categories available upon request.

Discover the entire room inventory [here](#) ✨



PURE MINIMAL COMFORT

SUPERIOR ROOM GARDEN SIDE

20 - 25 sq m / 215 - 269 sq ft, minimal style, max. occ. 3 people, bathroom with separate shower and bathtub, double sink, 50-inch smart TV, Nespresso machine, Bose Docking Station, accessible rooms available.

IN ALL ROOMS

- Balcony / terrace
- Complimentary Wi-Fi
- Minibar
- A/C
- Safe
- Telephone
- Room service
- Laundry service
- Turn down service
- Hair dryer
- Bathrobes
- Magnifying mirror
- C.O. Bigelow toiletries
- Complimentary water replenished daily:
1 still, 1 sparkling (500 ml)
- Check-in time: from 3 pm
Check-out time: by noon

Suites and other room categories available upon request.

Discover the entire room inventory [here](#) ✨



TIMELESS MEDITERRANEAN VIBES

STANDARD ROOM GARDEN SIDE

20 sq m / 215 sq ft, Mediterranean style, max. occ. 2 people, bathroom with shower, 43-inch smart TV, accessible rooms available.

IN ALL ROOMS

- Balcony / terrace
- Complimentary Wi-Fi
- Minibar
- A/C
- Safe
- Telephone
- Room service
- Laundry service
- Turn down service
- Hair dryer
- Bathrobes
- Magnifying mirror
- C.O. Bigelow toiletries
- Complimentary water replenished daily:
1 still, 1 sparkling (500 ml)
- Check-in time: from 3 pm
Check-out time: by noon

Suites and other room categories available upon request.

Discover the entire room inventory [here](#) ✨





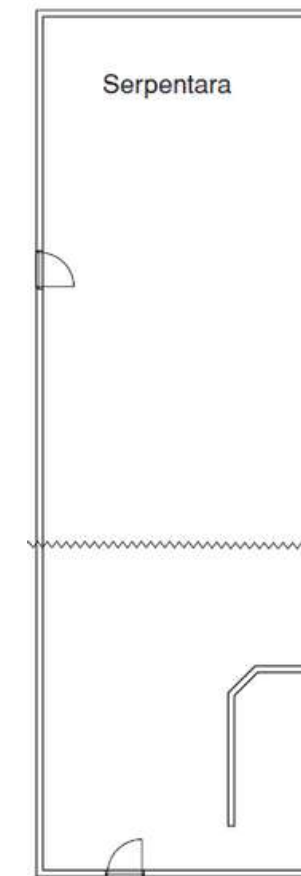
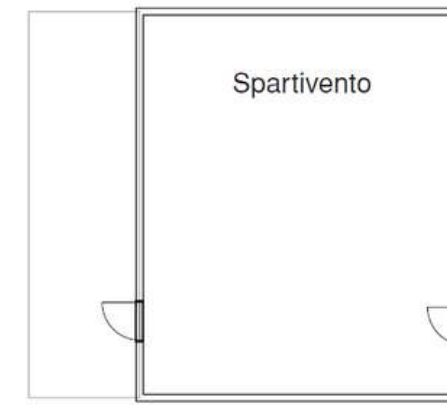
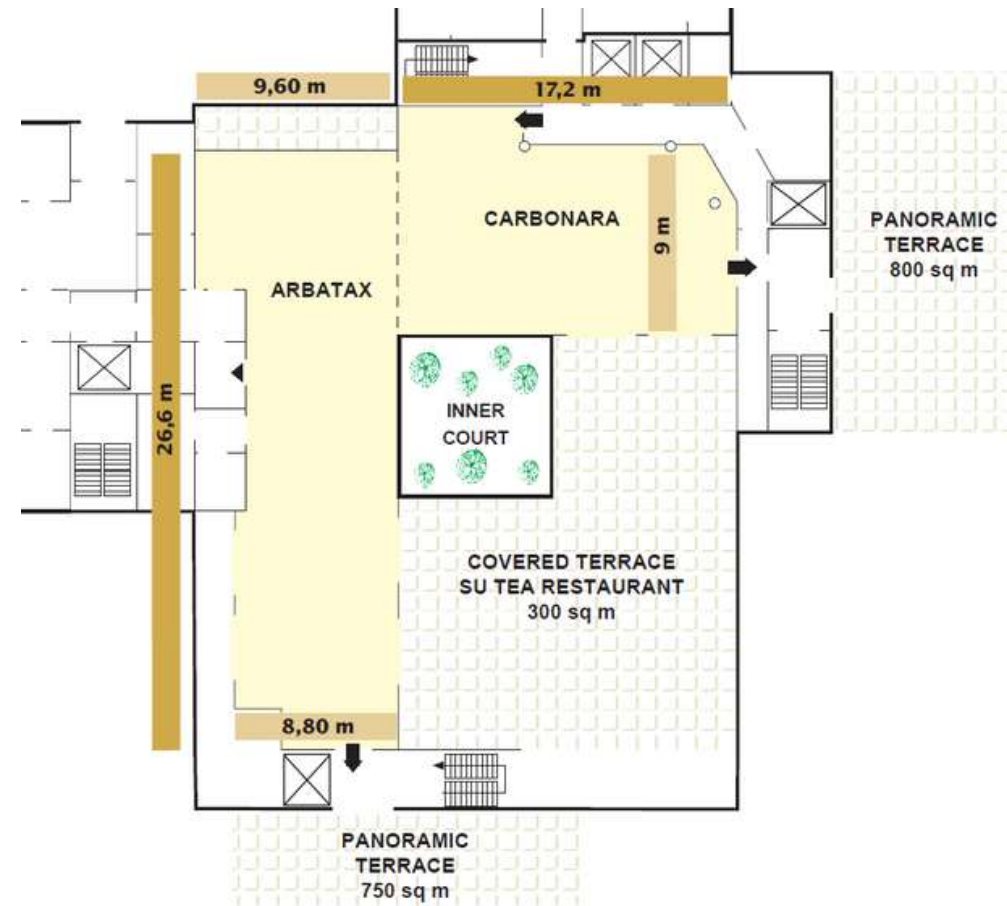
meeting
rooms

MEETING ROOMS & BANQUETING: CAPACITY CHART

	SURFACE (M ²)	HEIGHT (M ²)	 THEATRE	 CLASSROOM	 U-SHAPE	 BANQUET	 COCKTAIL
<i>Meeting rooms</i>							
SERPENTARA	80	2.7	100	-	40	-	-
SPARTIVENTO	50	2.7	-	-	20	-	-
ARBATAX	210	2.8	200	120	30	-	-
CARBONARA	150	2.8	150	80	60	-	-
ARBATAX + CARBONARA	360	2.8	350	200	-	-	-
<i>Restaurants and other locations for gala dinners</i>							
LA VERANDA	1000	3.0	-	-	-	600	600
I GINEPRI	400	2.8	-	-	-	200	300
SU TEA	250	3.0	-	-	-	70	200
PANORAMIC TERRACE	800	-	-	-	-	400	600
POOL SIDE / GARDEN	800	-	-	-	-	400	600



MEETING ROOMS: MAIN FEATURES



ARBATAX*

Floor: 3 (panoramic view)
 Surface: 210 mq / 2260,42 sq ft
 Height: 2,80 m / 9,19 ft
 Capacity: up to 200 people
 Stage
 Natural light

CARBONARA*

Floor: 3 (panoramic view)
 Surface: 150 mq / 1614,59 sq ft
 Height: 2,80 m / 9,19 ft
 Capacity: up to 150 people
 Natural light

SPARTIVENTO

Floor: 0
 Surface: 50 mq / 538,17 sq ft
 Height: 2,70 m / 8,86 ft
 Capacity: up to 20 people
 Natural light

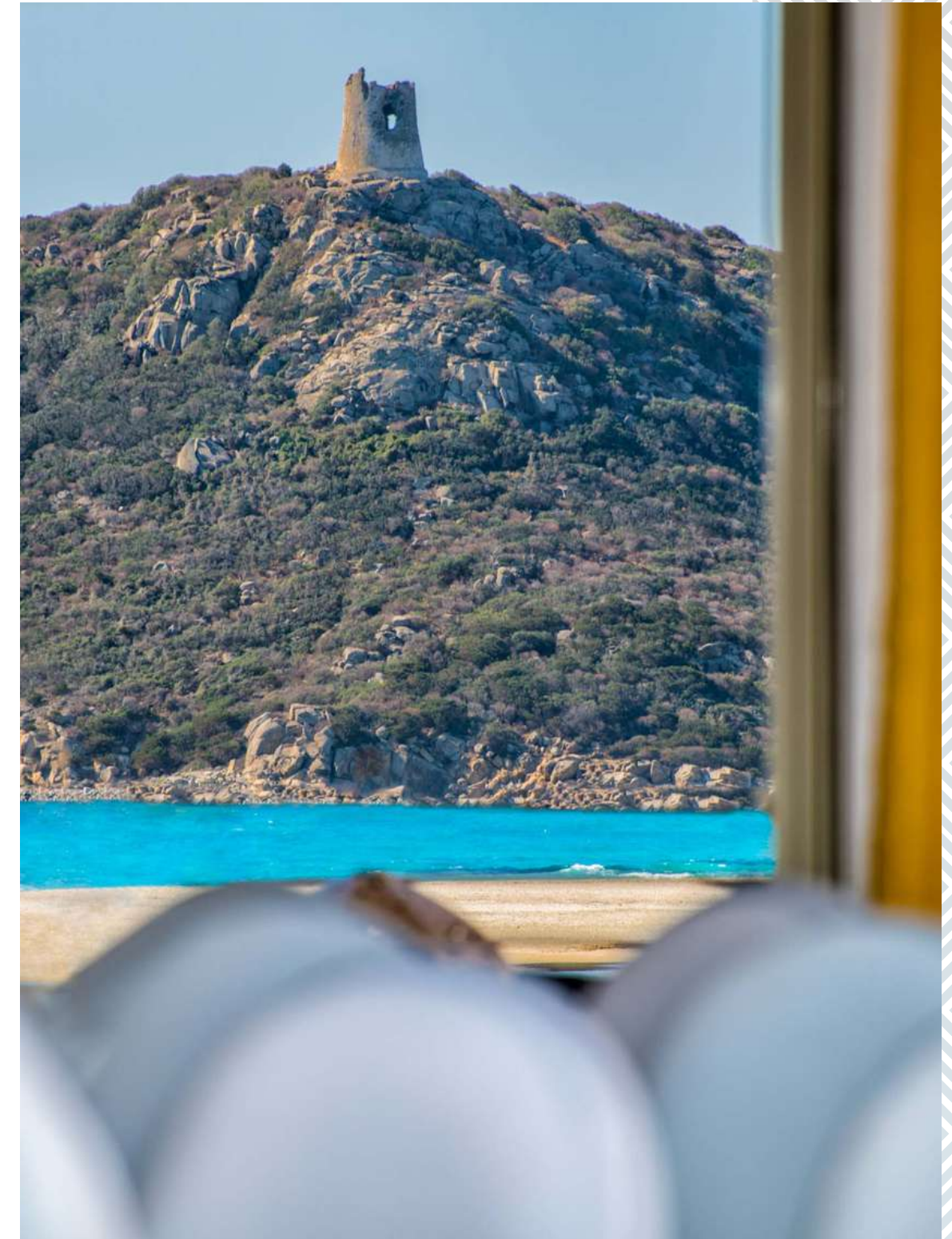
SERPENTARA

Floor: 0
 Surface: 80 mq / 861,11 sq ft
 Height: 2,70 m / 8,86 ft
 Capacity: up to 100 people

*Arbatax and Carbonara meeting rooms can be combined, allowing for a maximum capacity of 350 people.



MEETING ROOMS: ARBATAX



Pullman Almar Tiri Ama. The place to meet.. and play



MEETING ROOMS: CARBONARA



MEETING ROOMS: SPARTIVENTO





food & beverage
venues

RESTAURANTS: LA VERANDA

Poolside restaurant, open kitchen, international cuisine, buffet-style breakfast, lunch and themed dinners*.

The restaurant has a spacious air-conditioned indoor dining area, but most of the tables are placed outside all around the pool.

 Up to 600 guests

 Up to 600 guests

**Half-board meals are served at La Veranda restaurant (buffet breakfast and dinner excluding drinks)*



RESTAURANTS: LA VERANDA



RESTAURANTS: I GINEPRI

Beachfront restaurant surrounded by century-old junipers, sit-down or buffet dinners followed by open bar and DJ set, Sardinian cuisine.

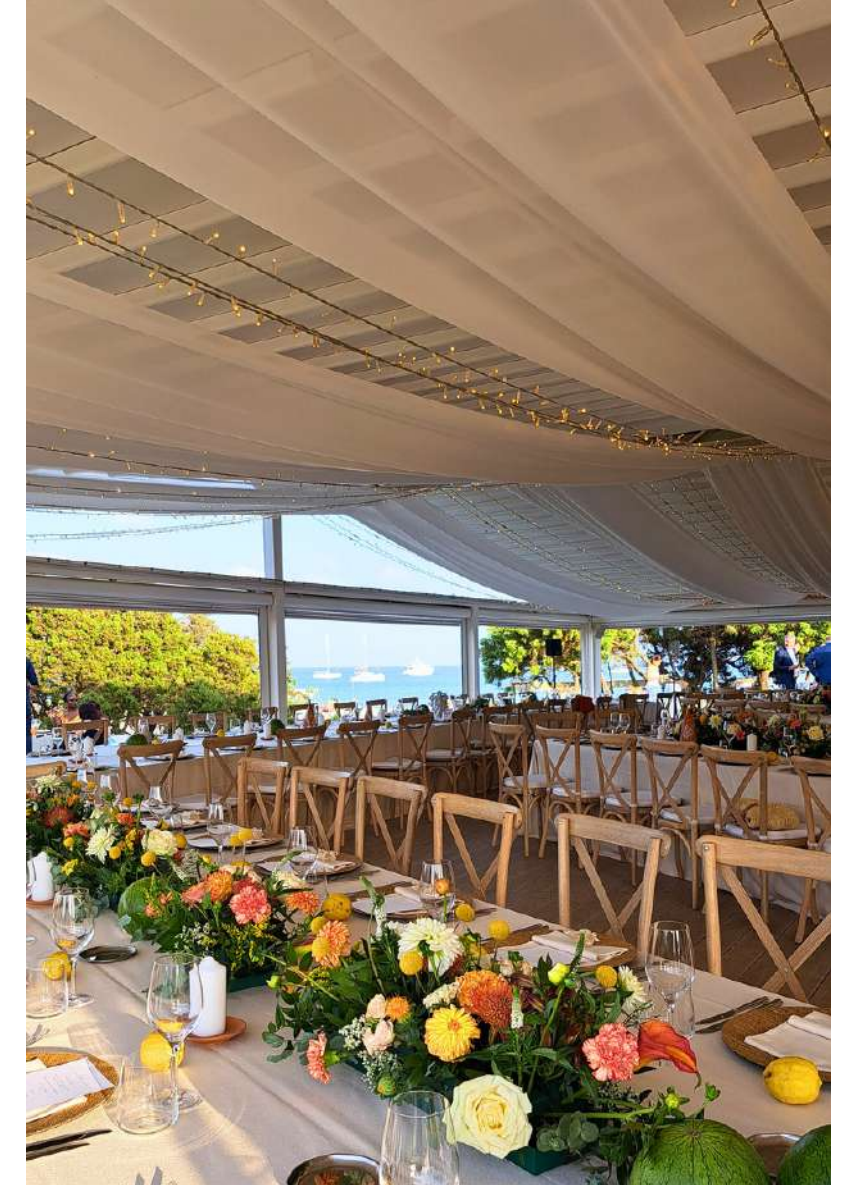
The restaurant consists of a single covered dining hall with an open layout that can be fully closed off in case of bad weather.



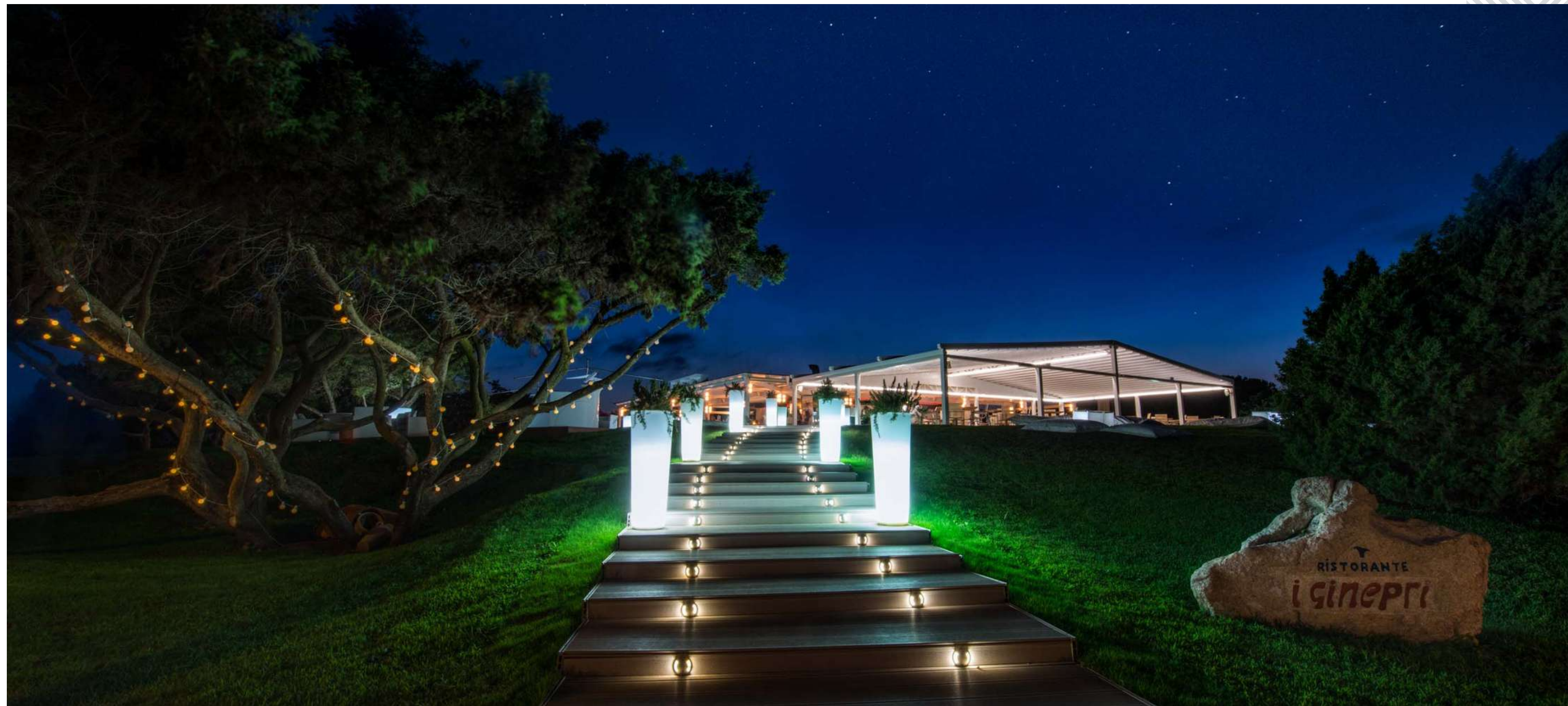
Up to 200 guests



Up to 300 guests



RESTAURANTS: I GINEPRI



RESTAURANTS: SU TEA

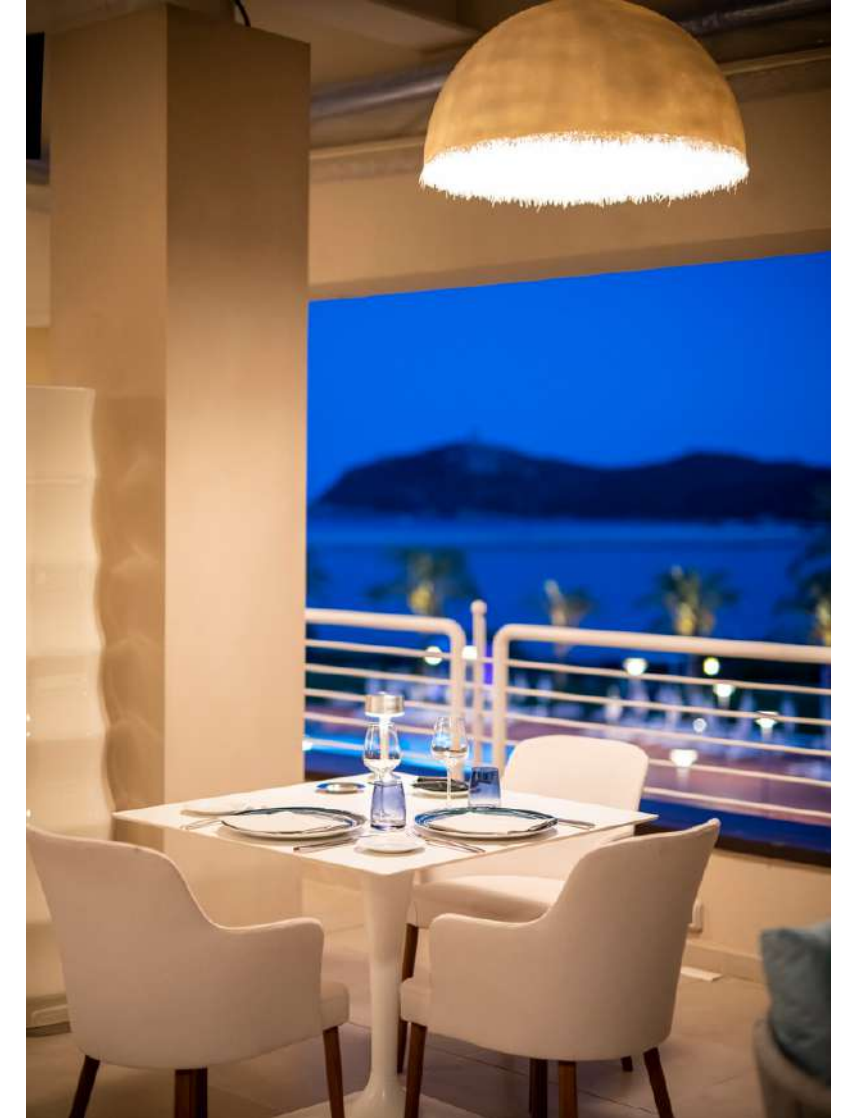
Fine and elegant gourmet restaurant for sit-down or buffet dinners. Located on the hotel rooftop, Su Tea boasts a breathtaking view of Porto Giunco Bay.

The restaurant features an open layout, but can be sealed in case of bad weather.

Conveniently located next to Carbonara and Abatax meeting rooms, the restaurant dining area can also be used for coffee breaks or exhibitions.

 Up to 70 guests

 Up to 200 guests



RESTAURANTS: SU TEA



BARS: MOV'ITA

The Mov'ita Pool Bar is the perfect place to relax and unwind after a long day of meetings or team-building activities.

It offers a wide selection of cocktails and premium spirits to enjoy in a fun and lively atmosphere.

Ideal choice for sunset aperitifs and open bar with musical entertainment or DJ set after dinner.



 Up to 600 guests



BARS: MOV'ITA



BARS: CHIRINGUITO BEACH HOUSE

Gourmet street food, tailor-made cocktails and DJ sets until 1 a.m. This is the recipe for fun at the Chiringuito Beach House.

Perfect location for casual events. Conveniently located in close proximity to the beach, this venue allows for a delightful combination of dining and recreation in a relaxed setting.

 Up to 100 guests

 Up to 300 guests



BARS: CHIRINGUITO BEACH HOUSE



Pullman Almar Timi Ama. The place to meet.. and play



OTHER LOCATIONS FOR EVENTS: ROOFTOP TERRACE

From up here there is the most extraordinary view - on one side, a stunning display of mountains, and on the other, a mesmerizing sight of the pool, lagoon, and bay in the distance.

Alongside Su Tea Restaurant, this expansive 1,000 sq m rooftop terrace provides the perfect venue for sophisticated sit-down or buffet-style gala dinners.



Up to 400 guests



Up to 600 guests



OTHER LOCATIONS FOR EVENTS: ROOFTOP TERRACE



Pullman Almar Timi Ama. The place to meet.. and play



OTHER LOCATIONS FOR EVENTS: POOLSIDE LAWN

The vast lawn area situated between the picturesque lagoon filled with pink flamingos and the brightly lit pool offers a charming atmosphere for dinner shows and gala evenings.

A spectacular fireworks finale will add an extra layer of magic to the already enchanting setting!



 Up to 400 guests

 Up to 600 guests



OTHER LOCATIONS FOR EVENTS: POOLSIDE LAWN



A wide-angle landscape photograph showing a coastal town with a marina filled with sailboats, surrounded by green mountains under a bright blue sky with scattered white clouds. In the foreground, two people wearing helmets are riding red ATVs on a dirt path, looking out towards the town and sea. The text 'team building & leisure activities' is overlaid in white on a semi-transparent dark band across the middle of the image.

team building &
leisure activities

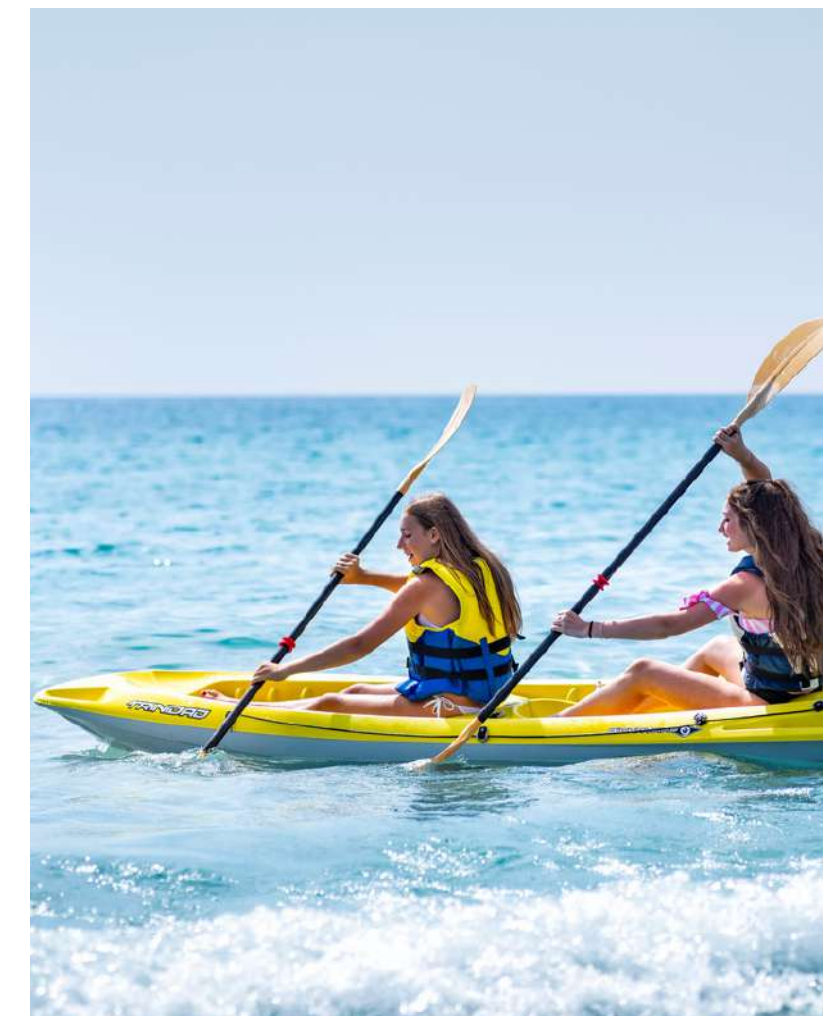
TEAM BUILDING ACTIVITIES

The southeast tip of Sardinia offers myriad ways to build bonds between colleagues.

In collaboration with industry professionals, we are able to organize unforgettable team building activities.

- Sailing regattas
- Team games
- Treasure hunts
- Sports tournaments
- Cooking classes / contests
- Excursions

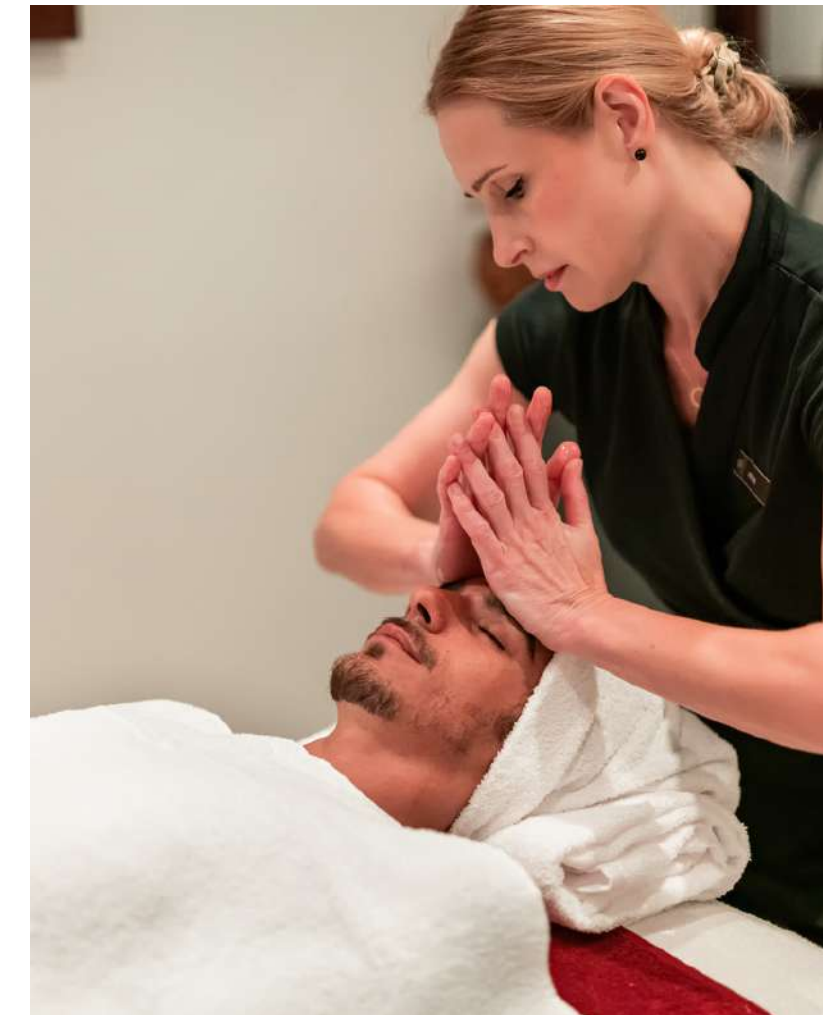
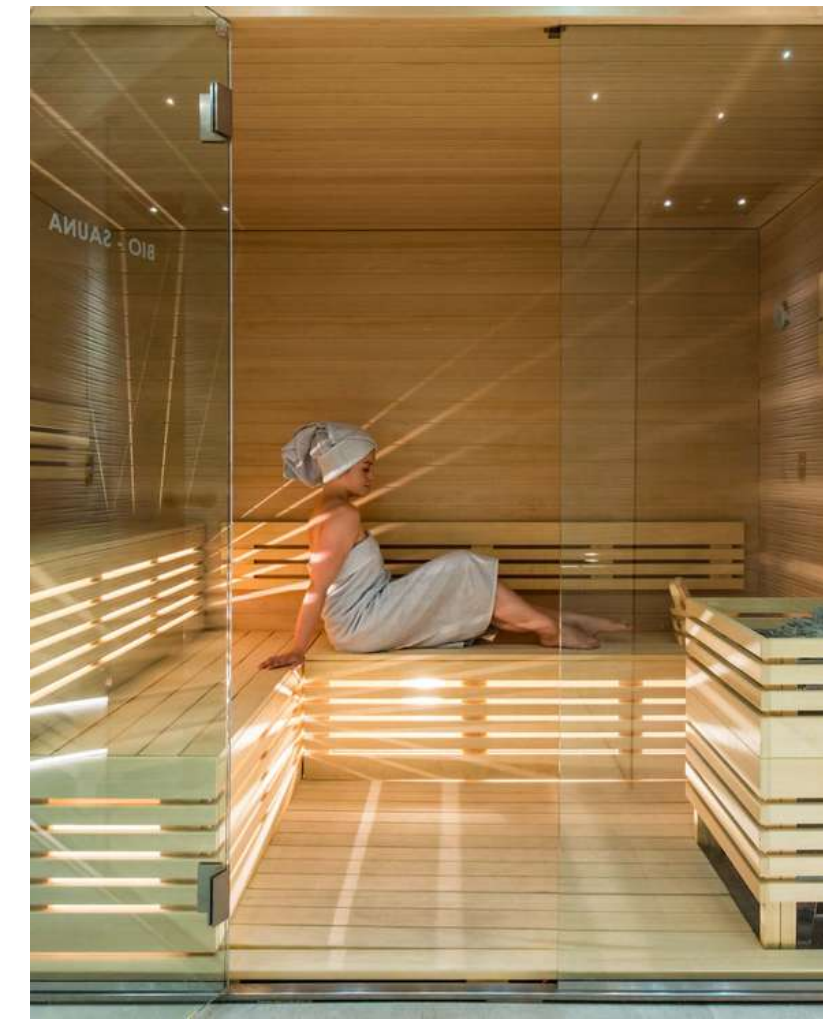
...And many others on request!



EXPERIENCES OF WELL-BEING: SEAWATER SPA

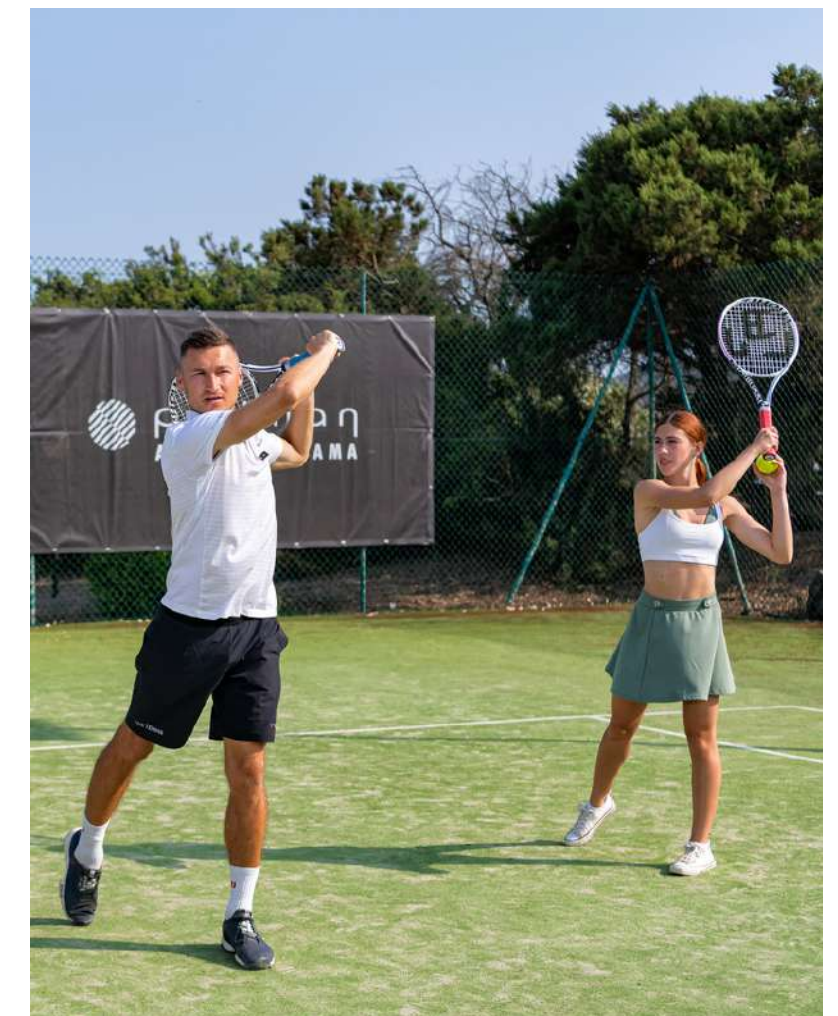
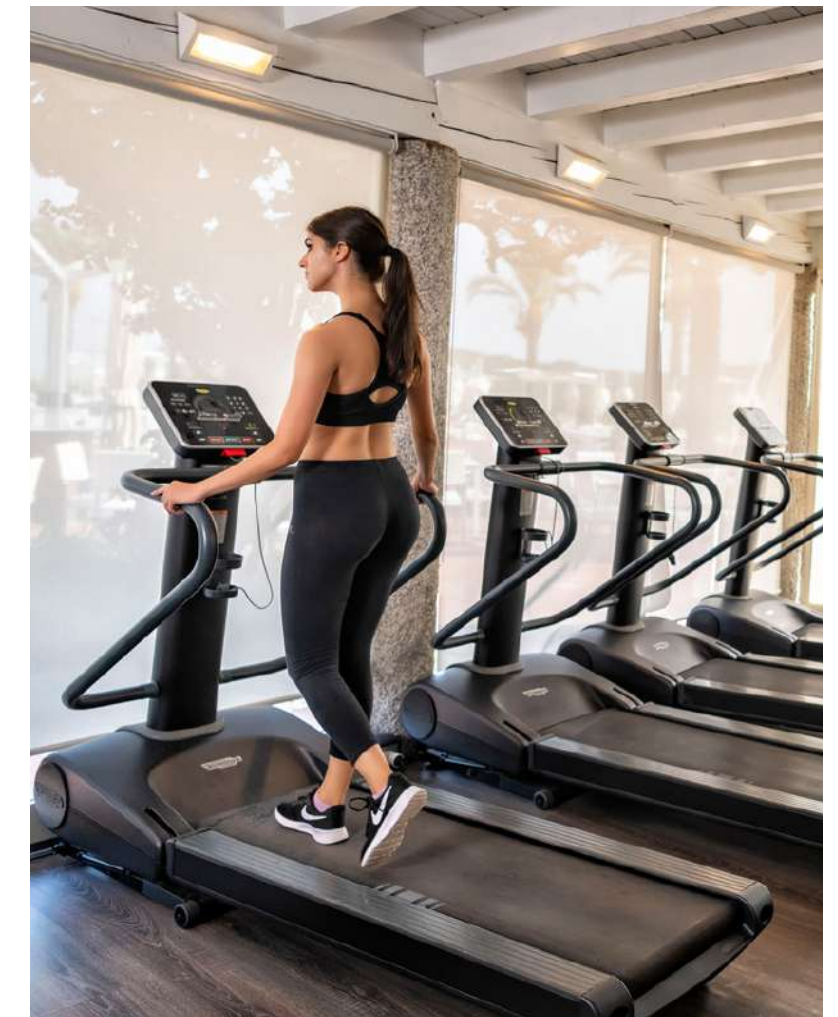
A bubble of serenity located at the heart of the hotel, the Timi Ama Seawater Spa offers not only relaxing and rejuvenating seawater treatments, but also a wide range of beauty treatments and massages

- SENSORY WELLNESS AREA (120 min): 60 sq m heated seawater pool with targeted jets, steam bath, bio-sauna, ice fountain, aromatic showers, salt room, emotional relaxing room, herbal tea lounge
- SEAWATER SPA TREATMENTS AND ALGOTHERAPY
- MASSAGES, FACE AND BODY TREATMENTS
- COSMETIC BRANDS: Cinq Mondes, Almablu, Fitomediterranea
- HAIR SPA: beauty treatments for the hair



TIME OFF IS ON: LEISURE ACTIVITIES

- PRIVATE BEACH: 500 m away, reachable by land electric train, sandy, gently sloping sea access, equipped with sun loungers and umbrellas, beach towels provided (first two rows with extra charge)
- OUTDOOR POOL: 800 sq m, unheated, solarium equipped with sun loungers and umbrellas, beach towels provided
- FREE SPORTS: boules, table tennis, tennis, soccer, muscle awakening, aqua gym, beach volleyball, Pilates, etc.
- FIT LOUNGE: modern fitness room equipped with weights, isotonic machines and cardio machines
- FIT TRAIL: 1.2 km trail with 18 fitness stations for outdoor training
- EVENING ENTERTAINMENT: shows, live music, Sardinian folklore...





our commitment to
sustainability

OUR COMMITMENT TO SUSTAINABILITY



- We train staff on eco-friendly behavior specific to their jobs
- We've instituted a staff committee on 'Health, Safety and Well-Being'
- We've implemented collective planning for work schedules



- By default, we reuse sheets for stays longer than one night
- We encourage guests to reuse sheets
- We use eco-certified cleaning products
- We offer ecological products
- We reduce the amount of paper used for printing
- We offer a charging station for electric cars
- We offer eco-friendly transport services



- We participate in an Onlus programme
- We put fundraising operations in place
- We are committed to eliminating disposable plastic in all rooms, restaurants and bars



- We ban the use of overfished species
- We grow a vegetable garden
- We use food products from local suppliers and/or short supply chains
- We offer food products with third-party labels (organic, fair trade, etc.)
- We recycle food waste
- We offer vegetarian catering



- We measure water and energy consumptions on a monthly basis
- We water our gardens with regenerated water
- We use energy-efficient light bulbs
- We sort our hazardous waste and have it processed in appropriate waste streams
- We collect and reuse rain water



STAY IN TOUCH: HOTEL CONTACTS

Laura Peddis - Events Manager

Pullman Almar Timi Ama Resort & Spa 5*

Viale dei Ginepri, 3 – 09049 – Villasimius (SU) – Sardinia, Italy

Tel. +39 070 79 79 7001 – H3040-CG@accor.com

pullman-timiama-sardegna.com

Download our App

PULLMAN ALMAR TIMI AMA

All our services just a click away!





World's Leading Island Resort



Europe's Leading Hotel & Spa



Europe's Leading Family & Wellness Resort



Pullman Almar Timi Ama Resort & Spa 5* - Viale dei Ginepri 3 - Villasimius, Sardinia

T. +39 070 79791 | H3040@accor.com | pullman-timiama-sardegna.com