

SOFITEL

PRESS KIT

SOFITEL
MUNICH
BAYERPOST



SOFITEL
HOTELS & RESORTS

MUNICH BAYERPOST

SOFITEL MUNICH BAYERPOST

SITUATED AT THE HEART OF BAVARIA'S STATE CAPITAL MUNICH, AND WITH THE MAIN STATION AND PEDESTRIAN AREA JUST A FEW MINUTES AWAY, THE SOFITEL MUNICH BAYERPOST PROVIDES THE PERFECT BASE FROM WHICH TO EXPLORE THIS FASCINATING CITY ON FOOT OR SIMPLY ENJOY AN INDULGENT SHOPPING SPREE.

“Live the french way”, the motto of the Sofitel Hotels and Resorts brand, is very much in evidence here and is embraced by all members of the hotel staff.



THE ART OF FRENCH-STYLE LIVING IN THE HEART OF MUNICH

THE “KÖNIGLICHE-BAYERISCHE POST” - THE ROYAL BAVARIAN POST OFFICE - ONCE OCCUPIED THIS MAGNIFICENT LATE 19TH CENTURY BUILDING IN THE HEART OF MUNICH. TODAY ITS HISTORIC ROOMS HOUSE THE LUXURY HOTEL SOFITEL MUNICH BAYERPOST, OFFERING A UNIQUE COMBINATION OF TRADITIONAL AND MODERN ARCHITECTURE.

Opened in August 2004, this flagship five-star luxury hotel in Munich features distinctive avant-garde architecture and exclusive modern design. Entering the hotel by a former side entrance of the royal Bavarian post office, guests find themselves in a modern building, furnished and decorated in contemporary style.



THE ART OF FRENCH-STYLE LIVING IN THE HEART OF MUNICH

UNTIL 1993 THIS FINE ITALIAN HIGH RENAISSANCE-STYLE BUILDING, NOW A LISTED MONUMENT, WAS OCCUPIED BY THE BAVARIAN STATE POST OFFICE. MUNICH ARCHITECTS FRED ANGERER AND GERALD HADLER COMPLETELY GUTTED THE BUILDING AND RECREATED THE ORIGINAL CONCEPT OF OPEN SPACE AND HIGH CEILINGS.

The north wing was replaced by an impressive new building which now houses around half of the 339 rooms and 57 suites, its top floor offering stunning views over the Alps. Designer Harald Klein from klein Associates KG was commissioned to design the interior décor of the rooms.

As part of extensive renovation work carried out in 2012 and 2013, the 47 junior and Maisonette Suites at the Sofitel Munich Bayerpost underwent complete refurbishment.

In the period from 2015 to 2017 all standard rooms were also extensively renovated and furnished with two new design concepts. The „Salon Bohème“ characterises a symbiosis of retrospective and modernity; the „Salon Littérature“ is an inspiration of poetry and prose.



LOBBY

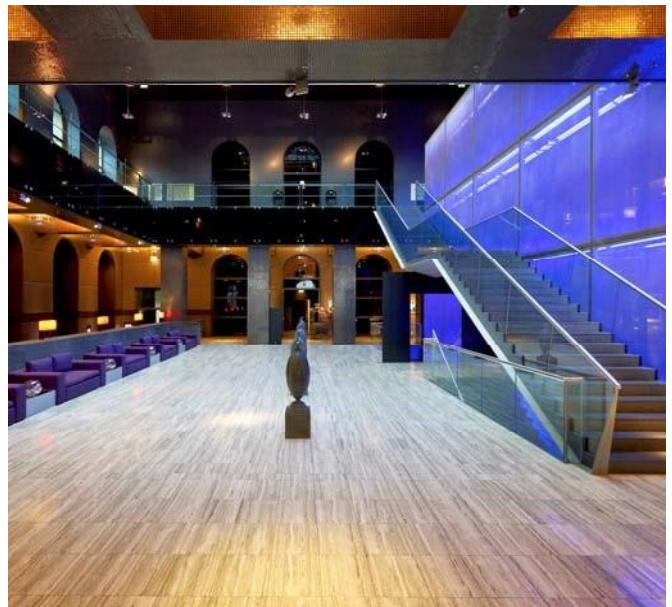
AN ORANGE, ILLUMINATED GLASS STRUCTURE IN THE ROOF LINING LENDS A WARM ALPINE GLOW TO THE LOBBY OF THE SOFITEL MUNICH BAYERPOST.

An attractive combination of high-quality natural materials such as stone, precious woods and leather and lacquered, glass and chrome surfaces gives this part of the hotel a stylish, elegant feel.

The focal point of the building is the 27metre high foyer connecting the lobby to the rear of the building.

A unique lighting concept bathes the foyer area in different colours to create a variety of moods and ambiances.

This attractive space is regularly used to show work by well-known artists from all over the world, as well as local painters and photographers. Guests can enjoy a changing programme of temporary exhibitions by internationally-renowned galleries, such as the Paris POLKA and Munichs' own gallery Andreas Binder.



ROOMS AND SUITES

ALL 339 ROOMS AND 57 SUITES OFFER A HIGH LEVEL OF COMFORT AND CONTEMPORARY DESIGN PLUS ALL MODERN AMENITIES, INCLUDING FREE WIFI ACCESS, A STATE-OF-THE-ART FLAT SCREEN TV, BOSE WAVE SOUND SYSTEM, A NESPRESSO COFFEE MACHINE AND A COMPLIMENTARY BOTTLE OF EVIAN WATER (0,5L).

All rooms in the hotel have a tastefully integrated natural stone bathroom completed with a range of Hermès care products for guests to enjoy during their stay.

The Maisonette Suites on the top floor offer stunning views across the rooftops of Munich or beyond to the Bavarian Alps.

From 2015 until 2017 all 339 rooms were extensively renovated in close collaboration with the interior designers klein Associates KG and furnished with two new design concepts.

The classic and luxury rooms are a modern interpretation of bohemian attitude in Munich's 1920's. The colorful modern design of the "Salon Bohème" resembles the love of live with an enticing mixture of leather, brass and glass and the subtle comfort such as the eye-catching large armchair.

The "Salon Littérature" gives time to relax in a harmonic atmosphere. Inspired by poetry and prose one can enjoy the warm cocoon of a library and round off the day in the cozy rocking chair.



SUITES

2009 SAW THE START OF A NEW CHAPTER IN THE SOFITEL'S SUCCESS STORY WITH THE COMPLETE RENOVATION OF ITS TEN LARGEST SUITES. THE WORK SET A NEW BENCHMARK IN HOTEL DESIGN.

The Opera suites are an extraordinary experience on 90 sqm: individually themed suites with original decor and spacious living area.

The Opera Suite "Naturelle" offers a contemporary twist on the traditional south German alpine hut.

Decorated using materials and colours inspired by the lavish opulence of the Orient, the "Sheherazade" suite transports guests right back to the stories of 1001 Arabian Nights.

And for a taste of the artist's life, guests can enjoy a stay in the "Atelier", a charming suite designed to recreate a naturally lit artist's studio. This bright, open-plan room is the perfect place to generate ideas and feel inspired.

In the Opera Suite "Les Fleurs du Mal" guests enter a whimsical fantasy world inspired by the eponymous book by the French writer and philosopher Charles Baudelaire.



SUITES

HARALD KLEIN DESIGNED EACH OF THE SUITES ON A PARTICULAR THEME AND HIS CAREFUL CHOICE OF COLOURS, MATERIALS, FURNISHINGS, ARTWORK AND DECORATIVE OBJECTS INVESTS EACH ROOM WITH ITS OWN UNIQUE AND DISTINCTIVE AMBIENCE. EVERY SUITE TELLS ITS OWN STORY AND INSPIRES THE IMAGINATION OF THE GUESTS WHO STAY THERE.

Each of the four Prestige Suites extends over two floors, occupying an area of 56 sqm, and allows an option of connecting with two Superior rooms as Family Suite accommodation. These delightful loft suites have a fresh, modern décor and a trendy retro feeling.

THE IMPERIAL SUITE “PEARL”, MEASURING 90 SQM, WAS CONCEIVED AS A HOMAGE TO THE SYMBOL OF LUXURY AND GLAMOUR – THE PEARL.

With a predominantly gold, white and grey colour-scheme throughout, the suite’s many delightful touches include the gold-coloured carpet, an undulating, illuminated wall and two golden globe luminaries, shaped like hydrangea leaves.



SUITES MAGNIFICENT APARTMENT

THIS WONDERFUL SUITE, AT 175 SQM THE LARGEST AT THE SOFITEL MUNICH BAYERPOST, THE “OYSTER”, HIDDEN AWAY LIKE THE PRECIOUS OYSTER IN ITS PROTECTIVE SHELL, OFFERS GUESTS PURE, UNADULTERATED LUXURY.

Decorated using high-quality materials and with exclusive furniture by top designers and the latest Bang & Olufsson equipment, guests will want for nothing during their stay.

A highlight of the interior is the media wall with two 85” flat screen TVs allowing guests to enjoy TV programmes and/or view their own images. The colour scheme is purple, white, grey and burgundy and the high-quality materials used throughout include natural stone, white leather, coloured glass and a dining table made of white Corian. The floor, the end walls and six metre-high ceiling are finished in purple to give the effect of being inside of an oyster shell. Decorative objects, such as real oyster shells on the dining table, continue the marine theme.

Guests also have use of their own kitchenette and private dressing room. The dining table can seat up to twelve people, making it ideal for private dinners in an intimate setting.

The suite’s accommodation can be supplemented by the addition of an adjoining standard room - accessed via a connecting door - making it an ideal option for families.

To round off a busy day, guests can enjoy the sumptuous pleasure of relaxing in their own Jacuzzi and steam bath.



CULINARY OFFERINGS

MUNICH-BORN ANDREAS DONNERBAUER IS THE EXECUTIVE CHEF OF THE SOFITEL MUNICH BAYERPOST AND IS RESPONSIBLE, AMONGST OTHER THINGS, FOR THE “DÉLICE LA BRASSERIE”, THE BREAKFAST RESTAURANT “SCHWARZ & WEIZ” AND THE “ISARBAR”.

With over 20 years of cooking experience on three continents, he has taken on the task of taking guests of the Sofitel on a culinary journey through the finest cuisines in the world. Depending on the season, he reinvents international cuisine to include regional specialities.

Guests can enjoy the extensive breakfast buffet in the “Schwarz & Weiz”, pamper themselves with modern French brasserie cuisine at the „DÉLICE La Braserie”, and round off the evening with the in-house cocktail creations of the “ISARBAR”.

Restaurant “Schwarz & Weiz” welcomes you in a sophisticated atmosphere with a sumptuous breakfast buffet.

Upon request it also serves as an exclusive, private event location in the evening.



DÉLICE LA BRASSERIE

TREAT YOURSELF TO MODERN FRENCH CUISINE IN A RELAXED AND CASUAL SETTING. EXPERIENCE A PERFECT COMBINATION OF CULINARY SIMPLICITY, FRENCH ELEGANCE AND THE WELCOMING EASE OF A BRASSERIE ATMOSPHERE.

Urban chic with lofty ceilings, the Vinothek or the inviting terrace offer the perfect ambience for this creative, brasserie cuisine.

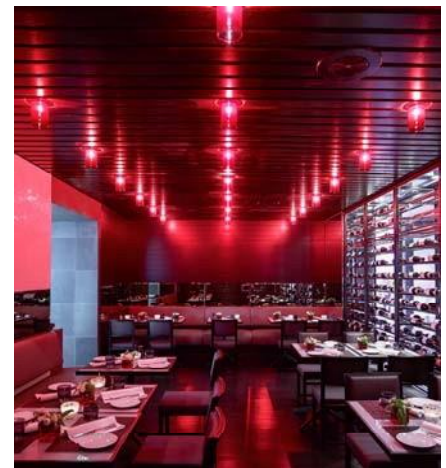
Executive Chef Andreas Donnerbauer and Junior Sous Chef Tom Tschierschke inspire with their classic French delicacies featuring a charming, culinary creativity.

Enjoy a harmonious combination of top-quality regional and seasonal ingredients, which resemble the Parisian sensations on a plate.

We invite you to enjoy culinary highlights when serving classical brasserie dishes with a contemporary touch. The focus of the modern French delicacies is on the essential flavours; refined spices and typical preparation techniques accentuate the selected products. These are accompanied by an exquisite range of fine international wines.

Complemented by the "DÉLiCE rôtisserie" dishes, Boeuf Bourguignon or Charolais fillet steak round off the diverse culinary selection. In our own dry-aging cabinet the meat develops its inimitable flavour.

The interior of the DÉLiCE La Brasserie is characterised by its modern and harmonious details. Its sophisticated architecture memorialises a typical Parisian brasserie, with traditional elements such as patterned wallpaper, wall lights, suspended lamps and black tiles with floral Art Nouveau designs.



ISARBAR

RELAXING IN THE „ISARBAR“ – WHAT BETTER WAY TO FINISH THE DAY?

After a busy day working or sightseeing in Munich, relax in the hotels ISArBAR. The elegant Munich bar, lounge terrace and library offers a perfect upscale setting for meeting business colleagues or family and friends.

The hotel bar, named after the Isar River which flows into Munich from the Alps, envelops guests in a refined setting of rich green silk, pure wood and real leather.

Gold-coloured tiles, tempting cocktails and a relaxed atmosphere are what make the ISARBAR a great place to spend time. Guests can choose from a range of international cocktail classics with a new twist, finest champagne, wines and spirits and can enjoy these either at the bar, in the lounge or library or even outside on the lounge terrace.



SPA FACILITIES

THE SOFITEL SPA AT THE SOFITEL MUNICH BAYERPOST COMBINES THE BEST SPA TREATMENTS FROM ALL OVER THE WORLD WITH THE SKILLS AND TECHNIQUES OF MODERN FRENCH COSMETOLOGY TO BRING GUESTS THE ULTIMATE STIMULATING AND REJUVENATING SPA EXPERIENCE.

The 570 sqm SOFITEL SPA comprises a fitness studio with all the latest Technogym equipment, a spiral-shaped swimming pool with counter-current flow, a sauna, steam bath and deep relaxation room.

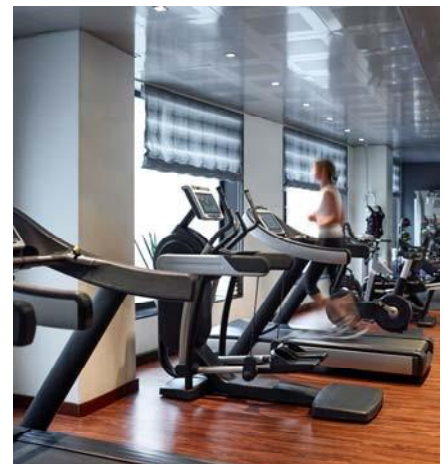
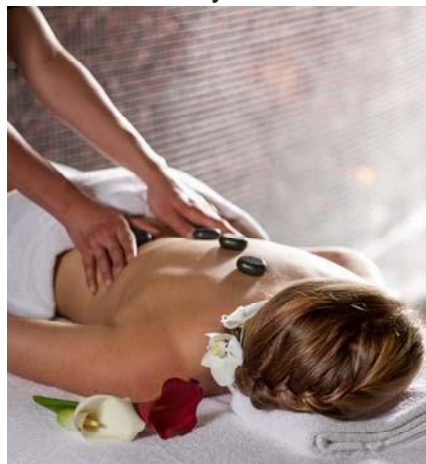
The Cinq Mondes (Five Worlds) spa philosophy combines the very best in French refinement and inspiration with the finest health and beauty treatments from around the world. The spa also offers the Sothy skincare range from Paris.

To enhance the spa experience, we pamper our guests with a menu of treatments everything from short, refreshing 'starters' (30 minutes) and indulgent 'main courses' (60 or 90 minutes) to invigorating 'desserts' (30 or 60 minutes).

WORK OUT IN A STATE-OF-THE-ART HOTEL GYM, WHERE FITNESS IS TAKEN SERIOUSLY.

Get to know your limits with a Cardio Pulmonary Exercise Testing (CPET) – challenge them with a personalized training program, developed by experienced fitness coaches.

The SOFITEL FIT gym is open 24h hours daily.

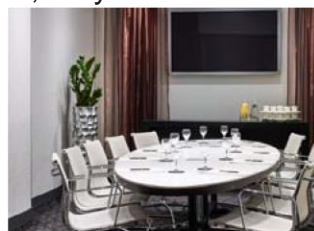


MEETINGS & EVENTS

WITH 20 MEETING ROOMS COVERING AN AREA OF 1,800 SQM AND STATE-OF-THE-ART CONFERENCE TECHNOLOGY, THE SOFITEL MUNICH BAYERPOST PROVIDES EXCELLENT FACILITIES FOR CONFERENCE EVENTS OF ANY KIND.

At 923 sqm the “Nyphenburg” ballroom is the largest pillar-less event venue in the centre of Munich and can accommodate up to 800 people. A hydraulic stage and sophisticated light and sound facilities guarantee the very best conditions for any event. The spacious foyer area, spanned by a 27-metre glass roof, is used for receptions and exhibitions. A stunning light installation, with 44 different colour sequences, creates stunning visual effects on the stairs leading to the gallery.

Two Board Meeting Rooms on the 5th floor provide the ideal setting for confidential, smallgroup meetings. These soundproof rooms, each measuring approx. 80 sqm, are lit by natural daylight and can each seat up to 20 people. Boardroom A has a fixed conference table with comfortable executive chairs; Boardroom B offers a choice of seating options. The adjoining 150 sqm Business Lounge provides refreshment facilities for conference delegates. Magnifique Meetings Concierges, the conference experts, are always on hand to provide support for your event. With extensive experience in handling anything from video conferences and effective product presentations with event-appropriate décor, to exhibitions and private celebrations, they will ensure that your event goes without a hitch.



MÜNCHEN AND ITS ENVIRONS

WITH ITS CONVENIENT CENTRAL LOCATION CLOSE TO MUNICH'S MAIN STATION, THE SOFITEL MUNICH BAYERPOST IS THE PERFECT BASE FROM WHICH TO EXPLORE "ITALY'S NORTHERNMOST CITY", AS THE BAVARIAN CAPITAL IS AFFECTIONATELY KNOWN.

Parks, Florentine villas, Roman churches and fine late 19th century buildings abound in Munich and there are countless other wonderful sights to see around this great city – the bustling Viktualienmarkt, the famous Rathaus (town-hall) and the Theatiner and St Peter's Churches are just some of the places well worth visiting.

Munich is also known as Germany's "cultural capital" – and with good reason. Just a short distance from the Sofitel Munich Bayerpost, situated between Königsplatz and the Kunstakademie, are the city's impressive art galleries: the Alte and Neue Pinakothek, the Pinakothek der Moderne, the Lenbachhaus and the Glyptothek. Further attractions for artlovers include the Bayerisches Nationalmuseum, which holds mainly regional art works, and the temporary exhibitions at the Haus der Kunst art museum. Classical music fans will also find plenty to interest them, with new productions at the Bayerische Staatsoper opera house and the Münchener Kammerspiele theatre.

For those who feel the need to escape the busy city, the delightful Englischer Garten, just a stone's throw from the hotel, offers a peaceful refuge. On fine days this is where locals come to soak up the warm sunshine and enjoy the wide open spaces of one of the world's largest inner-city parks. Alternatively, a trip to the region's romantic lakes - the Tegernsee and the Starnberger See can be reached by car in under an hour - is always a real treat.



CONTACTS

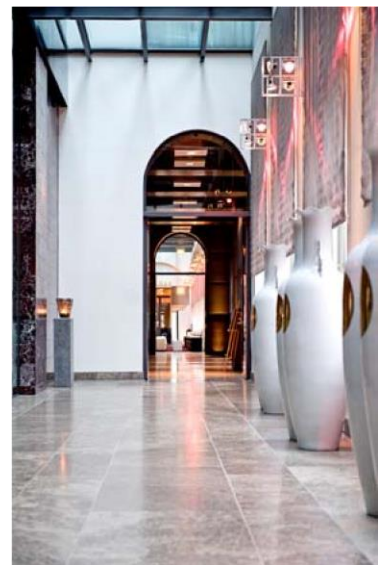
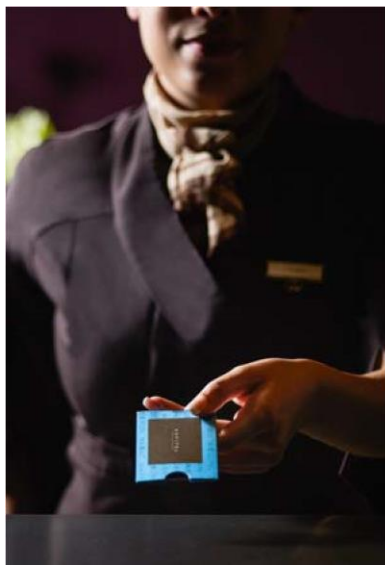
SOFITEL MUNICH BAYERPOST

Sofitel Munich Bayerpost
Bayerstrasse 12
80335 Munich, Germany

Eva Schömann
T +49 89 59948 2500
eva.schoemann@sofitel.com

ACCORHOTELS CENTRAL EUROPE CORPORATE COMMUNICATIONS & SOCIAL RESPONSIBILITY

Tamara Schwarz-Speckbacher
T +49 (0)162 4118113
[tamara.schwarz-speckbach @accor.com](mailto:tamara.schwarz-speckbach@accor.com)



SOFITEL
HOTELS & RESORTS