

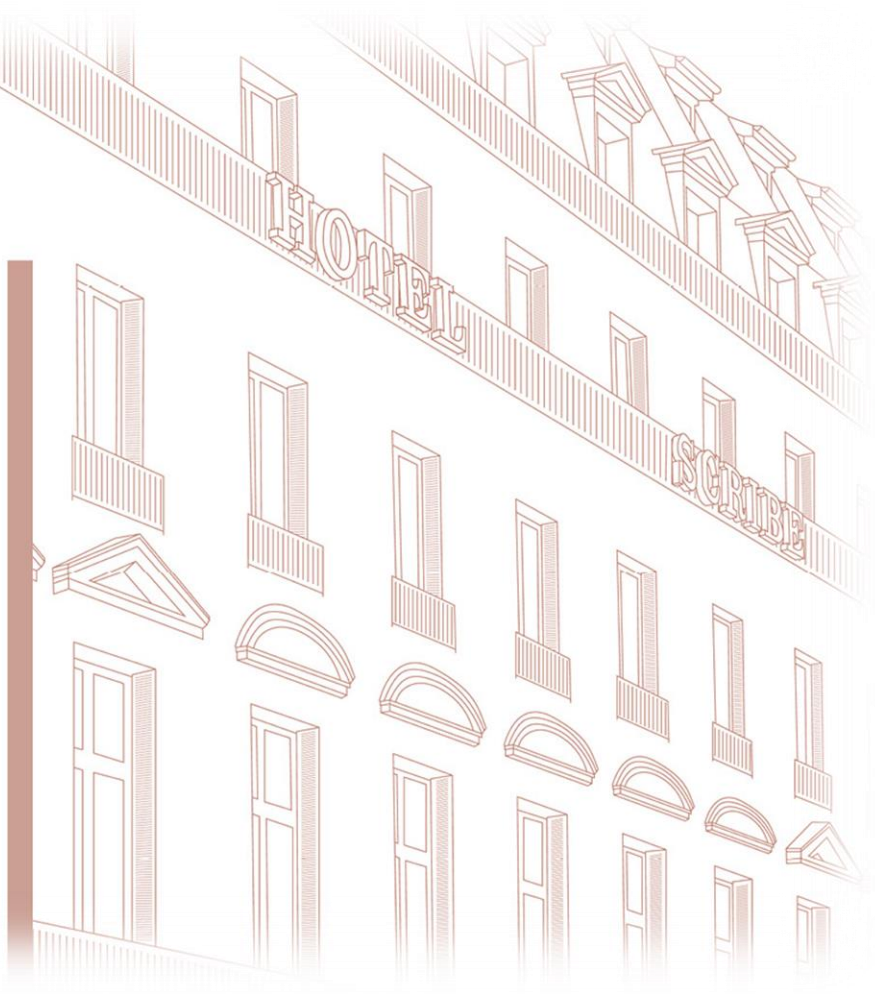


# LE SCRIBE

MANAGED BY SOFITEL

THERE ARE  
MEETINGS,  
THEN  
THERE ARE  
MAGNIFIQUE  
MEETINGS OF  
MINDS.

ENTER



# LE SCRIBE PARIS OPERA

Let's experience the Parisian lifestyle in this emblematic address within the intimacy of our Haussmann residence. With its club spirit, it is the perfect meeting place for your exclusive events. A collaboration with French designer Tristan Auer



**CONTACT US**



**MAGNIFIQUE MEETINGS**



**ACCOMODATIONS AND FACILITIES**



**FOOD AND DRINK**



**WELLNESS**



**REWARDS SCHEME**



**CAPACITY CHART**

# MAGNIFIQUE MEETINGS

Whether you are organizing a meeting, congress, press conference, gala dinner or a fashion show, our 7 meeting and reception facilities offer a total area of 5630 sq ft. for events up to 200 guests. Our teams are your partners, working with you to ensure the success of your event

1. 1895, A, B

3. AUGUSTE LUMIERE, A, B

2. LOUIS LUMIERE, A, B

4. FOYER



CAPACITY CHART

1895

OVERVIEW

GALLERY

FLOORPLAN

FACILITIES

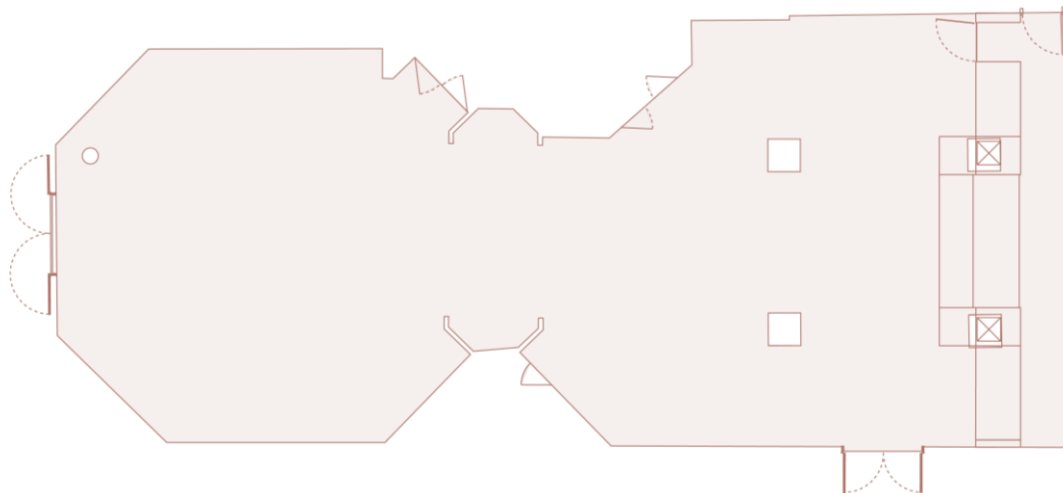
## 1895

Modular space which can be offered in the form of two separated lounges with a capacity of up to 200 guests . This reception room can be arranged according to your needs and at your convenience in a U shape style or for a cocktail celebration/social Events. Welcome to the 1895 the birth place of Cinema!

1895

# FLOORPLAN

General layout



FLOOR PLAN

- General
- Reception
- Theatre
- Cabaret
- Classroom
- Banquet
- Conference
- U-Shape

## SPECIFICATIONS

Capacity: 200

Dimensions: 170m<sup>2</sup>

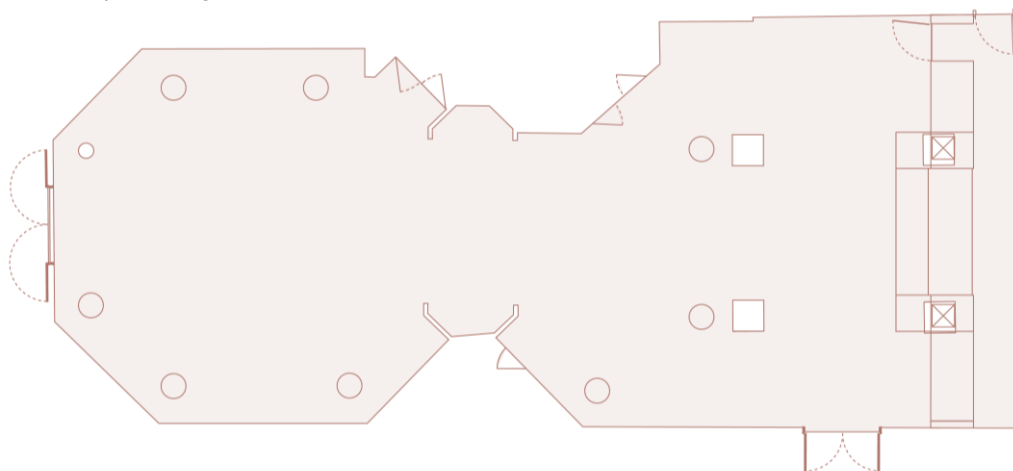


MAIN MENU

1895

# FLOORPLAN

Reception layout



FLOOR PLAN

- General
- Reception
- Theatre
- Cabaret
- Classroom
- Banquet
- Conference
- U-Shape

## SPECIFICATIONS

Capacity: 200

Dimensions: 170m<sup>2</sup>

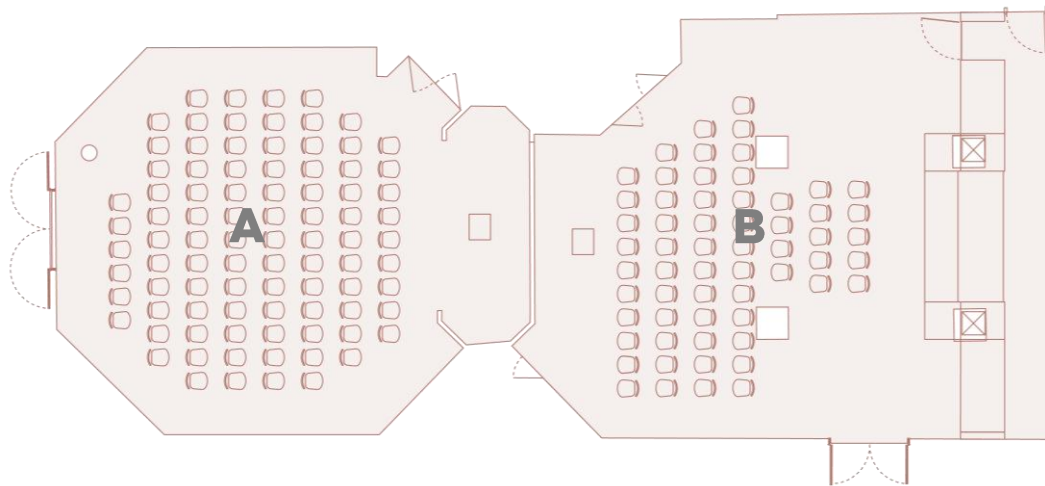


MAIN MENU

1895

# FLOORPLAN

Theatre layout



FLOOR PLAN

- General
- Reception
- Theatre
- Cabaret
- Classroom
- Banquet
- Conference
- U-Shape

## SPECIFICATIONS

Capacity: 149

Dimensions: 170m<sup>2</sup>

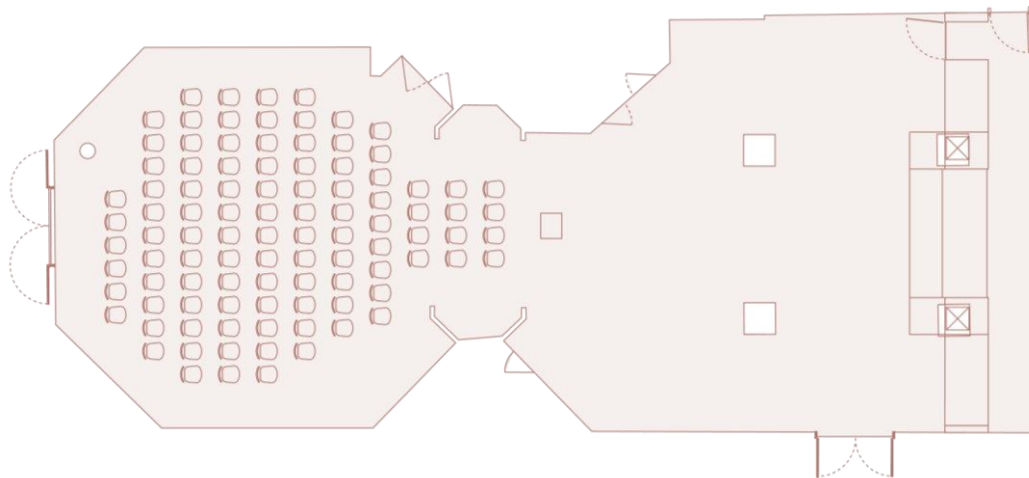


MAIN MENU

1895

# FLOORPLAN

Theatre layout 1895 A



FLOOR PLAN

- General
- Reception
- Theatre
- Cabaret
- Classroom
- Banquet
- Conference
- U-Shape

## SPECIFICATIONS

Capacity: 111

Dimensions: 170m2



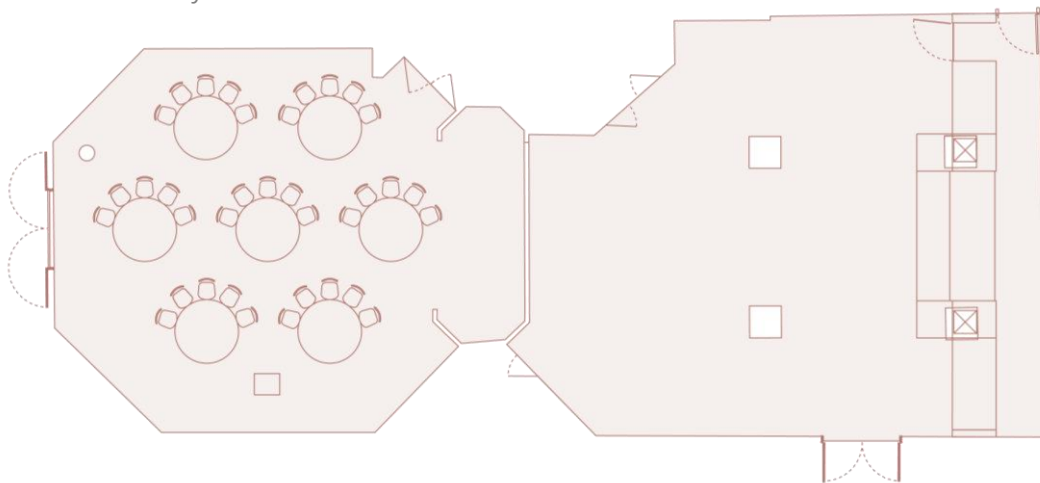
MAIN MENU



1895

# FLOOR PLAN

Cabaret layout



FLOOR PLAN

- General
- Reception
- Theatre
- Cabaret
- Classroom
- Banquet
- Conference
- U-Shape

## SPECIFICATIONS

Capacity: 35

Dimensions: 170m<sup>2</sup>

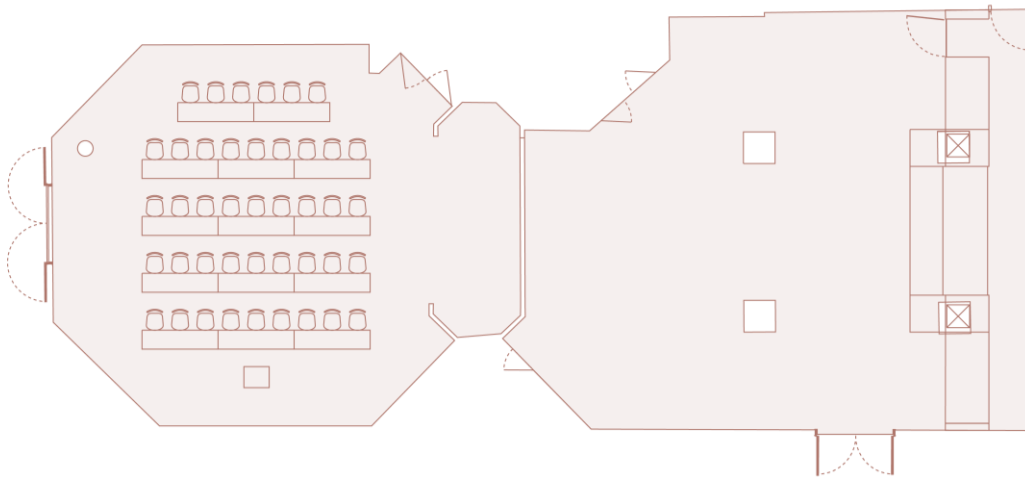


MAIN MENU

1895

# FLOORPLAN

Classroom layout



FLOOR PLAN

- General
- Reception
- Theatre
- Cabaret
- Classroom
- Banquet
- Conference
- U-Shape

## SPECIFICATIONS

Capacity: 42

Dimensions: 170m<sup>2</sup>

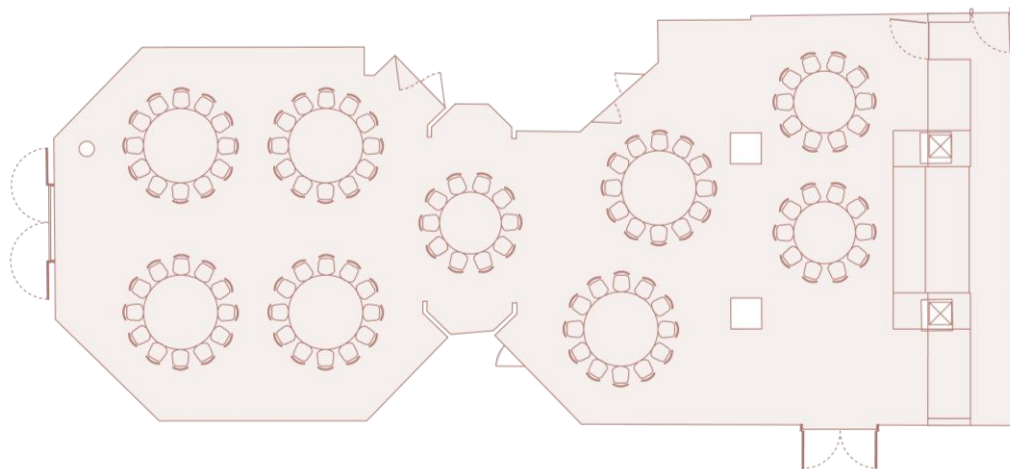


MAIN MENU

1895

# FLOOR PLAN

Banquet layout A + B



FLOOR PLAN

- General
- Reception
- Theatre
- Cabaret
- Classroom
- Banquet
- Conference
- U-Shape

## SPECIFICATIONS

Capacity: 102

Dimensions: 170m<sup>2</sup>

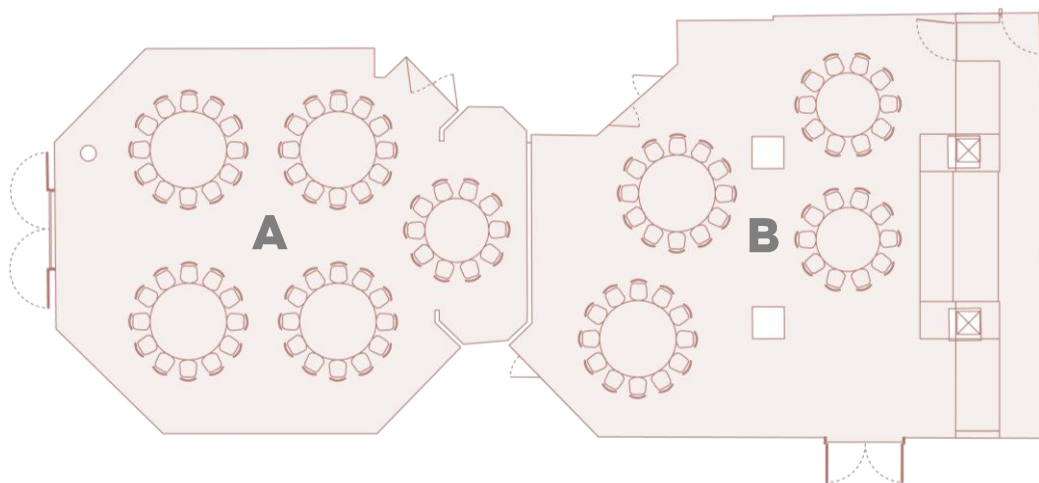


MAIN MENU

1895

# FLOORPLAN

Banquet layout A OR B



FLOOR PLAN

- General
- Reception
- Theatre
- Cabaret
- Classroom
- Banquet
- Conference
- U-Shape

## SPECIFICATIONS

Capacity: 58 / 44

Dimensions: 170m<sup>2</sup>

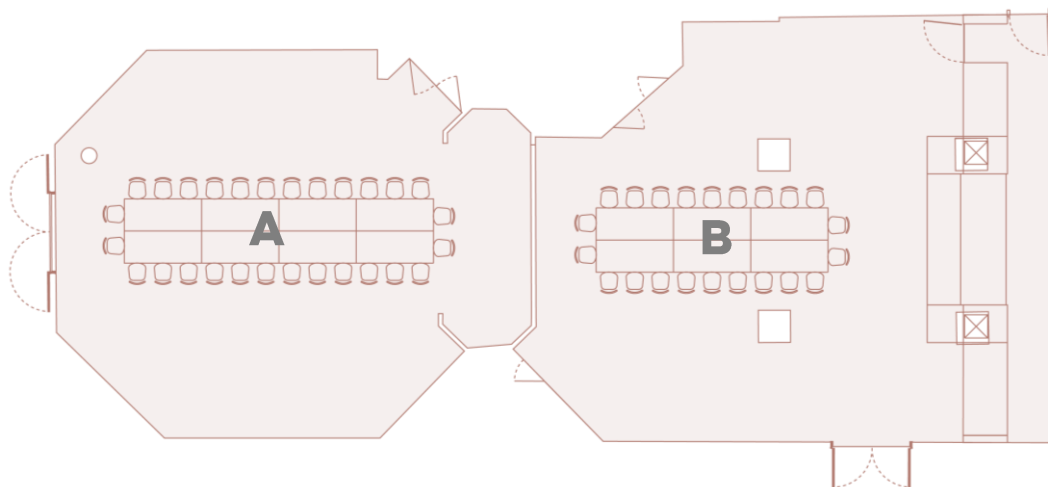


MAIN MENU

1895

# FLOORPLAN

Conference layout A OR B



FLOOR PLAN

- General
- Reception
- Theatre
- Cabaret
- Classroom
- Banquet
- Conference
- U-Shape

## SPECIFICATIONS

Capacity: 28 / 22

Dimensions: 170m<sup>2</sup>

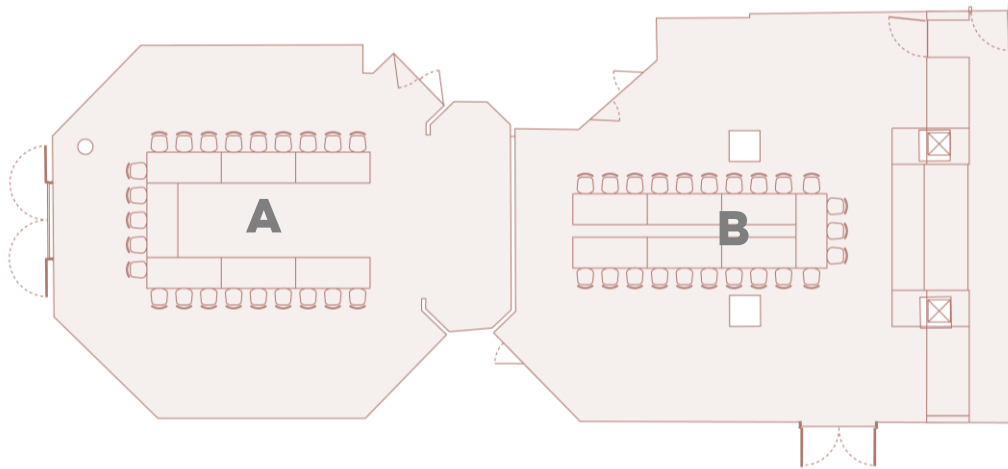


MAIN MENU

1895

# FLOORPLAN

U-Shape layout A OR B



FLOOR PLAN

- General
- Reception
- Theatre
- Cabaret
- Classroom
- Banquet
- Conference
- U-Shape

## SPECIFICATIONS

Capacity: 23 /23

Dimensions: 170m2



MAIN MENU

1895

# AUDIO VISUAL FEATURES

- Screen:-240 X 180
- Video projector (5000 lumens)
- Barco Click & Share
- USB connection for sharing documents ,enable presentations for PowerPoint, Excel, Word and PDF documents, photos on the room display from your computer
- Amplification with 4 Bose enceintes DM2S ( puissance tbc )
- High speed and Wi-fi internet access
- Air conditioning

OVERVIEW

GALLERY

FLOORPLAN

FACILITIES

# AUGUSTE LUMIÈRE

OVERVIEW

GALLERY

FLOORPLAN

FACILITIES

## AUGUSTE LUMIÈRE

The perfect meeting room for your day delegate meeting or for a co-working session.

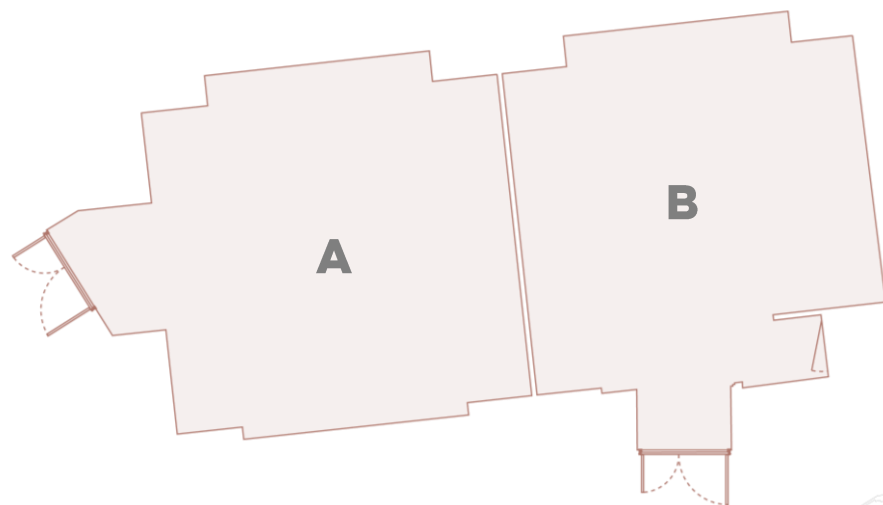
In a Plenary session for up to a 100 delegates in theatre style or 40 guests in cabaret style for a dinner presentation.



# AUGUSTE LUMIERE

## FLOORPLAN

General layout



### SPECIFICATIONS

Capacity: 100

Dimensions: 91m<sup>2</sup>

MAIN MENU

### FLOOR PLAN

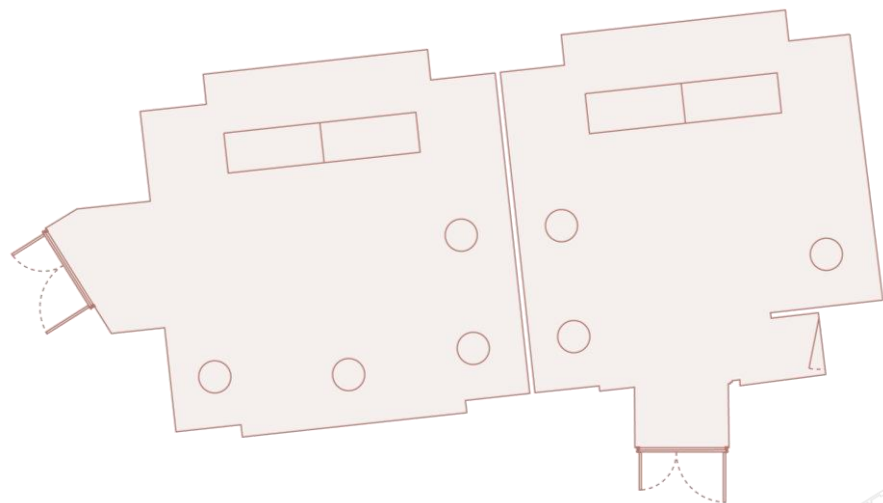
General  
Reception  
Theatre  
Cabaret  
Classroom  
Banquet  
Conference  
U-Shape



# AUGUSTE LUMIERE

## FLOORPLAN

Reception layout



### SPECIFICATIONS

Capacity: 100

Dimensions: 91m<sup>2</sup>

[MAIN MENU](#)

### FLOOR PLAN

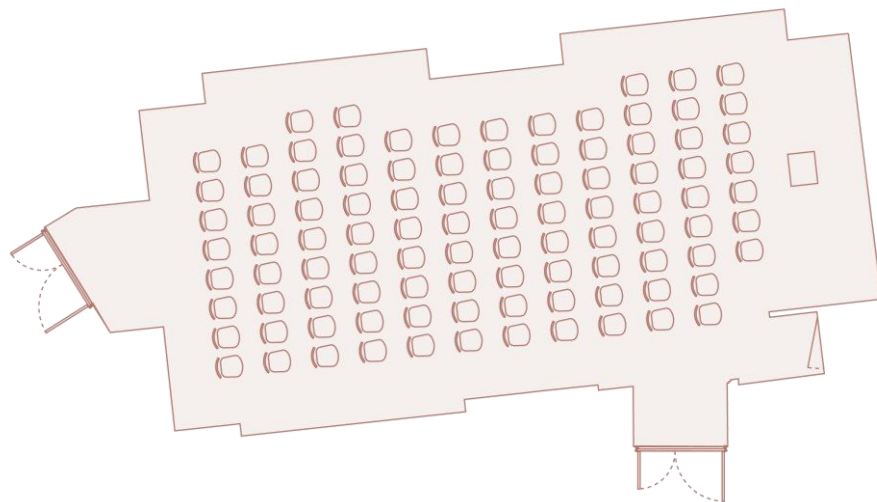
- General
- Reception
- Theatre
- Cabaret
- Classroom
- Banquet
- Conference
- U-Shape



# AUGUSTE LUMIERE

## FLOORPLAN

Theatre layout A + B



### SPECIFICATIONS

Capacity: 100

Dimensions: 91m<sup>2</sup>

[MAIN MENU](#)

### FLOOR PLAN

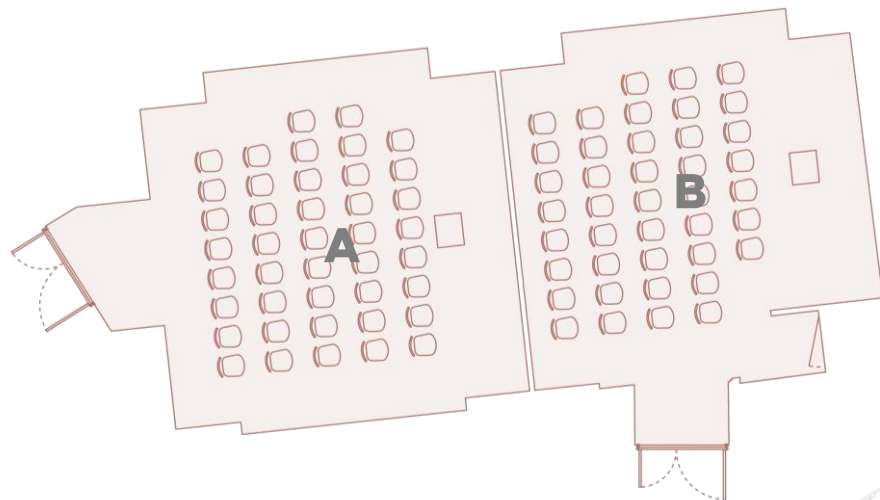
- General
- Reception
- Theatre
- Cabaret
- Classroom
- Banquet
- Conference
- U-Shape



# AUGUSTE LUMIERE

## FLOORPLAN

Theatre layout A OR B



### SPECIFICATIONS

Capacity: 42 / 41

Dimensions: 45.6 / 45.6 m<sup>2</sup>

[MAIN MENU](#)

### FLOOR PLAN

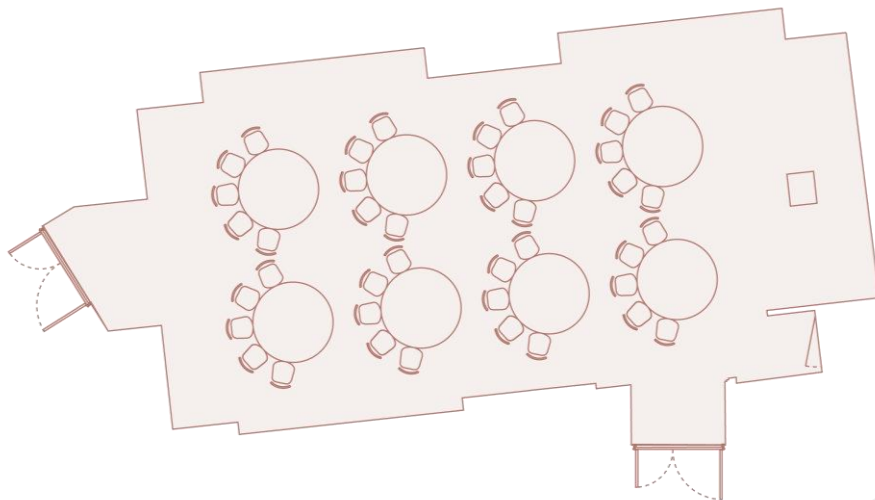
- General
- Reception
- Theatre
- Cabaret
- Classroom
- Banquet
- Conference
- U-Shape



# AUGUSTE LUMIERE

## FLOORPLAN

Cabaret layout A + B



### SPECIFICATIONS

Capacity: 40

Dimensions: 91m<sup>2</sup>

[MAIN MENU](#)

### FLOOR PLAN

- General
- Reception
- Theatre
- Cabaret
- Classroom
- Banquet
- Conference
- U-Shape

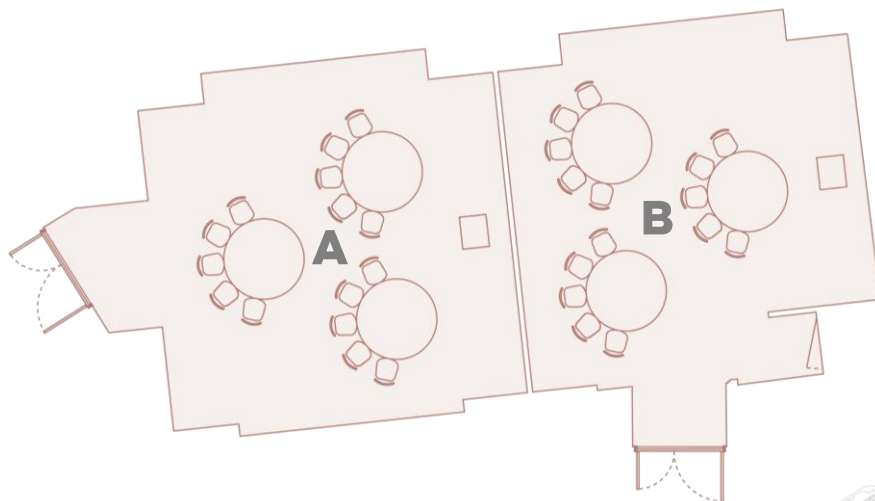


# AUGUSTE LUMIERE

## FLOORPLAN

Cabaret layout A OR B

FLOOR PLAN



- General
- Reception
- Theatre
- Cabaret
- Classroom
- Banquet
- Conference
- U-Shape

### SPECIFICATIONS

Capacity: 15 / 15

Dimensions: 45.6 /45.6 m2

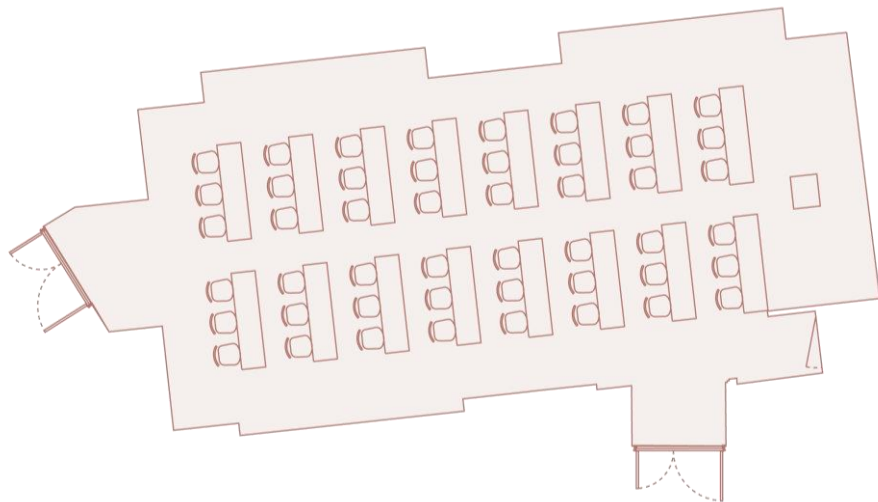


MAIN MENU

# AUGUSTE LUMIERE

## FLOORPLAN

Classroom layout



### SPECIFICATIONS

Capacity: 48

Dimensions: 45.6 /45.6 m2

[MAIN MENU](#)

### FLOOR PLAN

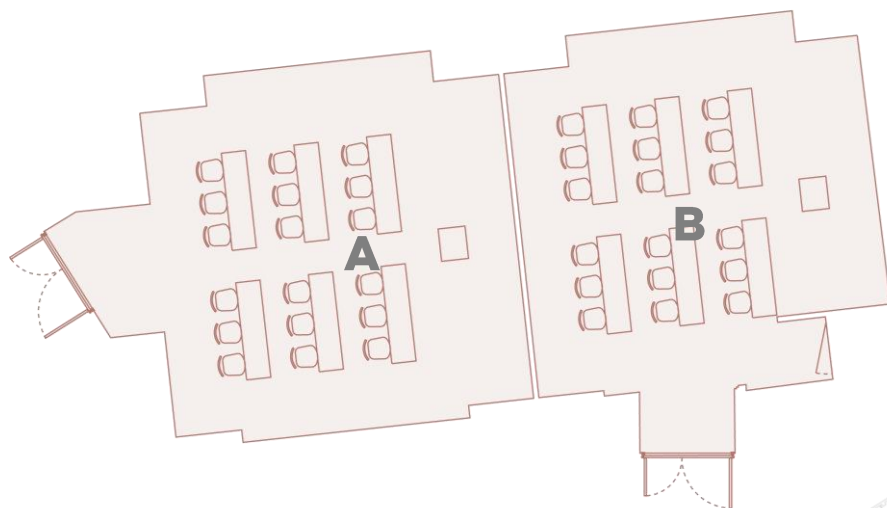
- General
- Reception
- Theatre
- Cabaret
- Classroom
- Banquet
- Conference
- U-Shape



# AUGUSTE LUMIERE

## FLOORPLAN

Classroom layout



### SPECIFICATIONS

Capacity: 18 / 18

Dimensions: 45.6 /45.6 m2

[MAIN MENU](#)

### FLOOR PLAN

- General
- Reception
- Theatre
- Cabaret
- Classroom
- Banquet
- Conference
- U-Shape

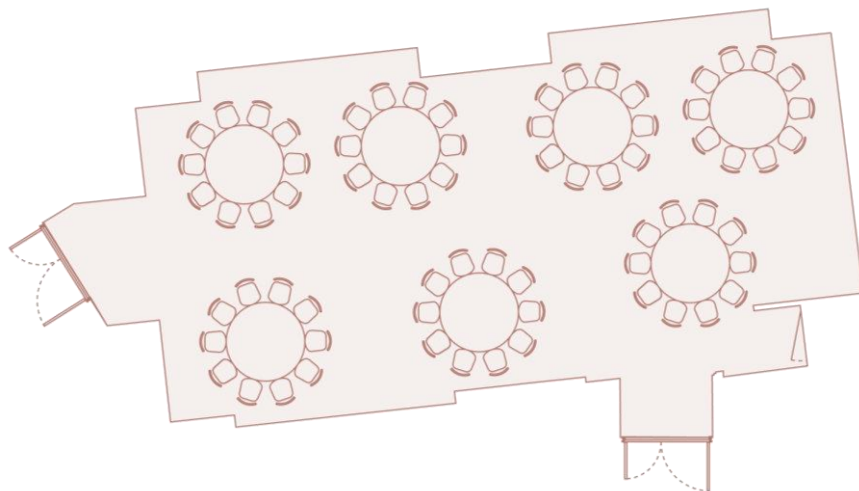




# AUGUSTE LUMIERE

## FLOORPLAN

Banquet Rounds A + B



FLOOR PLAN

- General
- Reception
- Theatre
- Cabaret
- Classroom
- Banquet
- Conference
- U-Shape

### SPECIFICATIONS

Capacity: 70

Dimensions: 91m<sup>2</sup>

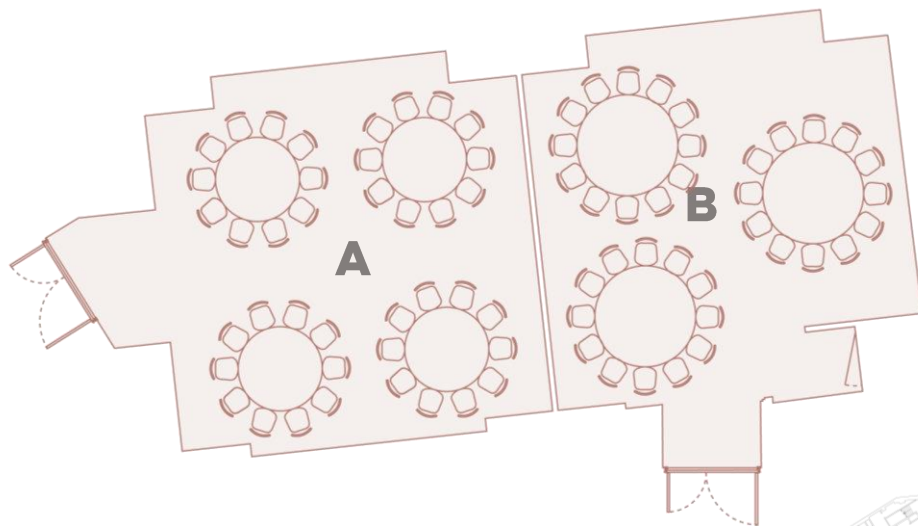
MAIN MENU



# AUGUSTE LUMIERE

## FLOORPLAN

Banquet Rounds A OR B



### SPECIFICATIONS

Capacity: 40 / 30

Dimensions: 45.6 / 45.6 m<sup>2</sup>

MAIN MENU

### FLOOR PLAN

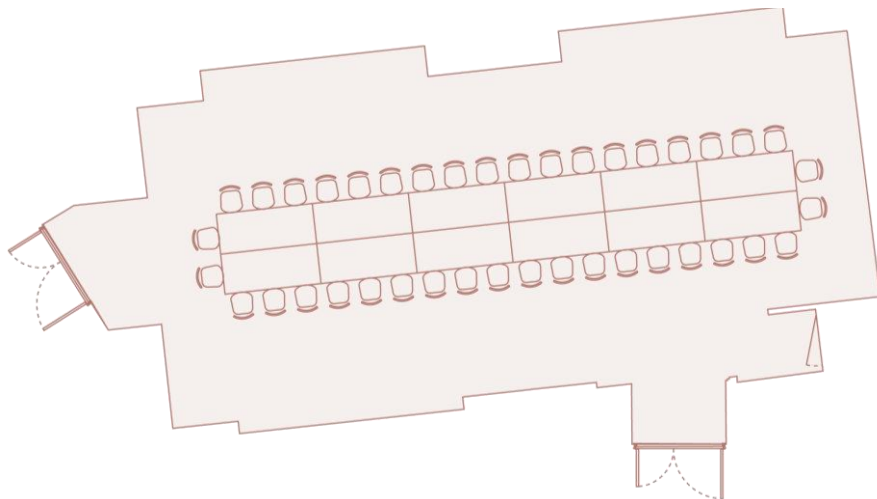
- General
- Reception
- Theatre
- Cabaret
- Classroom
- Banquet
- Conference
- U-Shape



# AUGUSTE LUMIERE

## FLOORPLAN

Conference layout A + B



### SPECIFICATIONS

Capacity: 40

Dimensions: 91m<sup>2</sup>

MAIN MENU

### FLOOR PLAN

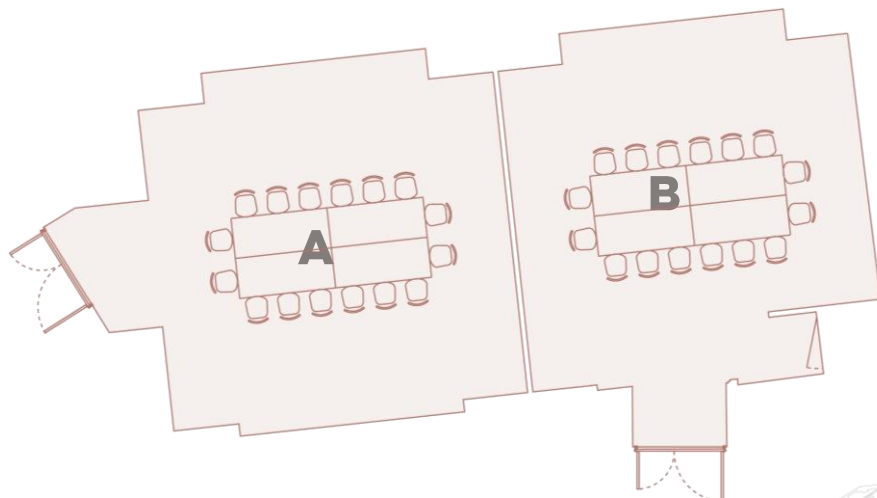
- General
- Reception
- Theatre
- Cabaret
- Classroom
- Banquet
- Conference
- U-Shape



# AUGUSTE LUMIERE

## FLOORPLAN

Conference Layout A OR B



### SPECIFICATIONS

Capacity: 16 / 16

Dimensions: 45.6 / 45.6 m<sup>2</sup>

[MAIN MENU](#)

### FLOOR PLAN

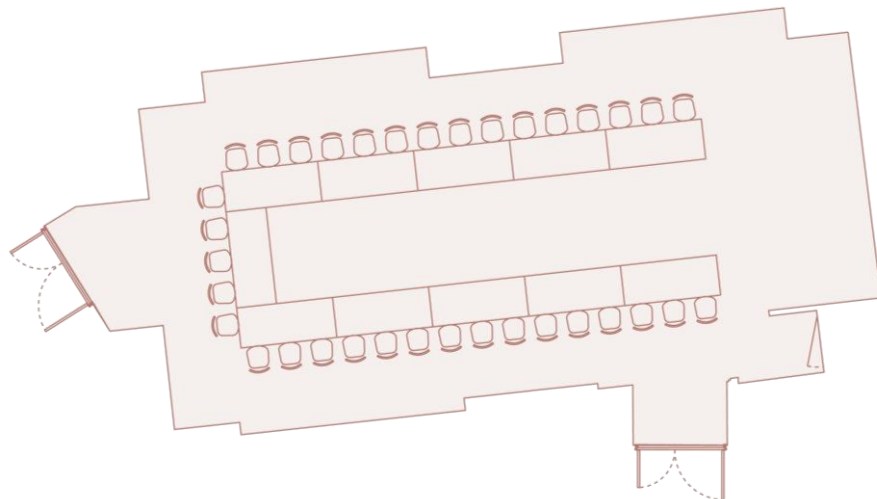
- General
- Reception
- Theatre
- Cabaret
- Classroom
- Banquet
- Conference
- U-Shape



# AUGUSTE LUMIERE

## FLOORPLAN

U-Shape Layout A + B



### SPECIFICATIONS

Capacity: 35

Dimensions: 91m<sup>2</sup>

MAIN MENU

### FLOOR PLAN

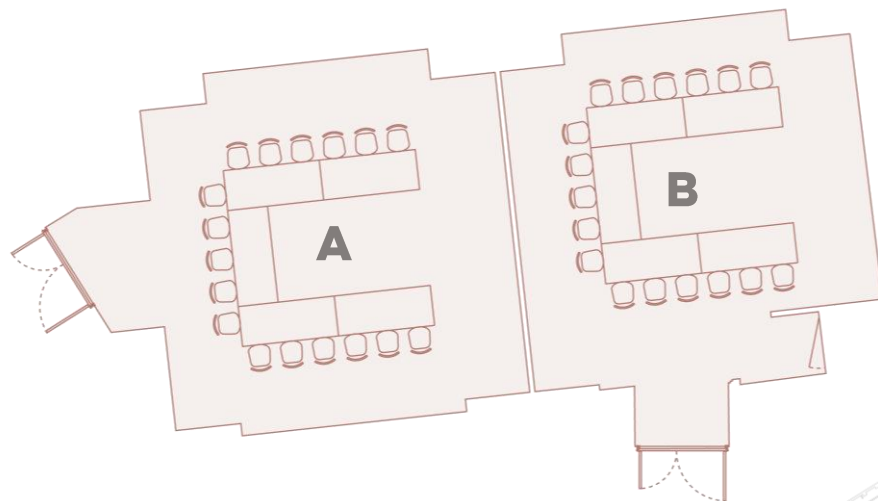
- General
- Reception
- Theatre
- Cabaret
- Classroom
- Banquet
- Conference
- U-Shape



# AUGUSTE LUMIERE

## FLOORPLAN

U-Shape Layout A OR B



### SPECIFICATIONS

Capacity: 17 / 17

Dimensions: 45.6 /45.6 m2

[MAIN MENU](#)

### FLOOR PLAN

- General
- Reception
- Theatre
- Cabaret
- Classroom
- Banquet
- Conference
- U-Shape



# AUGUSTE LUMIERE

## AUDIO VISUAL FEATURES

- Screen:-240 X 180
- Video projector (5000 lumens)
- Barco Click & Share
- USB connection for sharing documents ,enable presentations for PowerPoint, Excel, Word and PDF documents, photos on the room display from your computer
- Amplification with 4 Bose enceintes DM2S ( puissance tbc )
- High speed and Wi-fi internet access
- Air conditioning

OVERVIEW

GALLERY

FLOORPLAN

FACILITIES



LOUIS LUMIÈRE

OVERVIEW

GALLERY FLOOR

FLOORPLAN

FACILITIES

## LOUIS LUMIÈRE

Lounge Louis Lumière is an excellent choice for conferences, fashion shows or road shows.

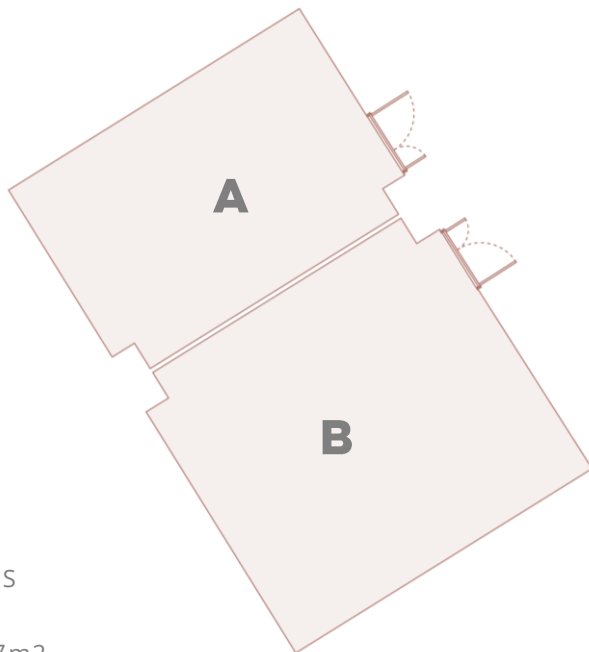
With 87m2 of unobstructed space you can host a dinner for up to 70 guests or divide the elegant spaces into two separate rooms.



LOUIS LUMIERE

# FLOORPLAN

General Layout



## SPECIFICATIONS

Capacity: 100

Dimensions: 87m<sup>2</sup>

MAIN MENU

FLOOR PLAN

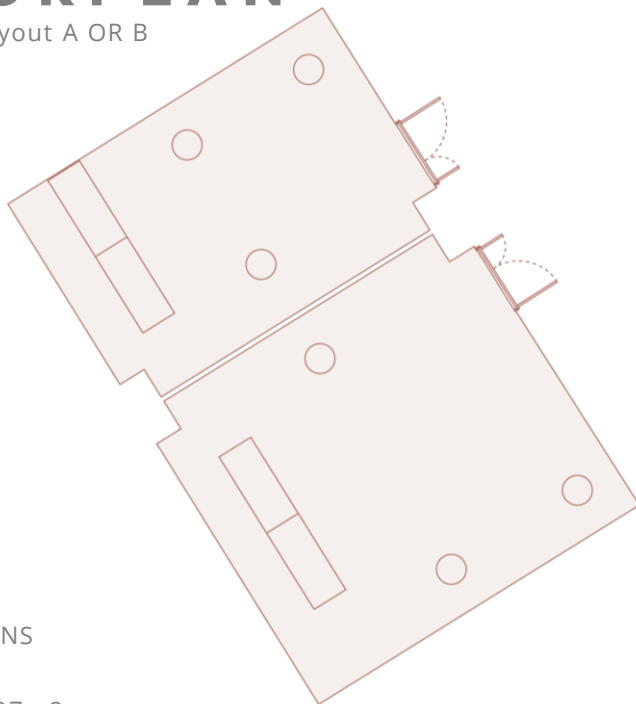
General  
Reception  
Theatre  
Cabaret  
Classroom  
Banquet  
Conference  
U-Shape



# LOUIS LUMIERE

## FLOORPLAN

Reception Layout A OR B



### SPECIFICATIONS

Capacity: 100

Dimensions: 87m<sup>2</sup>

[MAIN MENU](#)

### FLOOR PLAN

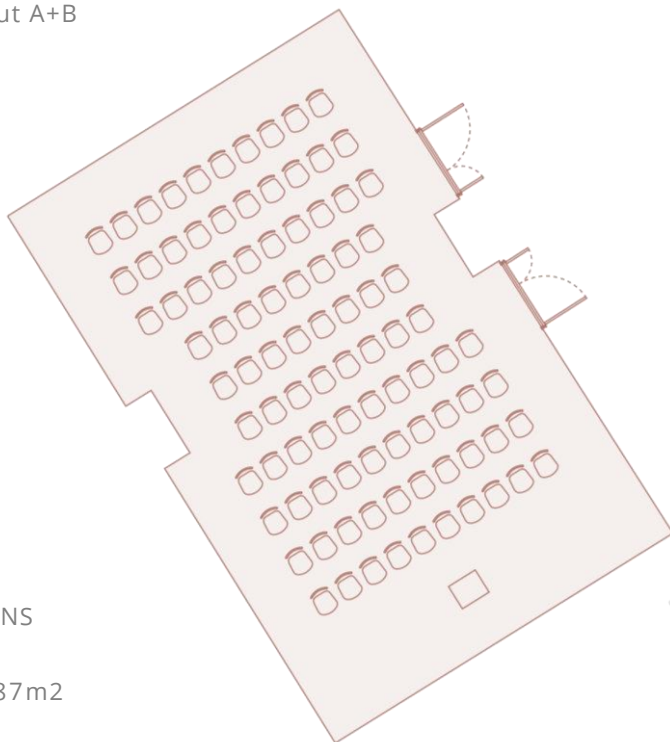
General  
Reception  
Theatre  
Cabaret  
Classroom  
Banquet  
Conference  
U-Shape



# LOUIS LUMIERE

## FLOORPLAN

Theatre layout A+B



### SPECIFICATIONS

Capacity: 94

Dimensions: 87m<sup>2</sup>

[MAIN MENU](#)

### FLOOR PLAN

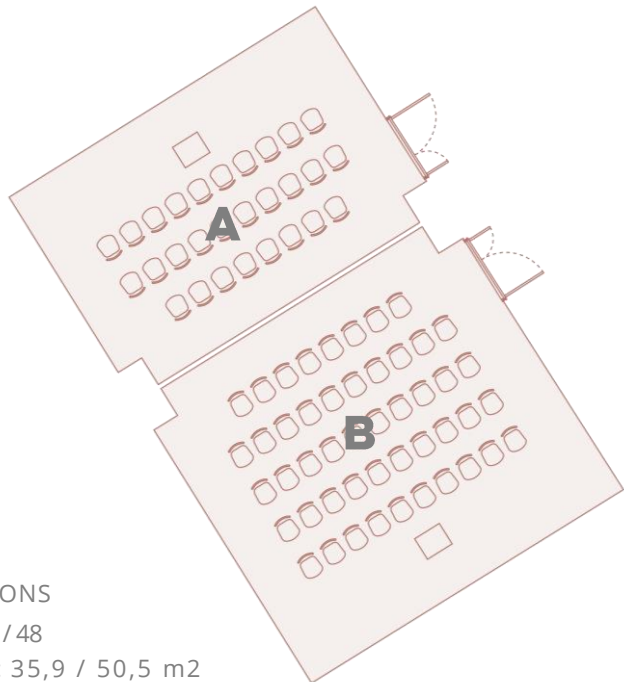
- General
- Reception
- Theatre
- Cabaret
- Classroom
- Banquet
- Conference
- U-Shape



# LOUIS LUMIERE

## FLOORPLAN

Theatre layout A OR B



### SPECIFICATIONS

Capacity: 28 / 48

Dimensions: 35,9 / 50,5 m2

[MAIN MENU](#)

### FLOOR PLAN

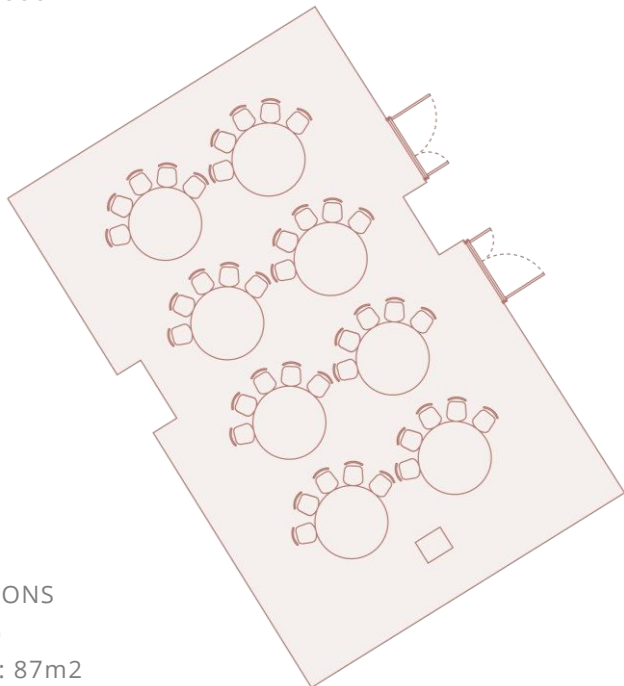
- General
- Reception
- Theatre
- Cabaret
- Classroom
- Banquet
- Conference
- U-Shape



# LOUIS LUMIERE

## FLOORPLAN

Cabaret layout A + B



### SPECIFICATIONS

Capacity: 40

Dimensions: 87m<sup>2</sup>

MAIN MENU

### FLOOR PLAN

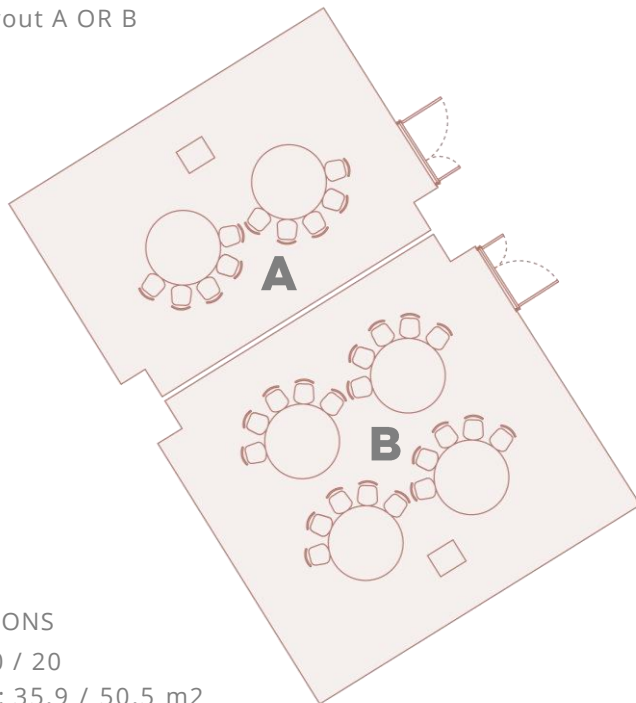
- General
- Reception
- Theatre
- Cabaret
- Classroom
- Banquet
- Conference
- U-Shape



# LOUIS LUMIERE

## FLOOR PLAN

Cabaret layout A OR B



### SPECIFICATIONS

Capacity: 10 / 20

Dimensions: 35,9 / 50,5 m<sup>2</sup>

[MAIN MENU](#)

### FLOOR PLAN

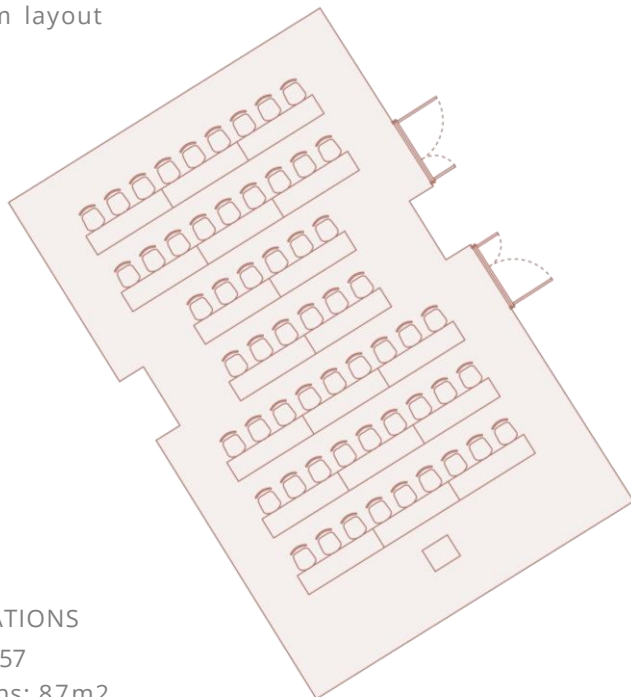
- General
- Reception
- Theatre
- Cabaret
- Classroom
- Banquet
- Conference
- U-Shape



# LOUIS LUMIERE

## FLOORPLAN

Classroom layout



### SPECIFICATIONS

Capacity: 57

Dimensions: 87m<sup>2</sup>

[MAIN MENU](#)

### FLOOR PLAN

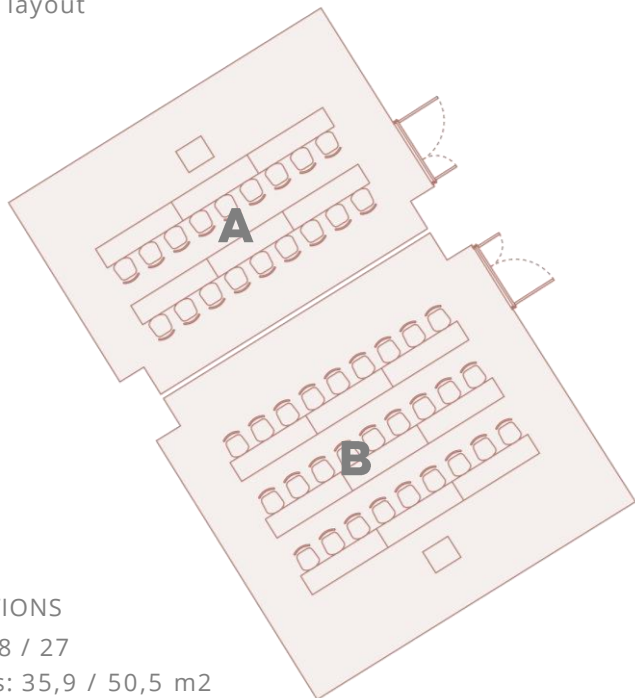
- General
- Reception
- Theatre
- Cabaret
- Classroom
- Banquet
- Conference
- U-Shape



# LOUIS LUMIERE

## FLOORPLAN

Classroom layout



### SPECIFICATIONS

Capacity: 18 / 27

Dimensions: 35,9 / 50,5 m<sup>2</sup>

[MAIN MENU](#)

### FLOOR PLAN

- General
- Reception
- Theatre
- Cabaret
- Classroom
- Banquet
- Conference
- U-Shape

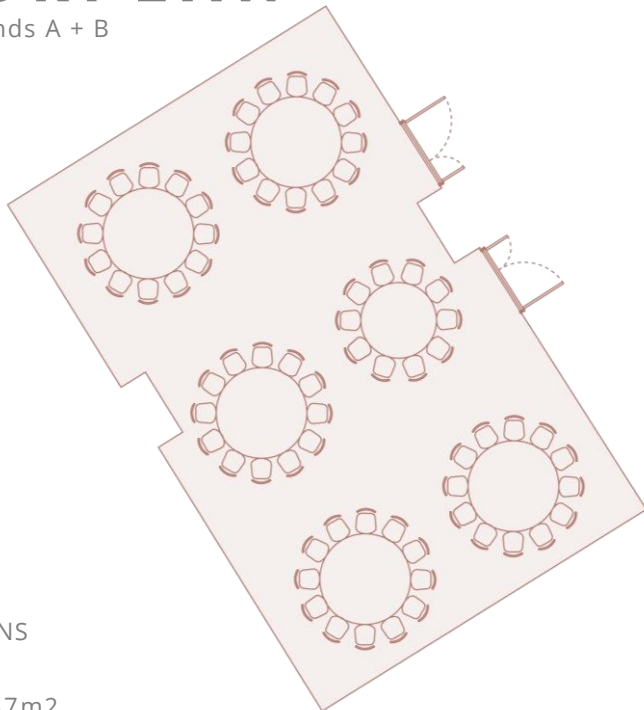




# LOUIS LUMIERE

## FLOORPLAN

Banquet Rounds A + B



### SPECIFICATIONS

Capacity: 70

Dimensions: 87m<sup>2</sup>

MAIN MENU

### FLOOR PLAN

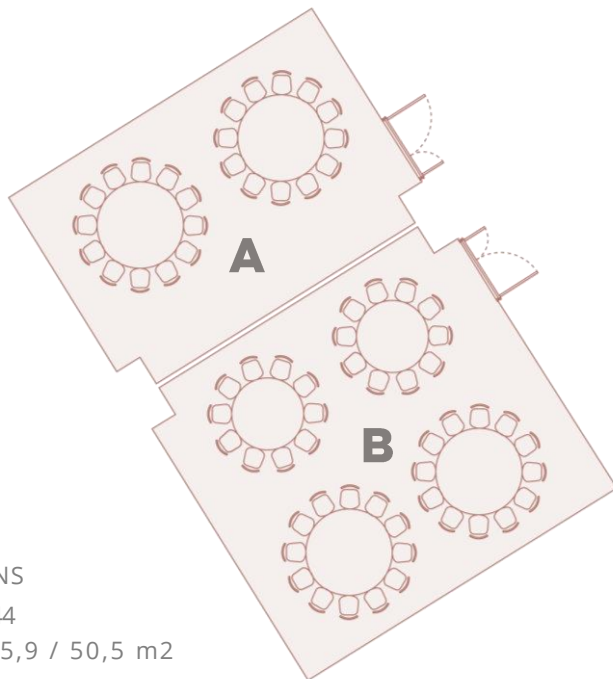
- General
- Reception
- Theatre
- Cabaret
- Classroom
- Banquet
- Conference
- U-Shape



# LOUIS LUMIERE

## FLOORPLAN

Banquet Rounds A OR B



### SPECIFICATIONS

Capacity: 24 / 44

Dimensions: 35,9 / 50,5 m<sup>2</sup>

MAIN MENU

### FLOOR PLAN

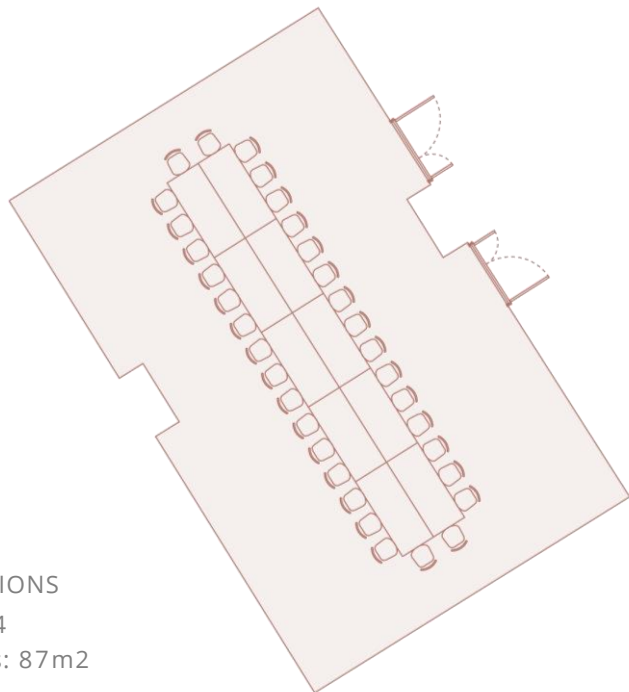
- General
- Reception
- Theatre
- Cabaret
- Classroom
- Banquet
- Conference
- U-Shape



# LOUIS LUMIERE

## FLOOR PLAN

Conference layout A + B



### SPECIFICATIONS

Capacity: 34

Dimensions: 87m<sup>2</sup>

[MAIN MENU](#)

### FLOOR PLAN

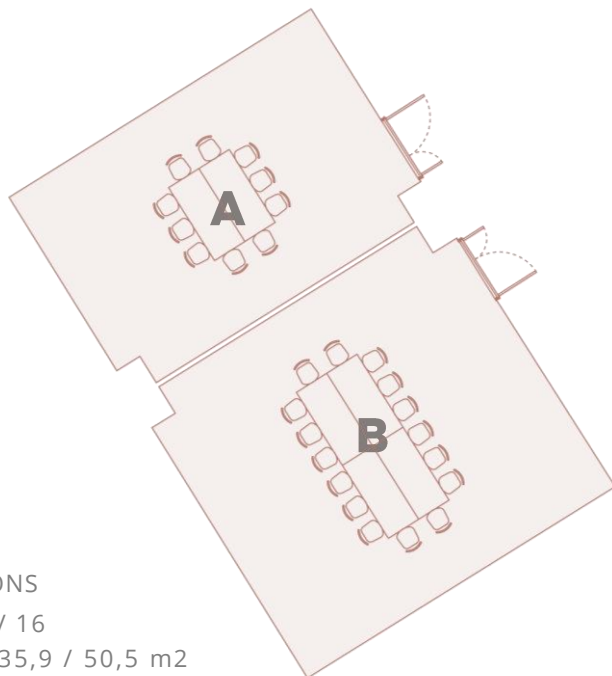
- General
- Reception
- Theatre
- Cabaret
- Classroom
- Banquet
- Conference
- U-Shape



# LOUIS LUMIERE

## FLOORPLAN

Conference Layout A OR B



### SPECIFICATIONS

Capacity: 10 / 16

Dimensions: 35,9 / 50,5 m<sup>2</sup>

[MAIN MENU](#)

FLOOR PLAN

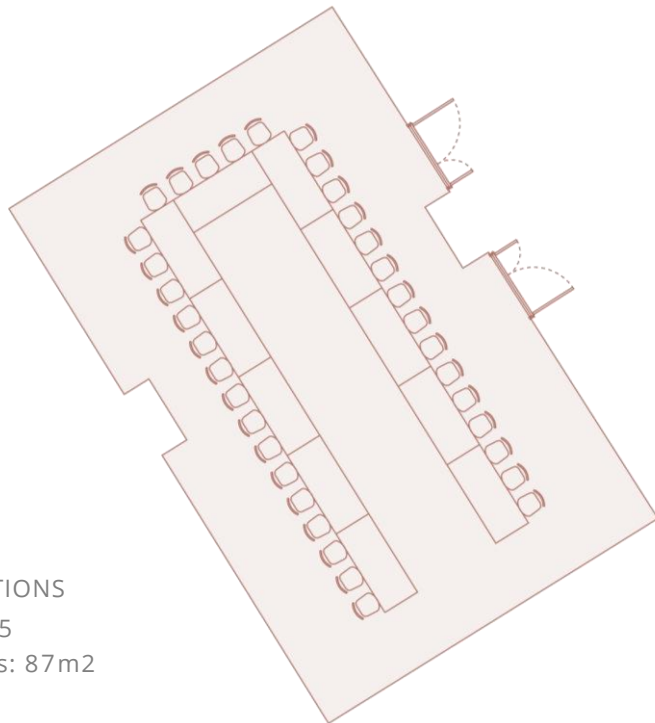
General  
Reception  
Theatre  
Cabaret  
Classroom  
Banquet  
Conference  
U-Shape



# LOUIS LUMIERE

## FLOORPLAN

U-Shape layout A + B



### SPECIFICATIONS

Capacity: 35

Dimensions: 87m<sup>2</sup>

MAIN MENU

### FLOOR PLAN

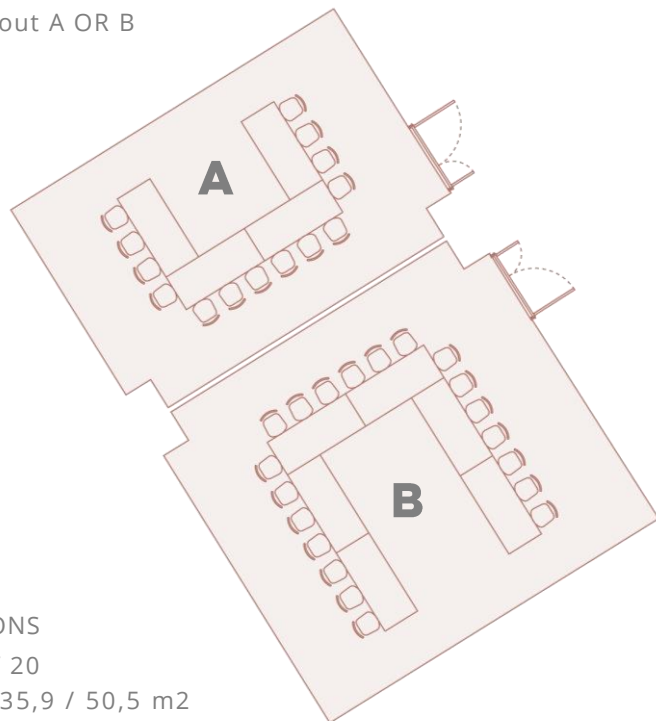
- General
- Reception
- Theatre
- Cabaret
- Classroom
- Banquet
- Conference
- U-Shape



# LOUIS LUMIERE

## FLOORPLAN

U-Shape Layout A OR B



### SPECIFICATIONS

Capacity: 14 / 20

Dimensions: 35,9 / 50,5 m<sup>2</sup>

[MAIN MENU](#)

### FLOOR PLAN

- General
- Reception
- Theatre
- Cabaret
- Classroom
- Banquet
- Conference
- U-Shape



LOUIS LUMIERE

# AUDIO VISUAL FEATURES

- Screen:-240 X 180
- Video projector (5000 lumens)
- Barco Click & Share
- USB connection for sharing documents ,enable presentations for PowerPoint, Excel, Word and PDF documents, photos on the room display from your computer
- Amplification with 4 Bose enceintes DM2S ( puissance tbc )
- High speed and Wi-fi internet access
- Air conditioning

OVERVIEW

GALLERY

FLOORPLAN

FACILITIES

# FOYER

OVERVIEW

GALLERY

FLOOR PLAN

FACILITIES

## FOYER

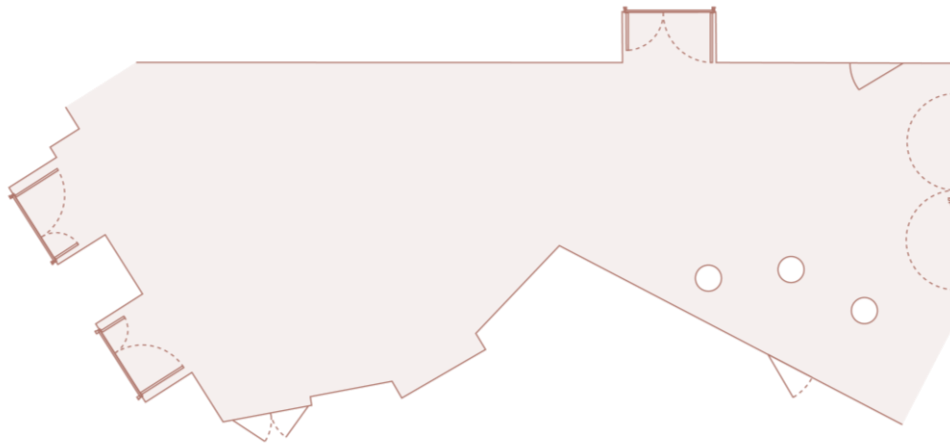
The ideal setting for a reception. Your guests can enjoy the decor and the numerous art pieces honoring the brothers Lumiere who hosted the first movie projection in this very same space in 1895.



# FOYER

## FLOORPLAN

General Layout



FLOOR PLAN

General  
Reception

### SPECIFICATIONS

Capacity: 100

Dimensions: 91m<sup>2</sup>

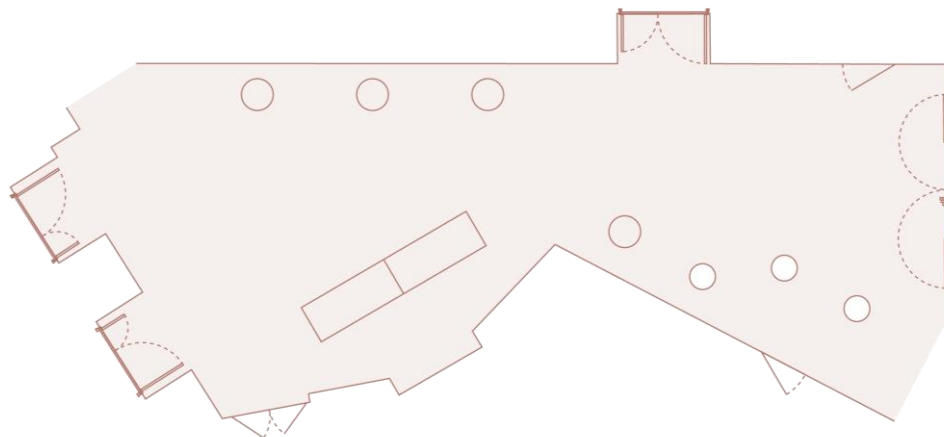


MAIN MENU

# FOYER

## FLOORPLAN

Reception Layout



FLOOR PLAN

General  
Reception

### SPECIFICATIONS

Capacity: 100

Dimensions: 91m<sup>2</sup>

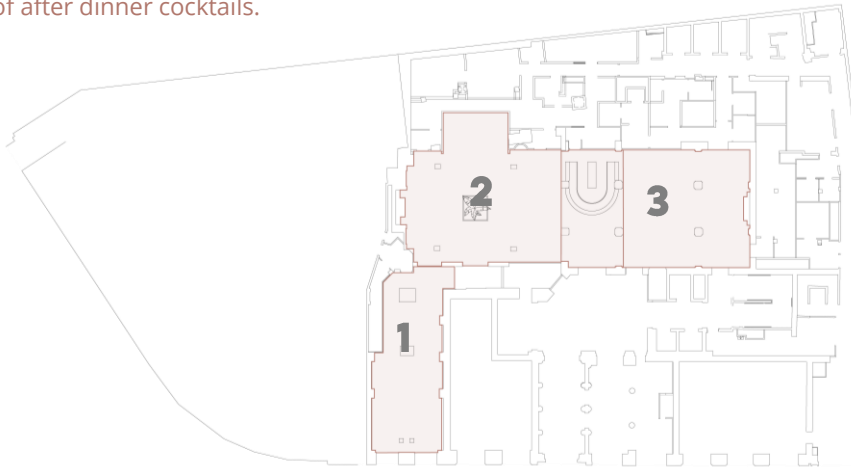


MAIN MENU

# MAGNIFIQUE EVENTS

Choose from one of our spectacular venues to host your event. Entertain, network, during a standing reception in the gallery before proceeding to dinner in the romantic and soothing atmosphere of our restaurant. Having a great time and want to treat your guests a little longer? Make your way to the lounge where our expert mixologist will delight your palate with a variety of after dinner cocktails.

1. GALERIE DES NOUVELLES IMAGES
2. LE RESTAURANT
3. LE BAR LOUNGE



MAIN MENU

# GALERIE DES NOUVELLES IMAGES



OVERVIEW

GALLERY

FLOORPLAN

## GALERIE DES NOUVELLES IMAGES

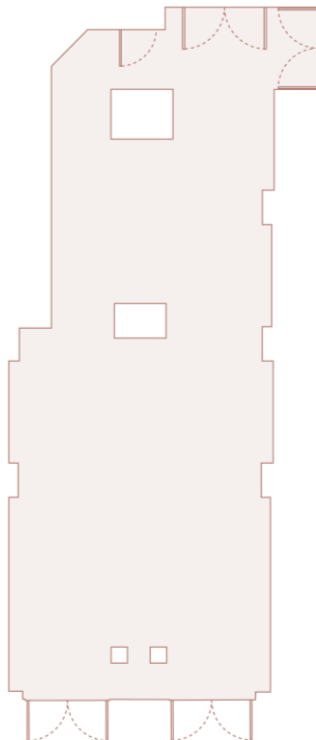
A trendy space in the centre of Paris for private events. The Galerie has a street entrance and opens on to the hotel restaurant.

From the edgiest, most avant-garde cocktail parties to personal appearances by artists, La Galerie is the choice for anyone who loves creative talent and style.

# FOYER

## FLOORPLAN

General Layout



### SPECIFICATIONS

Capacity: 65

Dimensions: 83m<sup>2</sup>

[MAIN MENU](#)

FLOOR PLAN

General

Reception

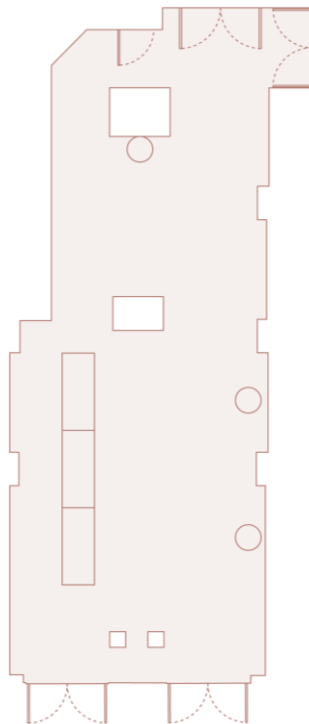
Conference



# FOYER

## FLOORPLAN

General Layout



### SPECIFICATIONS

Capacity: 65

Dimensions: 83m<sup>2</sup>

[MAIN MENU](#)

FLOOR PLAN

General

Reception

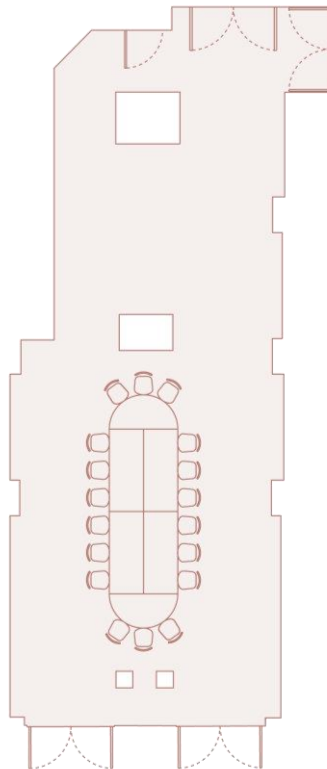
Conference



# FOYER

## FLOORPLAN

General Layout



FLOOR PLAN

General  
Reception  
Conference

SPECIFICATIONS

Capacity: 65

Dimensions: 83m<sup>2</sup>



MAIN MENU

# LE RESTAURANT DU SCRIBE



OVERVIEW

GALLERY FLOOR

FLOORPLAN

FACILITIES



## LE RESTAURANT DU SCRIBE

In a poetic and contemporary venue, the restaurant's gastronomy follows the Scribe's culinary tradition, using the finest products and presenting them in ways that never fail to astonish. Available for group for up to 60 people our Executive Chef will be sure to create menus that will astonish your guests.



# LE BAR & LOUNGE DU SCRIBE



OVERVIEW

GALLERY FLOOR

FLOORPLAN

FACILITIES










## LE BAR & LOUNGE

Reinvented with the Club spirit in mind by the designer, Tristan Auer, the bar welcomes you upon arrival at 1, rue Scribe.

The bar beats to the rhythm of the capital during the day, and in the evening, in a cozy candlelight ambiance,

our mixology experts invite you to relax away from the hustle and bustle of the city with our retro and stunning cocktails.

# CAPACITY CHART

MEETING ROOM	DIMENSIONS M.	SURFACE M <sup>2</sup>	THEATER	U-SHAPE	BOARDROOM	CLASSROOM	BANQUETTING	COCKTAIL	CABARET
									
<b>AUGUSTE LUMIERE</b>	6,8 x 13,4	91,1	100	35	40	48	70	100	40
AUGUSTE LUMIERE a	6,8x6,7	45,6	42	17	16	18	40	40	15
AUGUSTE LUMIERE b	6,8x6,7	45,6	41	17	16	18	36	40	15
<b>LOUIS LUMIERE</b>	11,8 x 7,5	87,2	94	35	34	57	70	100	40
LOUIS LUMIERE a	7,5x4,9	35,9	28	14	10	18	24	40	10
LOUIS LUMIERE b	7,5x6,9	50,5	48	20	16	27	44	80	20
<b>FOYER</b>	16,5 x 5,95	91	/	/	/	/	/	100	/
<b>SALON 1895</b>	9,9 x 20,3	170,3	149	/	/	/	102	200	/
SALON 1895 a	9x11,1	85,3	89	23	28	42	58	70	35
SALON 1895 b	9,9x9,1	84,7	60	23	22	/	44	80	/
<b>GALERIE</b>	15,2 x 5,99	83,4	/	/	/	/	18	65	/

# WELLNESS

## WELLNESS & HAMMAM by Keiraõ Spa

Designed for soothing beauty treatments, the skincare approach of Wellness by Keiraõ Spa includes naturopathy and alternative medicine. Protocols have been reviewed by therapists and based on Organic and 100% natural products.

- Wellness by Keiraõ Spa includes 2 treatment rooms with a duo facility • Fitness area features a full range of state-of-the-art equipment.



# FOOD AND DRINK

## RESTAURANT BAR & CAFÉ

Enjoy a mouthwatering culinary experience paired with our heartwarming service, right here, in the center of Paris. Impressive venues, delicious treats await at any of our restaurant, bar or café

**Restaurant** Savor the classics of French cuisine with a Mediterranean flair

**Bar Du Scribe** Relax away from the hustle and bustle of the city with our retro and stunning cocktails

**Café Scribe** Welcomes experts of coffee and tea, and lovers of sweet pastries in the sophisticated boutique



# SUSTAINABILITY

## Green day delegate offer

Including meeting room with recycle note pad and pencil,  
A morning detox break and afternoon break  
Lunch with local product and organic bread.

## In room reward

instead of having a VIP treatment select from listed association a donation .

## Food and Beverage

Natural and biodynamic wines  
Gluten-free, lactose-free, sugar-free diet  
Vegetable milks: soybeans, oats, hazelnuts, almonds, coconuts,  
Exit refined sugar: alternative and more natural sugars: honey,  
agave syrup, coconut sugar  
Smart foods, vegetable proteins: chickpeas, quinoa, lentils  
Straws have been removed from restaurants and bars. On request,  
customers have cardboard straw

## Guestroom product

Cotton swabs in bamboo  
Rooms are cleaned using a dry steam system  
Soaps are recycled by the UNISOAP and sent to countries in need.  
For stays longer than one night, customers are encouraged to  
keep their sheets and towels.  
The coffee are biodegradable.



Planet 21

Read more about the [AccorHotels sustainability programme Planet 21](#).

# ACCOMMODATION AND FACILITIES



## ROOMS & SUITES

- 162 rooms from Superior to Luxury Premium
- 39 suites from Junior Suite to Duplex

**Distinctive features** • A 19th century Haussmann building • Ultimate Parisian residence atmosphere by designer Tristan Auer

**Features and amenities** • Fireplace in all rooms and Suites • Large open wardrobe • Chromecast • Mini bar including gluten free options • UK and US plugs • Sofitel MyBed™

**Live in Paris like at home.** Inspired by the Haussmann apartments with ideal dimensions to welcome you, the rooms and suites are the perfect way to live in Paris like home with your family and friends

**Each bedroom** offer a dressing room designed in reference to the universe of luxury and shopping of the neighborhood.



# ALL MEETING PLANNER

## PERFECT EVENTS. PERFECTLY REWARDED.

Join the ALL Meeting Planner and earn points every time you organise an event. Book workspaces wherever you need, whenever you want. 2,400 hotels across the world, from luxury to budget-friendly.

- 2 euros spent = 1 Rewards point
- Finance future events using your points. Or use them for your next trip, for concert tickets, or a match. Your points, your choice.
- Sharing points
- There are no blackout dates on Rewards points. Use them whenever you choose.
- There are no expiry dates on your points. No rush, no fuss.
- Free membership



MEETINGS  
& EVENTS

# CONTACT US

## NEARBY

**Famous sites** Opera Garnier, Place Vendôme, Grands Boulevards and exclusive department stores

**Museums** Louvre, Art Décoratifs, Grand Palais

**Entertainment** The Olympia hall, the Grand Rex, Edouard VII Theater

## TRANSPORTS

**Metro** Opera, Madeleine, Havre Caumartin Metro Stations

**RER A** Auber Station

**AIRPORT** Roissy CDC International Airport  
by Roissybus Opéra Station (50 m)



## CONTACT OUR CONFERENCE AND EVENTS TEAM

+330144712484

[delphine.peyron@sofitel.com](mailto:delphine.peyron@sofitel.com)

1 RUE SCRIBE

75009 PARIS.