

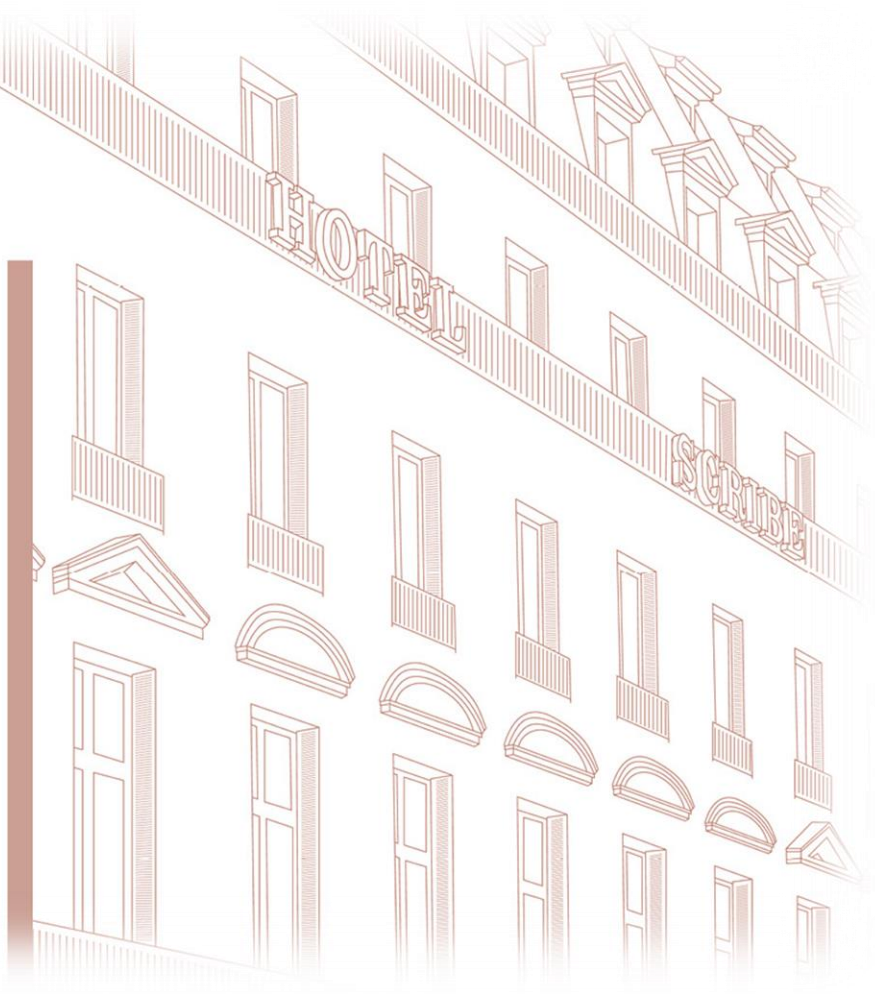


LE SCRIBE

MANAGED BY SOFITEL

THERE ARE
MEETINGS,
THEN
THERE ARE
MAGNIFIQUE
MEETINGS OF
MINDS.

ENTER



LE SCRIBE PARIS OPERA

Let's experience the Parisian lifestyle in this emblematic address within the intimacy of our Haussmann residence. With its club spirit, it is the perfect meeting place for your exclusive events. A collaboration with French designer Tristan Auer



CONTACT US



MAGNIFIQUE MEETINGS



ACCOMODATIONS AND FACILITIES



FOOD AND DRINK



WELLNESS



REWARDS SCHEME



CAPACITY CHART

MAGNIFIQUE MEETINGS

Whether you are organizing a meeting, congress, press conference, gala dinner or a fashion show, our 7 meeting and reception facilities offer a total area of 5630 sq ft. for events up to 200 guests. Our teams are your partners, working with you to ensure the success of your event

1. 1895, A, B

3. AUGUSTE LUMIERE, A, B

2. LOUIS LUMIERE, A, B

4. FOYER



CAPACITY CHART

1895

OVERVIEW

GALLERY

FLOORPLAN

FACILITIES

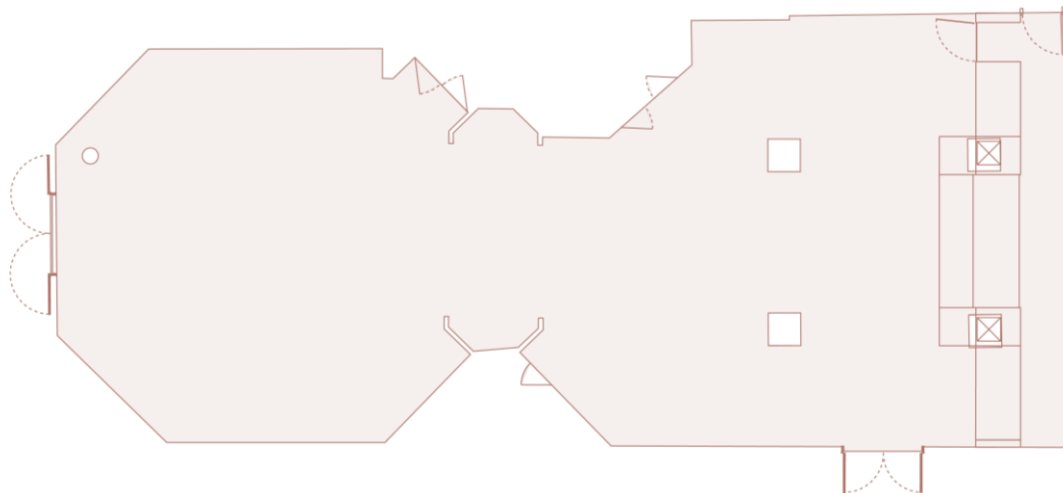
1895

Modular space which can be offered in the form of two separated lounges with a capacity of up to 200 guests . This reception room can be arranged according to your needs and at your convenience in a U shape style or for a cocktail celebration/social Events. Welcome to the 1895 the birth place of Cinema!

1895

FLOORPLAN

General layout



FLOOR PLAN

- General
- Reception
- Theatre
- Cabaret
- Classroom
- Banquet
- Conference
- U-Shape

SPECIFICATIONS

Capacity: 200

Dimensions: 170m²

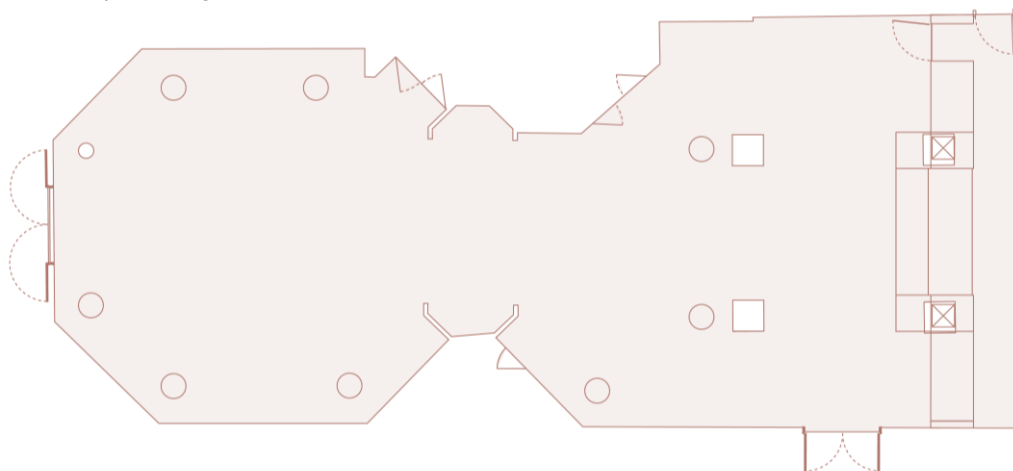


MAIN MENU

1895

FLOORPLAN

Reception layout



FLOOR PLAN

- General
- Reception
- Theatre
- Cabaret
- Classroom
- Banquet
- Conference
- U-Shape

SPECIFICATIONS

Capacity: 200

Dimensions: 170m²

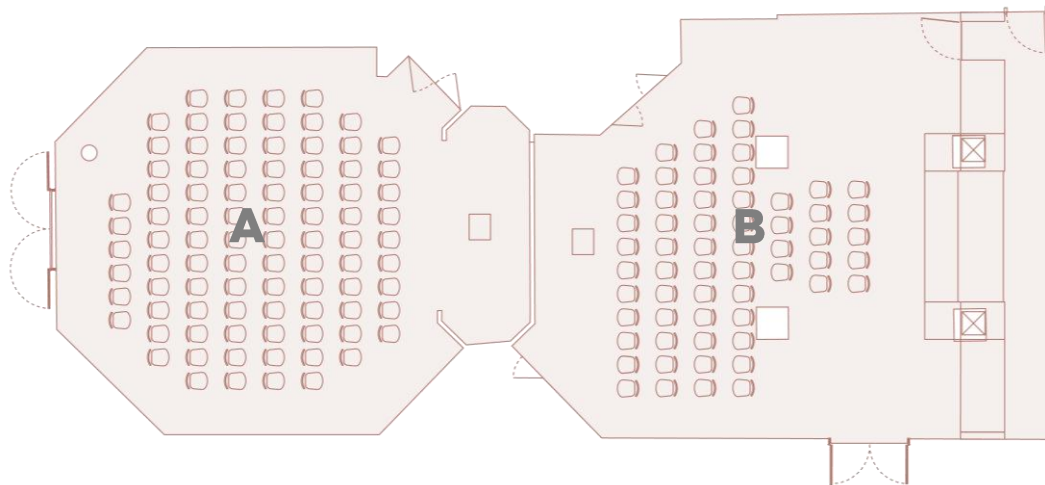


MAIN MENU

1895

FLOORPLAN

Theatre layout



FLOOR PLAN

- General
- Reception
- Theatre
- Cabaret
- Classroom
- Banquet
- Conference
- U-Shape

SPECIFICATIONS

Capacity: 149

Dimensions: 170m²

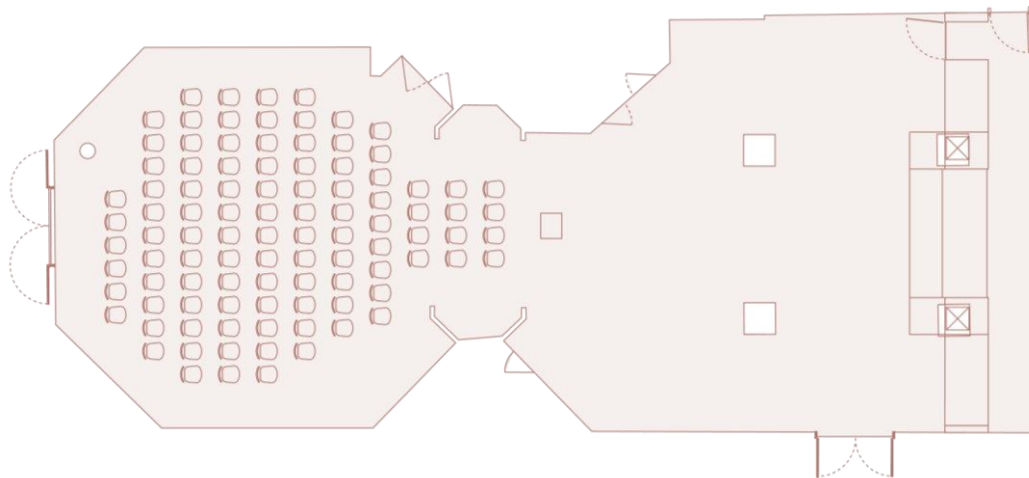


MAIN MENU

1895

FLOORPLAN

Theatre layout 1895 A



FLOOR PLAN

- General
- Reception
- Theatre
- Cabaret
- Classroom
- Banquet
- Conference
- U-Shape

SPECIFICATIONS

Capacity: 111

Dimensions: 170m2

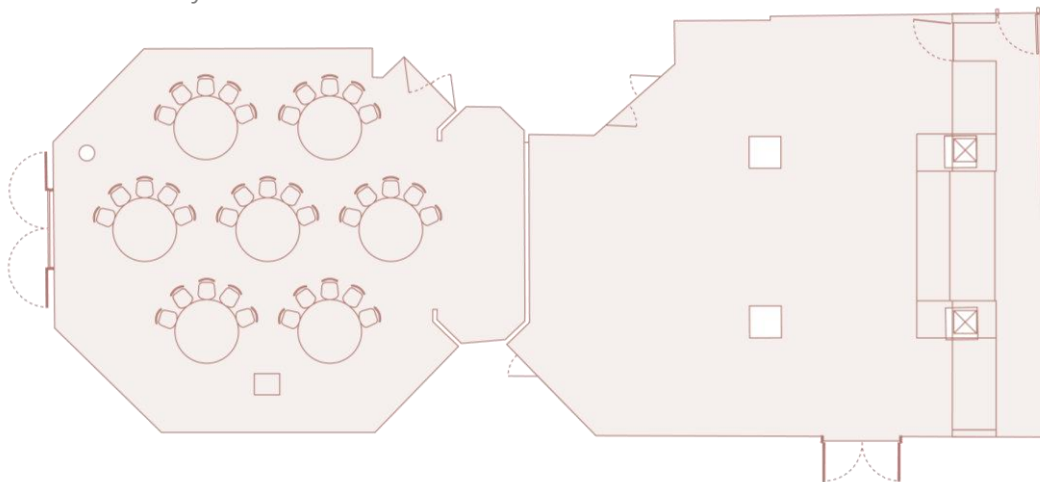


MAIN MENU

1895

FLOORPLAN

Cabaret layout



FLOOR PLAN

- General
- Reception
- Theatre
- Cabaret
- Classroom
- Banquet
- Conference
- U-Shape

SPECIFICATIONS

Capacity: 35

Dimensions: 170m2

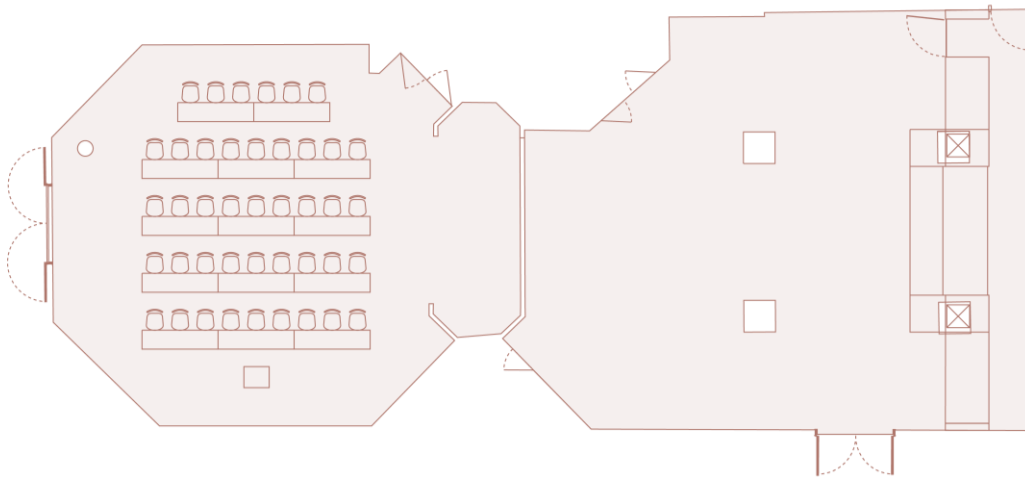


MAIN MENU

1895

FLOORPLAN

Classroom layout



FLOOR PLAN

- General
- Reception
- Theatre
- Cabaret
- Classroom
- Banquet
- Conference
- U-Shape

SPECIFICATIONS

Capacity: 42

Dimensions: 170m²

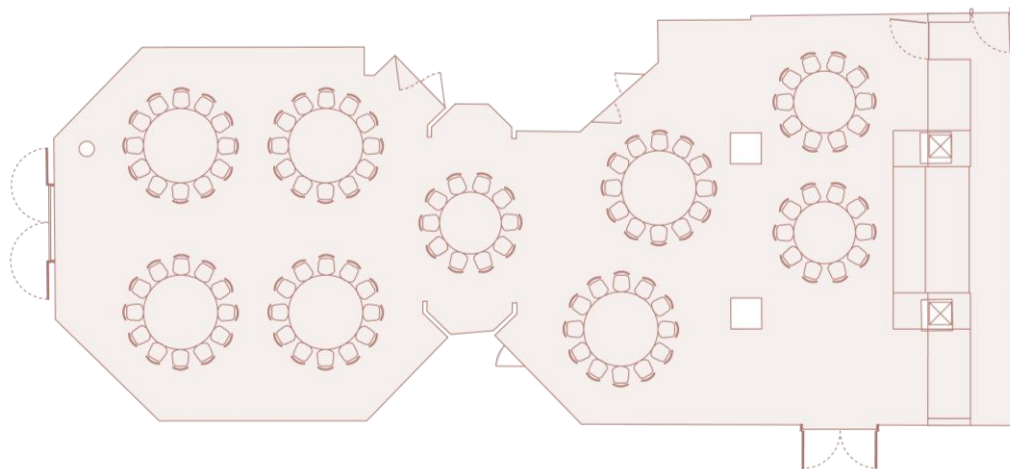


MAIN MENU

1895

FLOORPLAN

Banquet layout A + B



FLOOR PLAN

- General
- Reception
- Theatre
- Cabaret
- Classroom
- Banquet
- Conference
- U-Shape

SPECIFICATIONS

Capacity: 102

Dimensions: 170m²

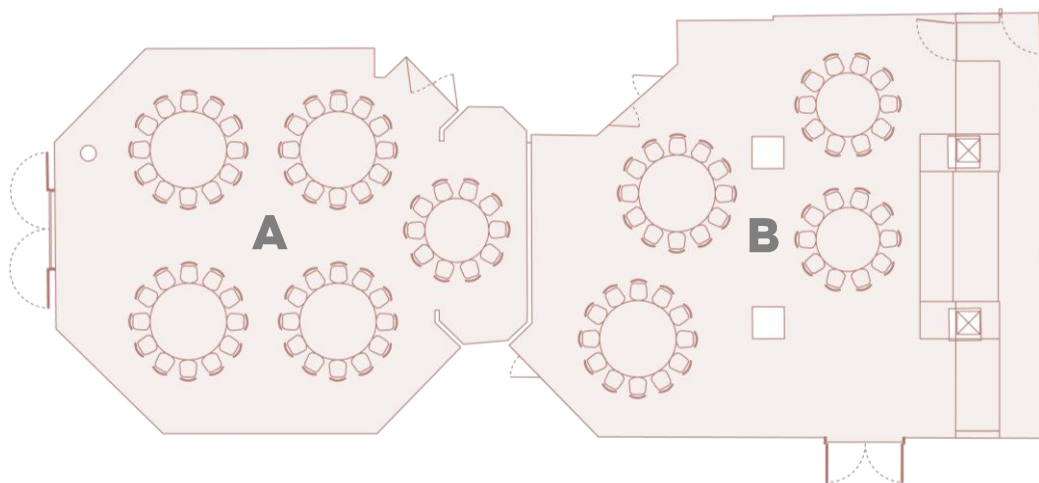


MAIN MENU

1895

FLOORPLAN

Banquet layout A OR B



FLOOR PLAN

- General
- Reception
- Theatre
- Cabaret
- Classroom
- Banquet
- Conference
- U-Shape

SPECIFICATIONS

Capacity: 58 / 44

Dimensions: 170m²

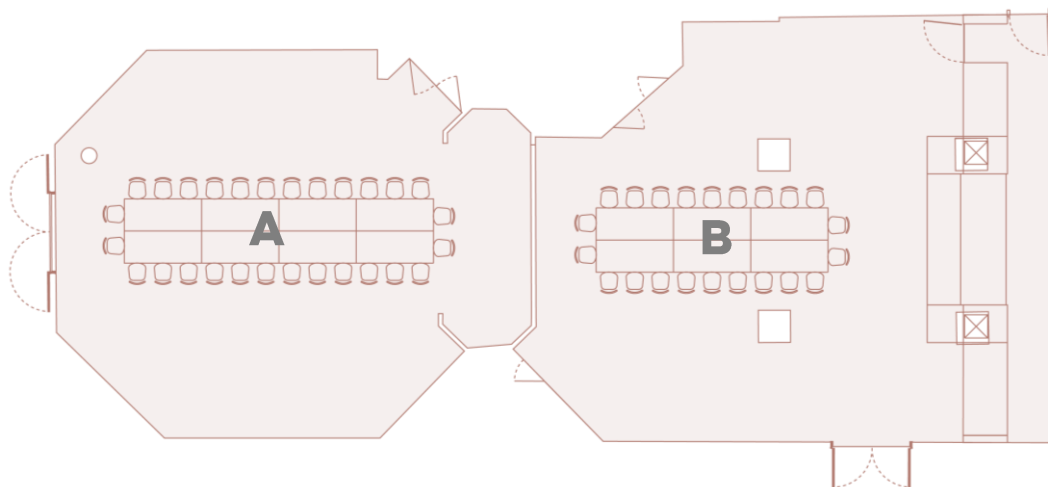


MAIN MENU

1895

FLOORPLAN

Conference layout A OR B



FLOOR PLAN

- General
- Reception
- Theatre
- Cabaret
- Classroom
- Banquet
- Conference
- U-Shape

SPECIFICATIONS

Capacity: 28 / 22

Dimensions: 170m²

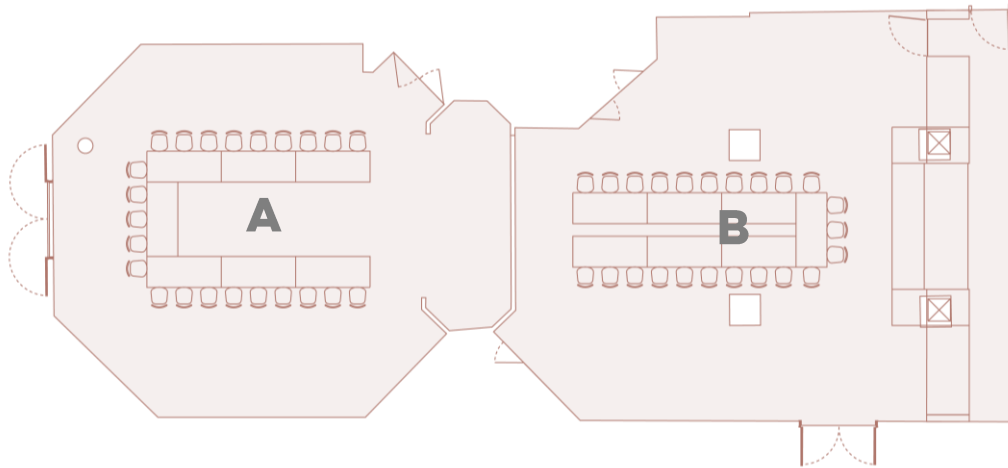


MAIN MENU

1895

FLOORPLAN

U-Shape layout A OR B



FLOOR PLAN

- General
- Reception
- Theatre
- Cabaret
- Classroom
- Banquet
- Conference
- U-Shape

SPECIFICATIONS

Capacity: 23 /23

Dimensions: 170m2



MAIN MENU

1895

AUDIO VISUAL FEATURES

- Screen:-240 X 180
- Video projector (5000 lumens)
- Barco Click & Share
- USB connection for sharing documents ,enable presentations for PowerPoint, Excel, Word and PDF documents, photos on the room display from your computer
- Amplification with 4 Bose enceintes DM2S (puissance tbc)
- High speed and Wi-fi internet access
- Air conditioning

OVERVIEW

GALLERY

FLOORPLAN

FACILITIES

AUGUSTE LUMIÈRE

OVERVIEW

GALLERY

FLOORPLAN

FACILITIES

AUGUSTE LUMIÈRE

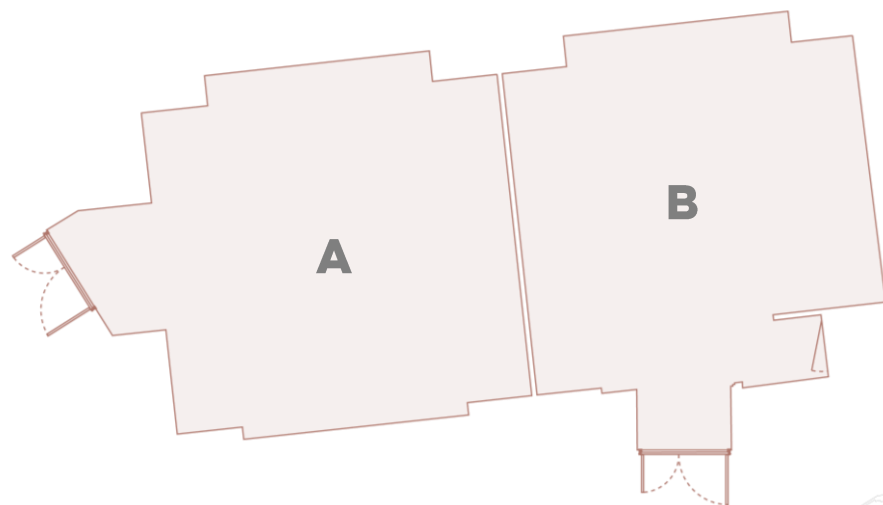
The perfect meeting room for your day delegate meeting or for a co-working session.

In a Plenary session for up to a 100 delegates in theatre style or 40 guests in cabaret style for a dinner presentation.

AUGUSTE LUMIERE

FLOORPLAN

General layout



SPECIFICATIONS

Capacity: 100

Dimensions: 91m²

[MAIN MENU](#)

FLOOR PLAN

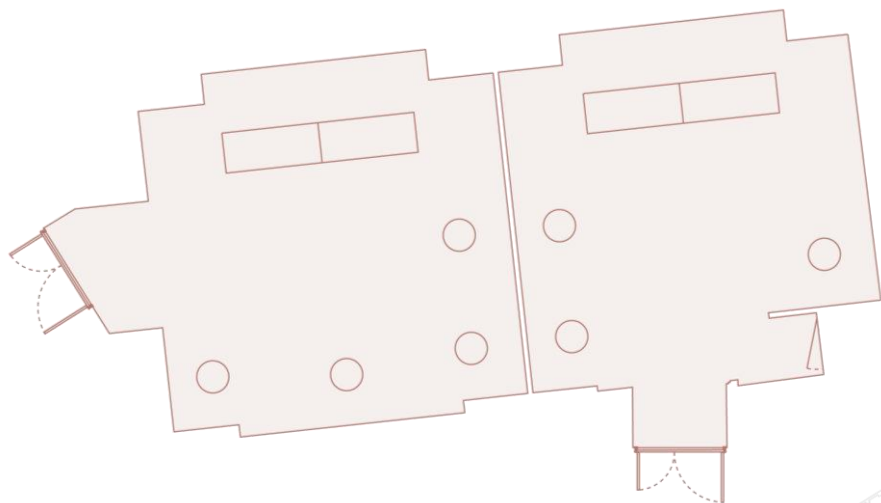
General
Reception
Theatre
Cabaret
Classroom
Banquet
Conference
U-Shape



AUGUSTE LUMIERE

FLOORPLAN

Reception layout



SPECIFICATIONS

Capacity: 100

Dimensions: 91m²

[MAIN MENU](#)

FLOOR PLAN

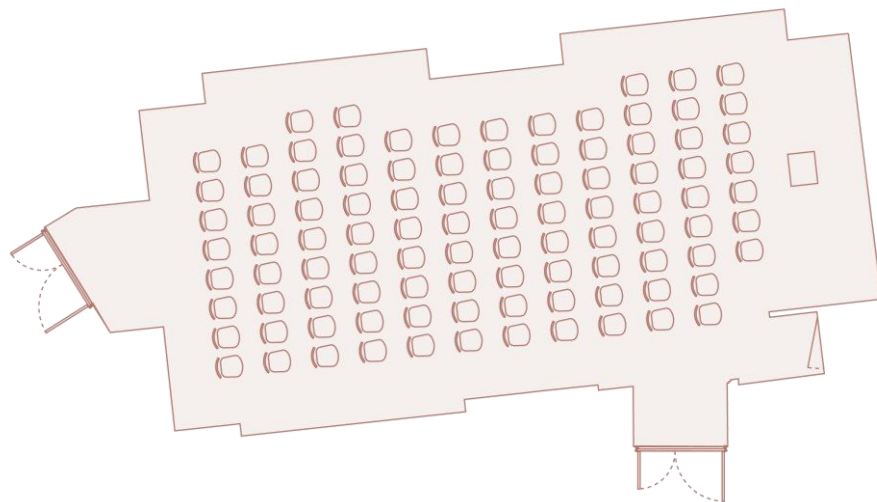
- General
- Reception
- Theatre
- Cabaret
- Classroom
- Banquet
- Conference
- U-Shape



AUGUSTE LUMIERE

FLOORPLAN

Theatre layout A + B



SPECIFICATIONS

Capacity: 100

Dimensions: 91m²

[MAIN MENU](#)

FLOOR PLAN

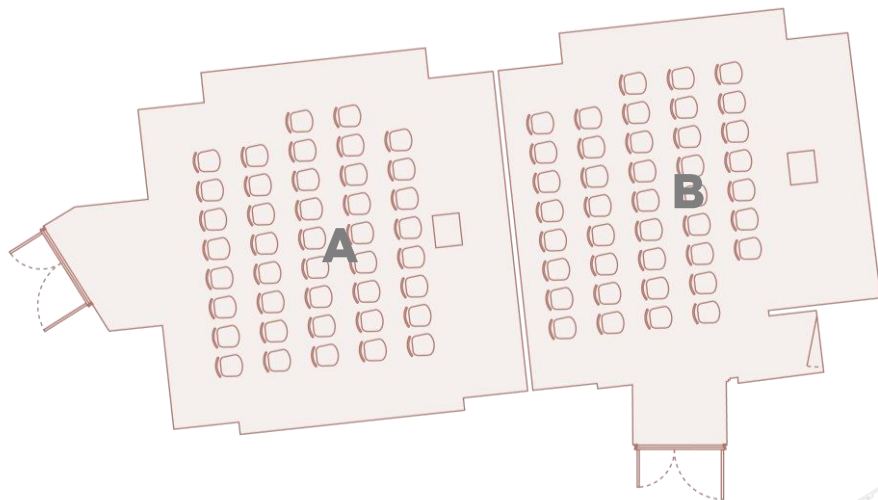
- General
- Reception
- Theatre
- Cabaret
- Classroom
- Banquet
- Conference
- U-Shape



AUGUSTE LUMIERE

FLOORPLAN

Theatre layout A OR B



SPECIFICATIONS

Capacity: 42 / 41

Dimensions: 45.6 / 45.6 m²

[MAIN MENU](#)

FLOOR PLAN

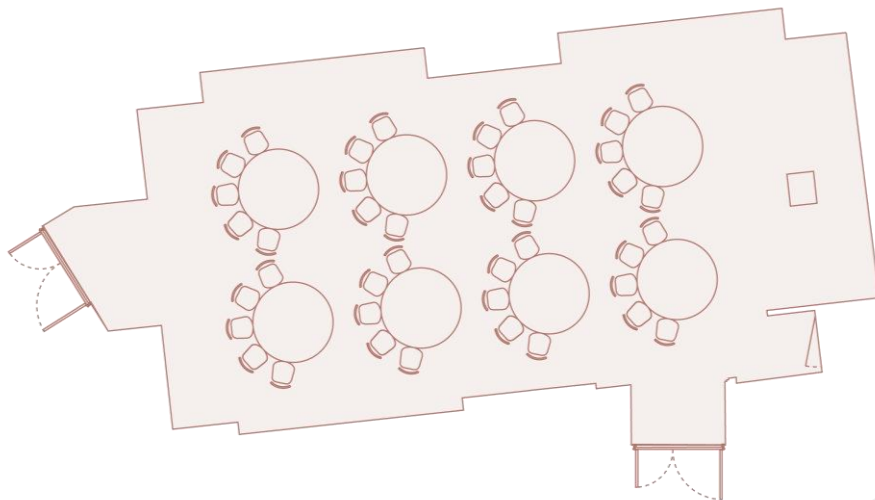
- General
- Reception
- Theatre
- Cabaret
- Classroom
- Banquet
- Conference
- U-Shape



AUGUSTE LUMIERE

FLOORPLAN

Cabaret layout A + B



SPECIFICATIONS

Capacity: 40

Dimensions: 91m²

[MAIN MENU](#)

FLOOR PLAN

- General
- Reception
- Theatre
- Cabaret
- Classroom
- Banquet
- Conference
- U-Shape

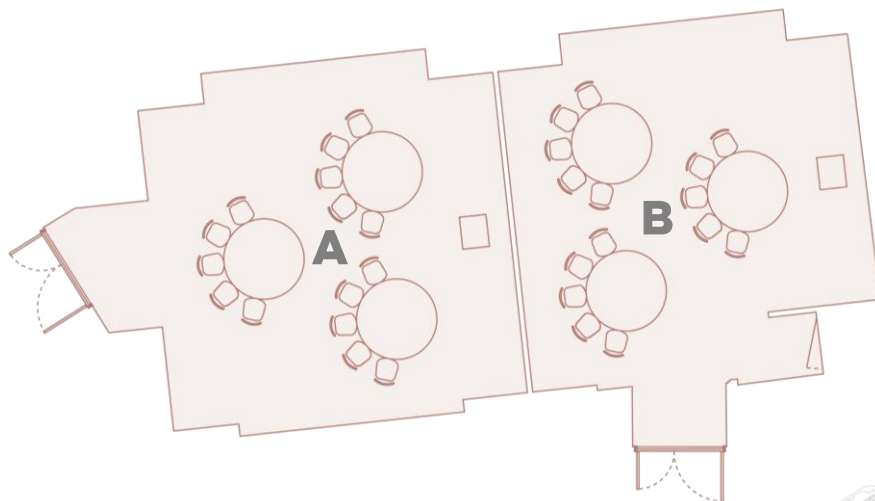


AUGUSTE LUMIERE

FLOORPLAN

Cabaret layout A OR B

FLOOR PLAN



- General
- Reception
- Theatre
- Cabaret
- Classroom
- Banquet
- Conference
- U-Shape

SPECIFICATIONS

Capacity: 15 / 15

Dimensions: 45.6 /45.6 m2

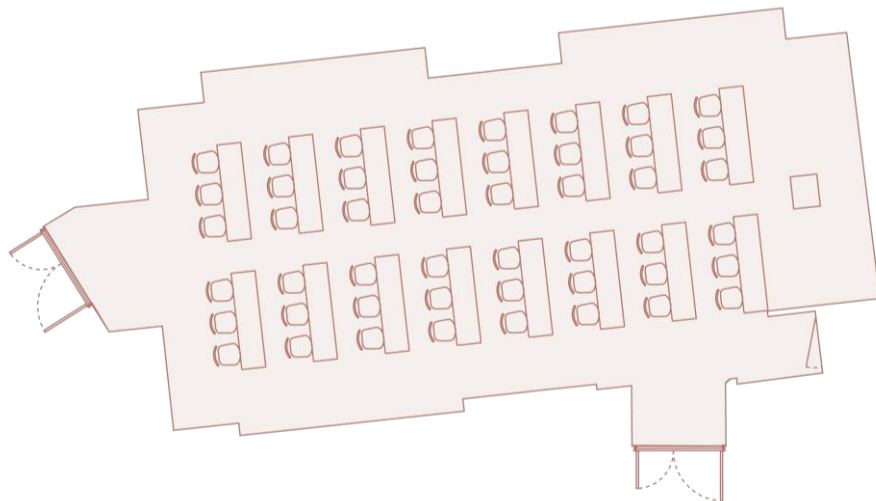


MAIN MENU

AUGUSTE LUMIERE

FLOORPLAN

Classroom layout



SPECIFICATIONS

Capacity: 48

Dimensions: 45.6 /45.6 m2

[MAIN MENU](#)

FLOOR PLAN

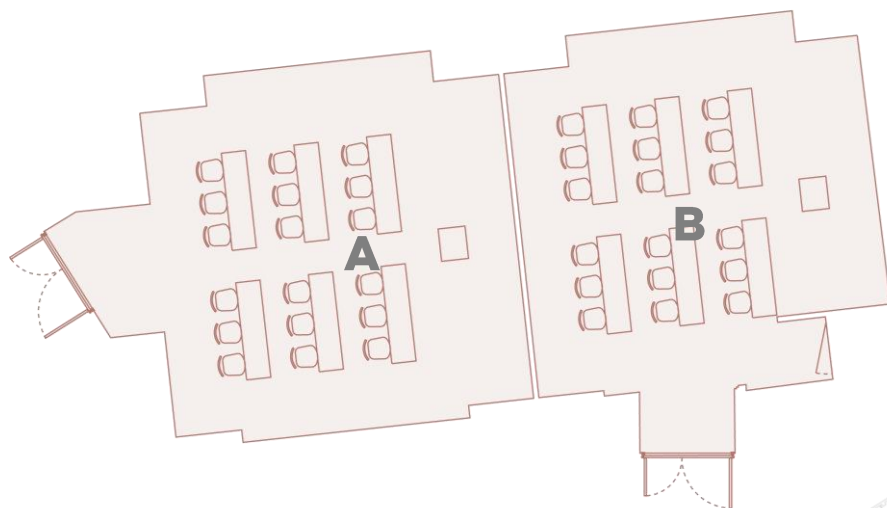
- General
- Reception
- Theatre
- Cabaret
- Classroom
- Banquet
- Conference
- U-Shape



AUGUSTE LUMIERE

FLOORPLAN

Classroom layout



SPECIFICATIONS

Capacity: 18 / 18

Dimensions: 45.6 / 45.6 m²

[MAIN MENU](#)

FLOOR PLAN

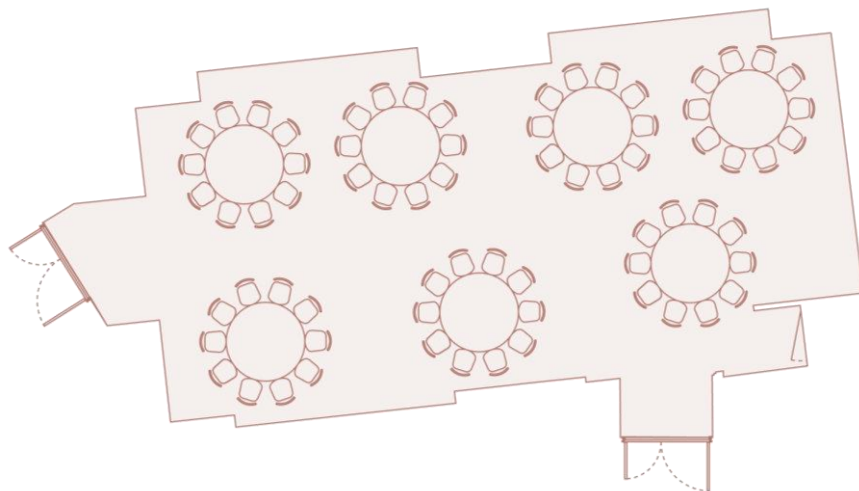
- General
- Reception
- Theatre
- Cabaret
- Classroom
- Banquet
- Conference
- U-Shape



AUGUSTE LUMIERE

FLOORPLAN

Banquet Rounds A + B



FLOOR PLAN

- General
- Reception
- Theatre
- Cabaret
- Classroom
- Banquet
- Conference
- U-Shape

SPECIFICATIONS

Capacity: 70

Dimensions: 91m²

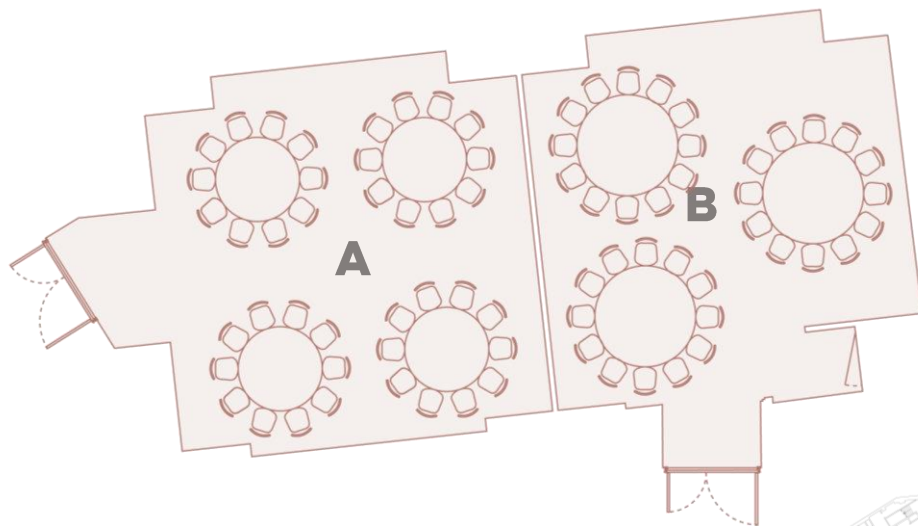
MAIN MENU



AUGUSTE LUMIERE

FLOORPLAN

Banquet Rounds A OR B



SPECIFICATIONS

Capacity: 40 / 30

Dimensions: 45.6 /45.6 m2

MAIN MENU

FLOOR PLAN

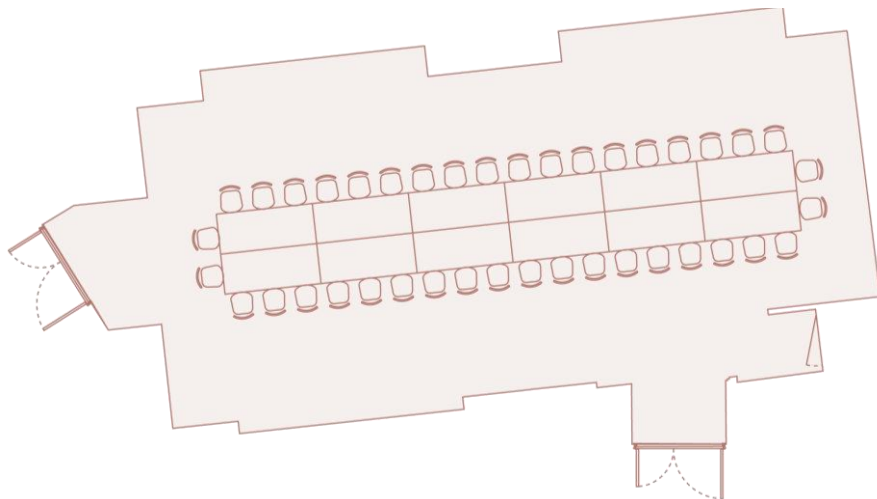
- General
- Reception
- Theatre
- Cabaret
- Classroom
- Banquet
- Conference
- U-Shape



AUGUSTE LUMIERE

FLOORPLAN

Conference layout A + B



SPECIFICATIONS

Capacity: 40

Dimensions: 91m²

MAIN MENU

FLOOR PLAN

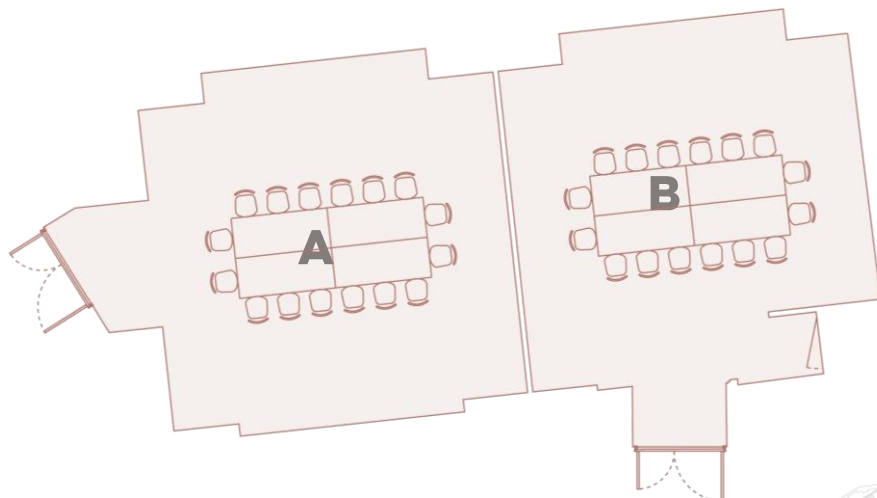
- General
- Reception
- Theatre
- Cabaret
- Classroom
- Banquet
- Conference
- U-Shape



AUGUSTE LUMIERE

FLOORPLAN

Conference Layout A OR B



SPECIFICATIONS

Capacity: 16 / 16

Dimensions: 45.6 / 45.6 m²

[MAIN MENU](#)

FLOOR PLAN

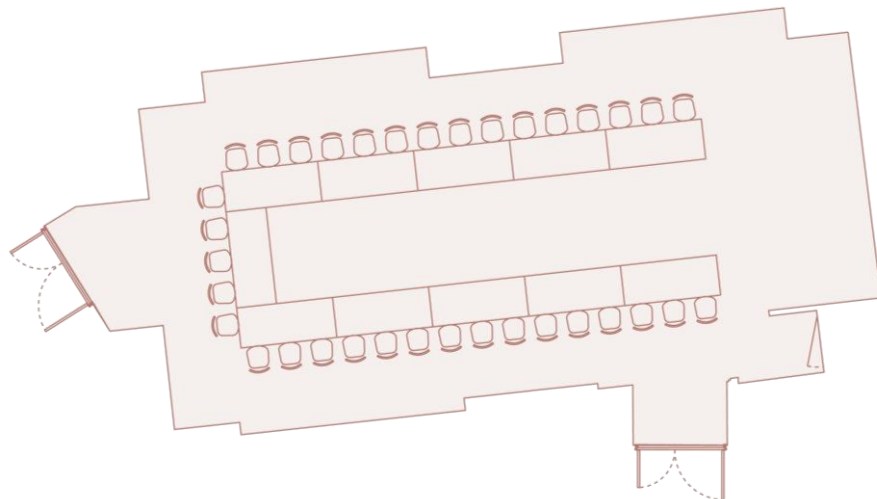
- General
- Reception
- Theatre
- Cabaret
- Classroom
- Banquet
- Conference
- U-Shape



AUGUSTE LUMIERE

FLOORPLAN

U-Shape Layout A + B



SPECIFICATIONS

Capacity: 35

Dimensions: 91m²

MAIN MENU

FLOOR PLAN

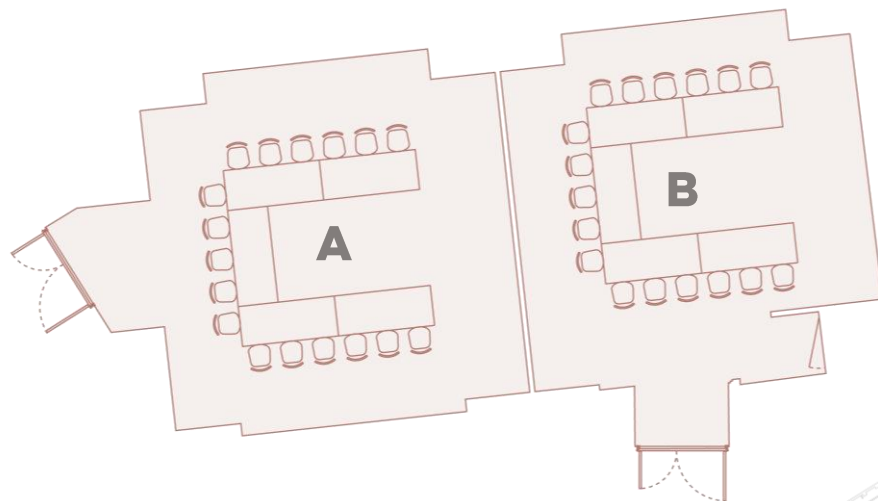
- General
- Reception
- Theatre
- Cabaret
- Classroom
- Banquet
- Conference
- U-Shape



AUGUSTE LUMIERE

FLOORPLAN

U-Shape Layout A OR B



SPECIFICATIONS

Capacity: 17 / 17

Dimensions: 45.6 /45.6 m2

[MAIN MENU](#)

FLOOR PLAN

- General
- Reception
- Theatre
- Cabaret
- Classroom
- Banquet
- Conference
- U-Shape



AUGUSTE LUMIERE

AUDIO VISUAL FEATURES

- Screen:-240 X 180
- Video projector (5000 lumens)
- Barco Click & Share
- USB connection for sharing documents ,enable presentations for PowerPoint, Excel, Word and PDF documents, photos on the room display from your computer
- Amplification with 4 Bose enceintes DM2S (puissance tbc)
- High speed and Wi-fi internet access
- Air conditioning

OVERVIEW

GALLERY

FLOORPLAN

FACILITIES



LOUIS LUMIÈRE

OVERVIEW

GALLERY FLOOR

FLOORPLAN

FACILITIES

LOUIS LUMIÈRE

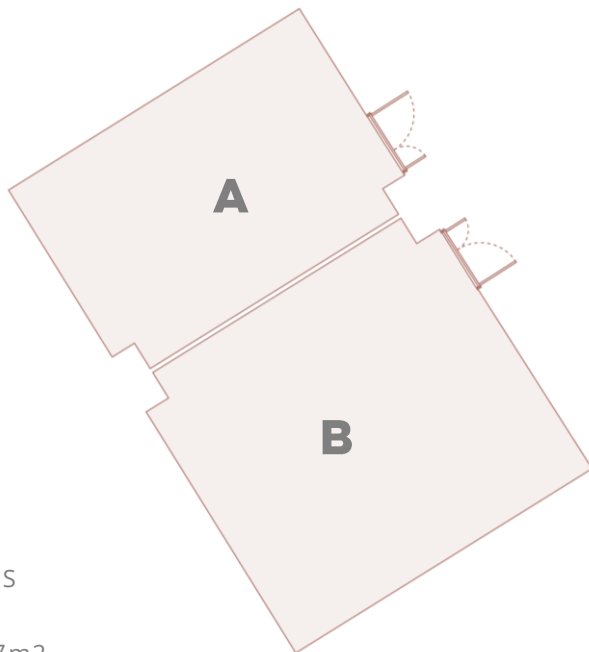
Lounge Louis Lumière is an excellent choice for conferences, fashion shows or road shows.

With 87m2 of unobstructed space you can host a dinner for up to 70 guests or divide the elegant spaces into two separate rooms.

LOUIS LUMIERE

FLOORPLAN

General Layout



SPECIFICATIONS

Capacity: 100

Dimensions: 87m²

[MAIN MENU](#)

FLOOR PLAN

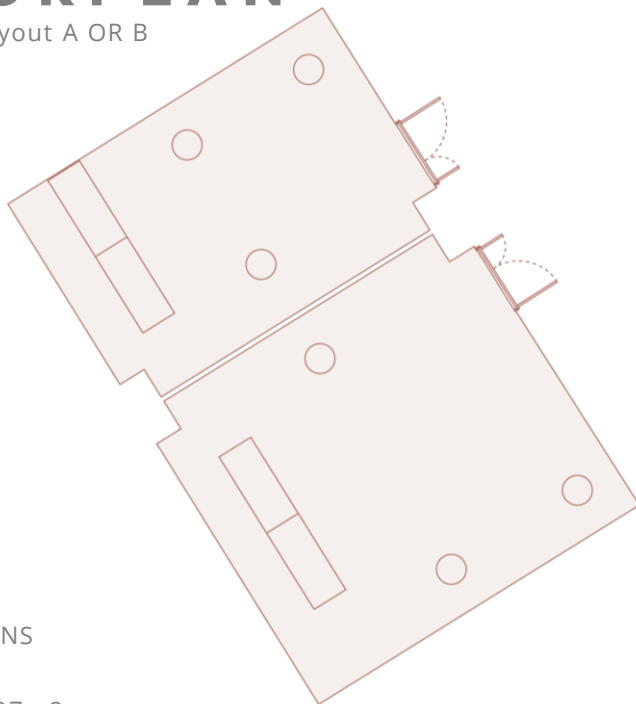
General
Reception
Theatre
Cabaret
Classroom
Banquet
Conference
U-Shape



LOUIS LUMIERE

FLOORPLAN

Reception Layout A OR B



SPECIFICATIONS

Capacity: 100

Dimensions: 87m²

[MAIN MENU](#)

FLOOR PLAN

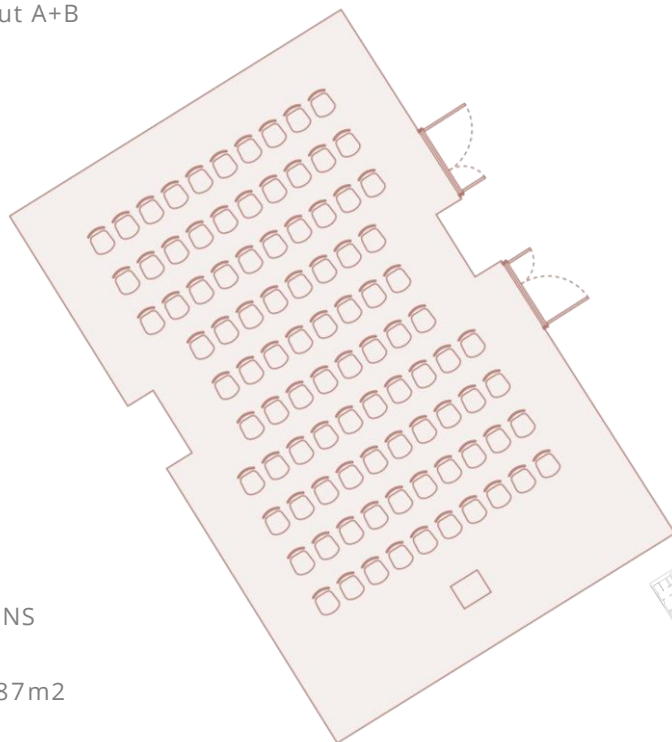
- General
- Reception
- Theatre
- Cabaret
- Classroom
- Banquet
- Conference
- U-Shape



LOUIS LUMIERE

FLOORPLAN

Theatre layout A+B



SPECIFICATIONS

Capacity: 94

Dimensions: 87m²

[MAIN MENU](#)

FLOOR PLAN

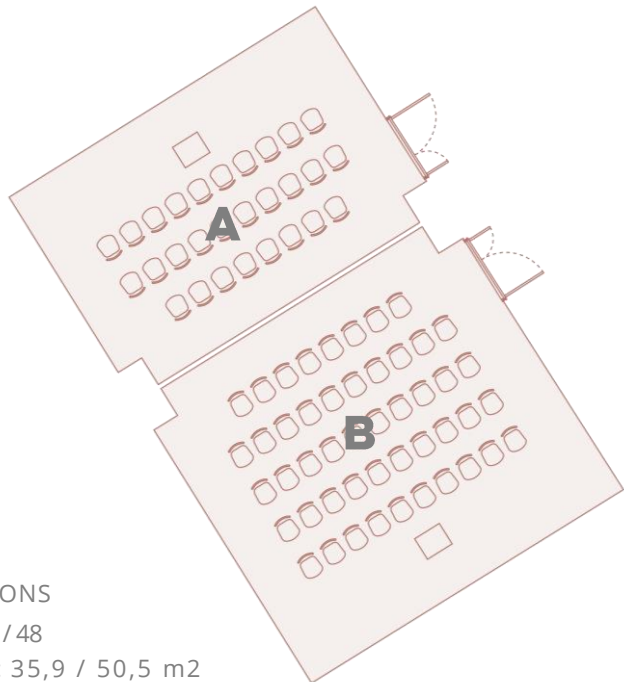
- General
- Reception
- Theatre
- Cabaret
- Classroom
- Banquet
- Conference
- U-Shape



LOUIS LUMIERE

FLOORPLAN

Theatre layout A OR B



SPECIFICATIONS

Capacity: 28 / 48

Dimensions: 35,9 / 50,5 m2

[MAIN MENU](#)

FLOOR PLAN

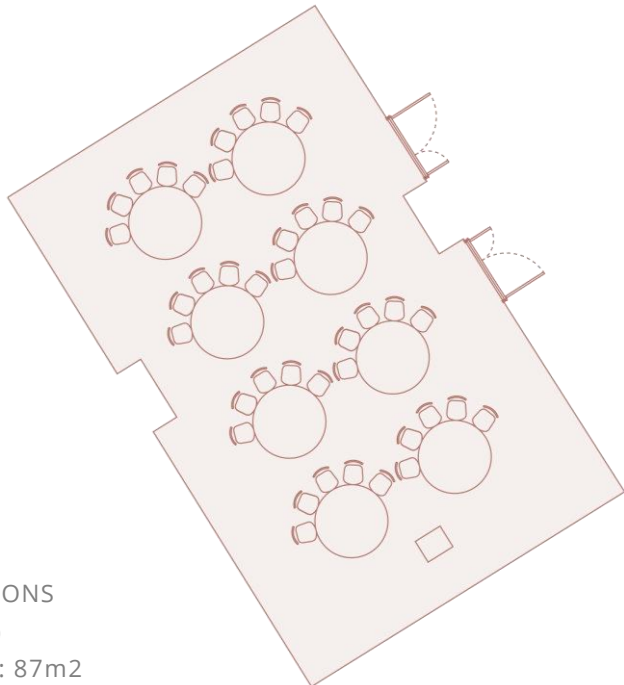
- General
- Reception
- Theatre
- Cabaret
- Classroom
- Banquet
- Conference
- U-Shape



LOUIS LUMIERE

FLOORPLAN

Cabaret layout A + B



SPECIFICATIONS

Capacity: 40

Dimensions: 87m²

[MAIN MENU](#)

FLOOR PLAN

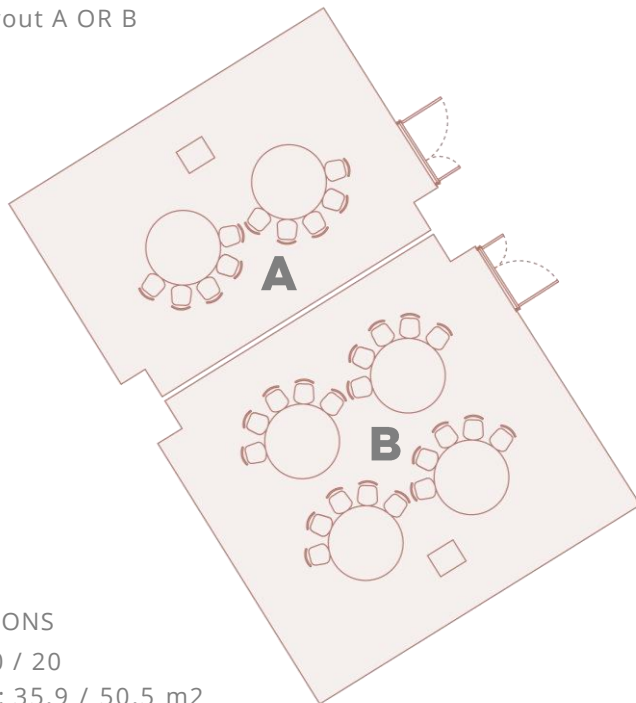
- General
- Reception
- Theatre
- Cabaret
- Classroom
- Banquet
- Conference
- U-Shape



LOUIS LUMIERE

FLOORPLAN

Cabaret layout A OR B



SPECIFICATIONS

Capacity: 10 / 20

Dimensions: 35,9 / 50,5 m2

[MAIN MENU](#)

FLOOR PLAN

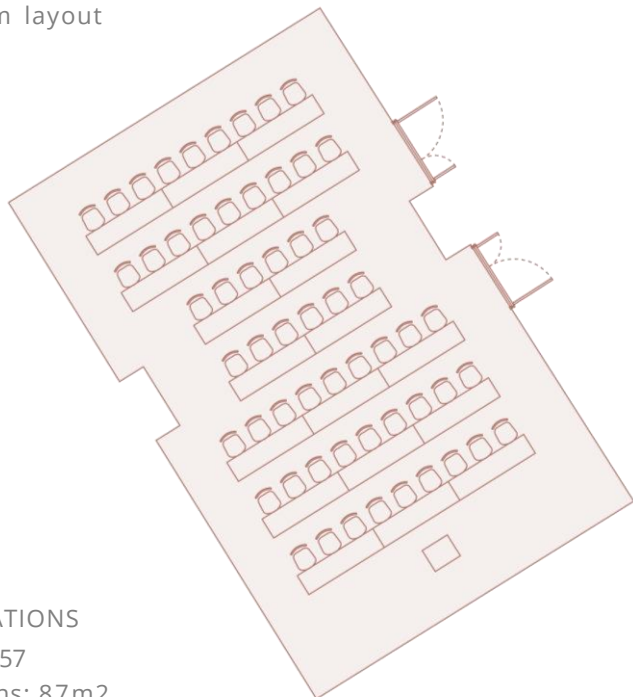
- General
- Reception
- Theatre
- Cabaret
- Classroom
- Banquet
- Conference
- U-Shape



LOUIS LUMIERE

FLOORPLAN

Classroom layout



SPECIFICATIONS

Capacity: 57

Dimensions: 87m²

[MAIN MENU](#)

FLOOR PLAN

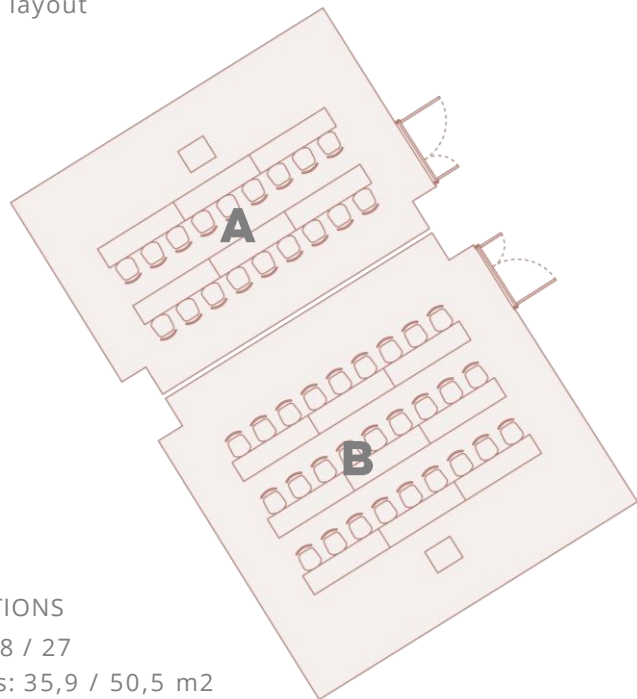
- General
- Reception
- Theatre
- Cabaret
- Classroom
- Banquet
- Conference
- U-Shape



LOUIS LUMIERE

FLOORPLAN

Classroom layout



SPECIFICATIONS

Capacity: 18 / 27

Dimensions: 35,9 / 50,5 m2

[MAIN MENU](#)

FLOOR PLAN

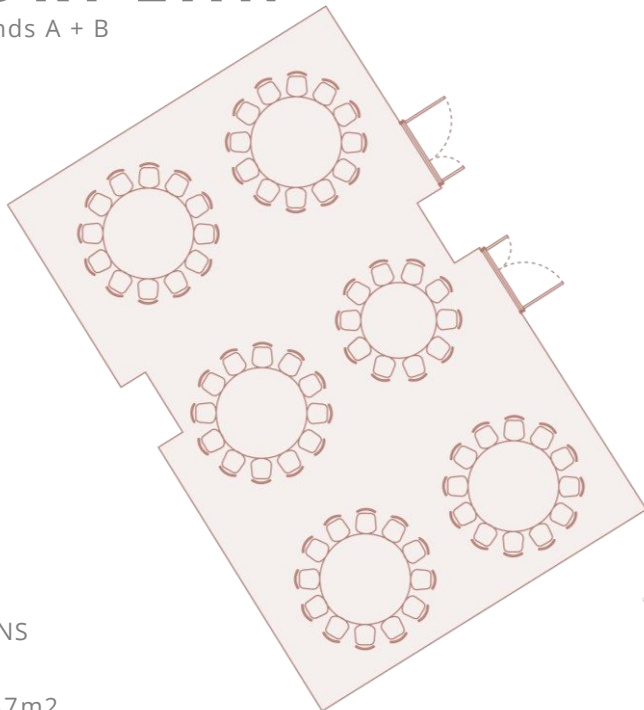
- General
- Reception
- Theatre
- Cabaret
- Classroom
- Banquet
- Conference
- U-Shape



LOUIS LUMIERE

FLOORPLAN

Banquet Rounds A + B



SPECIFICATIONS

Capacity: 70

Dimensions: 87m²

[MAIN MENU](#)

FLOOR PLAN

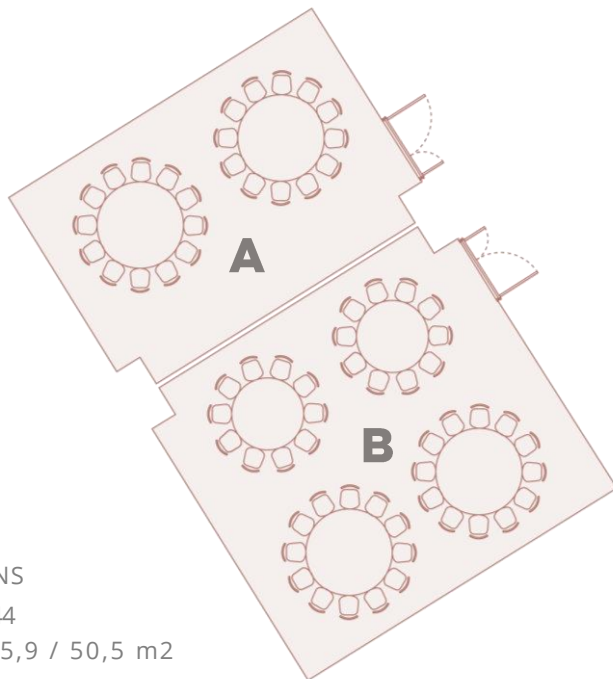
- General
- Reception
- Theatre
- Cabaret
- Classroom
- Banquet
- Conference
- U-Shape



LOUIS LUMIERE

FLOORPLAN

Banquet Rounds A OR B



SPECIFICATIONS

Capacity: 24 / 44

Dimensions: 35,9 / 50,5 m2

MAIN MENU

FLOOR PLAN

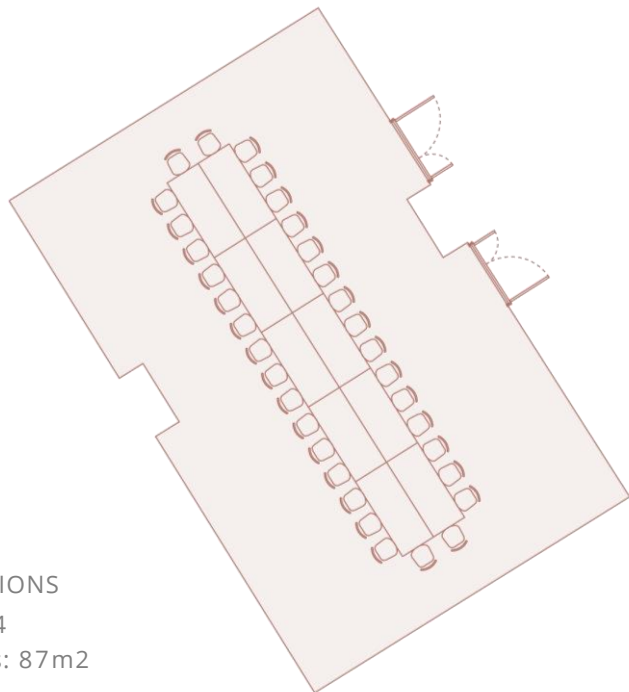
- General
- Reception
- Theatre
- Cabaret
- Classroom
- Banquet
- Conference
- U-Shape



LOUIS LUMIERE

FLOORPLAN

Conference layout A + B



SPECIFICATIONS

Capacity: 34

Dimensions: 87m²

[MAIN MENU](#)

FLOOR PLAN

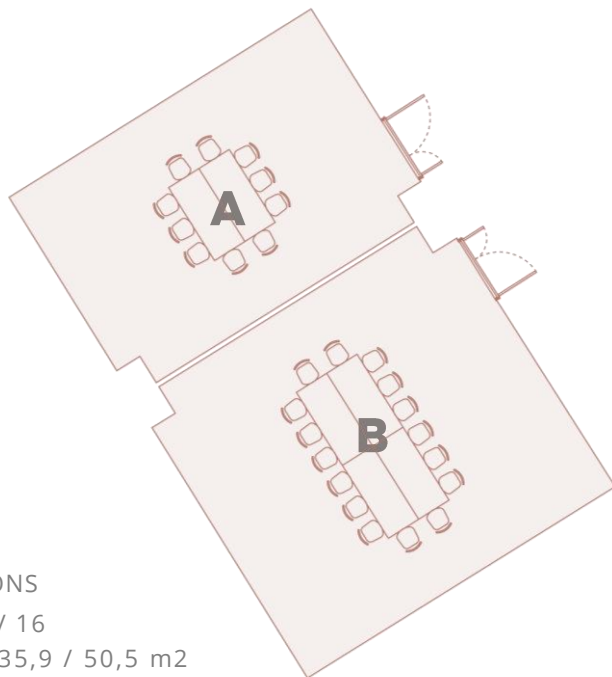
- General
- Reception
- Theatre
- Cabaret
- Classroom
- Banquet
- Conference
- U-Shape



LOUIS LUMIERE

FLOORPLAN

Conference Layout A OR B



SPECIFICATIONS

Capacity: 10 / 16

Dimensions: 35,9 / 50,5 m2

[MAIN MENU](#)

FLOOR PLAN

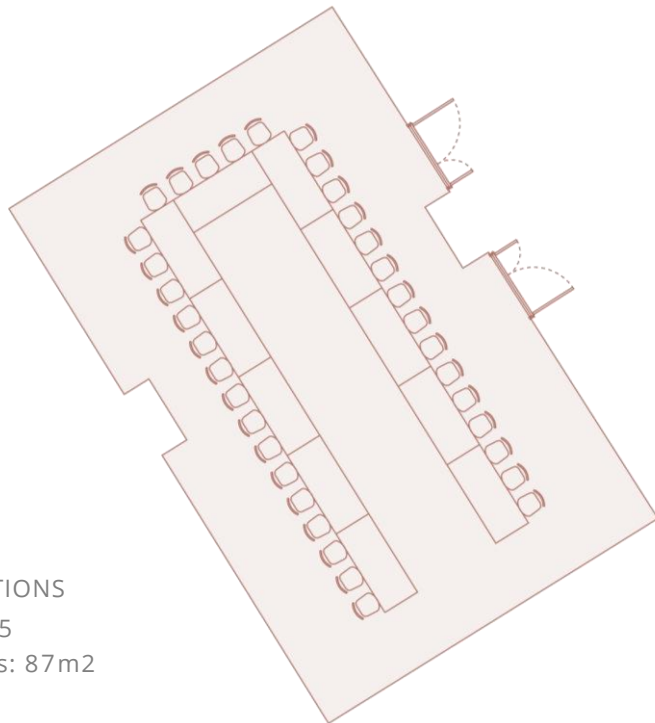
- General
- Reception
- Theatre
- Cabaret
- Classroom
- Banquet
- Conference
- U-Shape



LOUIS LUMIERE

FLOORPLAN

U-Shape layout A + B



SPECIFICATIONS

Capacity: 35

Dimensions: 87m²

MAIN MENU

FLOOR PLAN

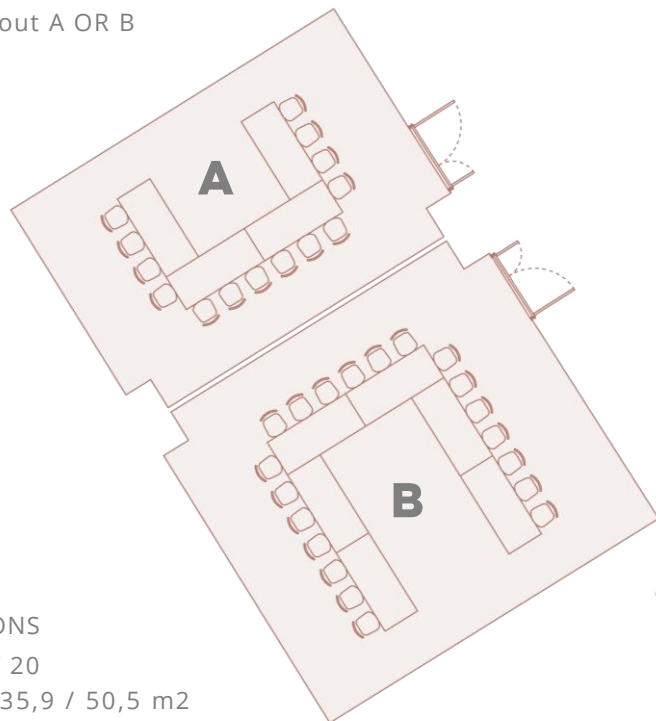
- General
- Reception
- Theatre
- Cabaret
- Classroom
- Banquet
- Conference
- U-Shape



LOUIS LUMIERE

FLOORPLAN

U-Shape Layout A OR B



SPECIFICATIONS

Capacity: 14 / 20

Dimensions: 35,9 / 50,5 m²

MAIN MENU

FLOOR PLAN

General
Reception
Theatre
Cabaret
Classroom
Banquet
Conference
U-Shape



LOUIS LUMIERE

AUDIO VISUAL FEATURES

- Screen:-240 X 180
- Video projector (5000 lumens)
- Barco Click & Share
- USB connection for sharing documents ,enable presentations for PowerPoint, Excel, Word and PDF documents, photos on the room display from your computer
- Amplification with 4 Bose enceintes DM2S (puissance tbc)
- High speed and Wi-fi internet access
- Air conditioning

OVERVIEW

GALLERY

FLOORPLAN

FACILITIES

FOYER

OVERVIEW

GALLERY

FLOOR PLAN

FACILITIES

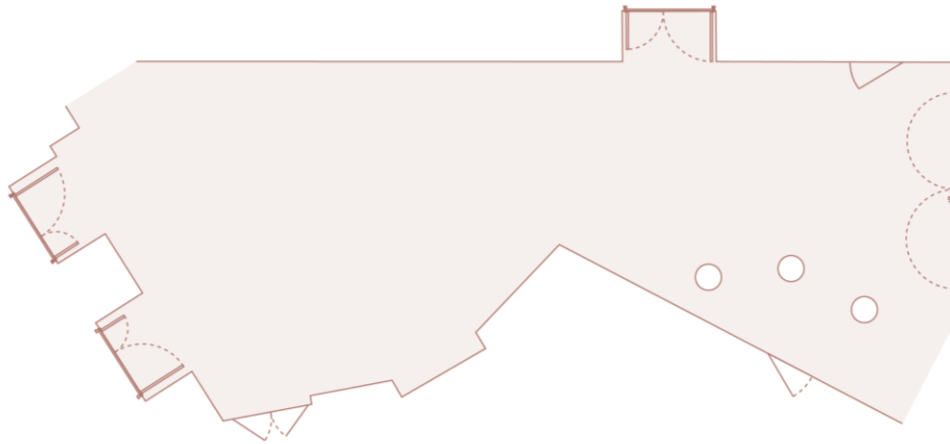
FOYER

The ideal setting for a reception. Your guests can enjoy the decor and the numerous art pieces honoring the brothers Lumiere who hosted the first movie projection in this very same space in 1895.

FOYER

FLOORPLAN

General Layout



FLOOR PLAN

General
Reception

SPECIFICATIONS

Capacity: 100

Dimensions: 91m²

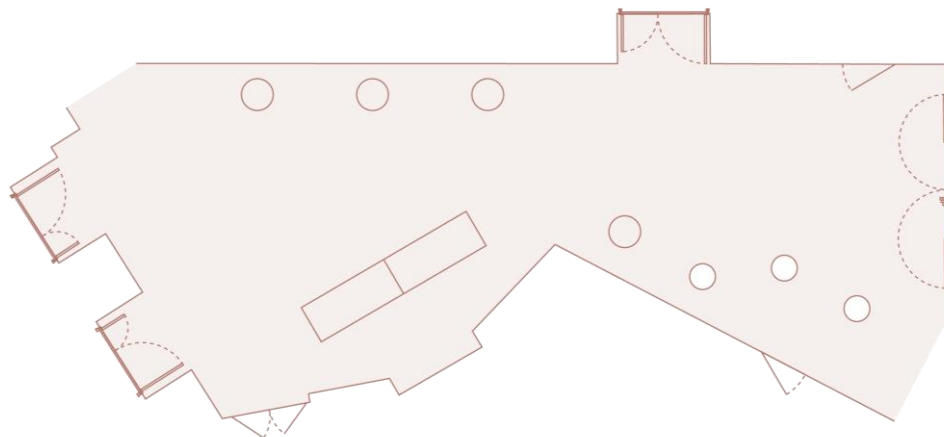


MAIN MENU

FOYER

FLOORPLAN

Reception Layout



FLOOR PLAN

General
Reception

SPECIFICATIONS

Capacity: 100

Dimensions: 91m²

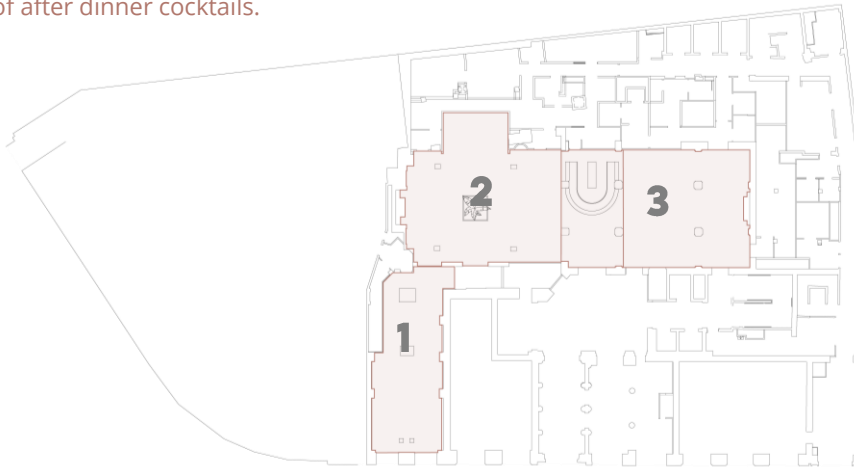


MAIN MENU

MAGNIFIQUE EVENTS

Choose from one of our spectacular venues to host your event. Entertain, network, during a standing reception in the gallery before proceeding to dinner in the romantic and soothing atmosphere of our restaurant. Having a great time and want to treat your guests a little longer? Make your way to the lounge where our expert mixologist will delight your palate with a variety of after dinner cocktails.

1. GALERIE DES NOUVELLES IMAGES
2. LE RESTAURANT
3. LE BAR LOUNGE



MAIN MENU

GALERIE DES NOUVELLES IMAGES



OVERVIEW

GALLERY

FLOORPLAN

GALERIE DES NOUVELLES IMAGES

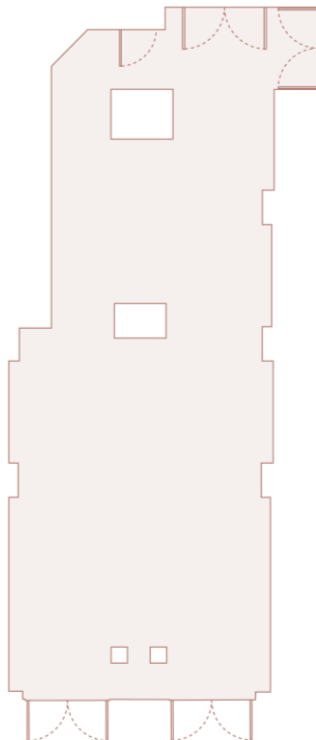
A trendy space in the centre of Paris for private events. The Galerie has a street entrance and opens on to the hotel restaurant.

From the edgiest, most avant-garde cocktail parties to personal appearances by artists, La Galerie is the choice for anyone who loves creative talent and style.

FOYER

FLOORPLAN

General Layout



SPECIFICATIONS

Capacity: 65

Dimensions: 83m²

[MAIN MENU](#)

FLOOR PLAN

General

Reception

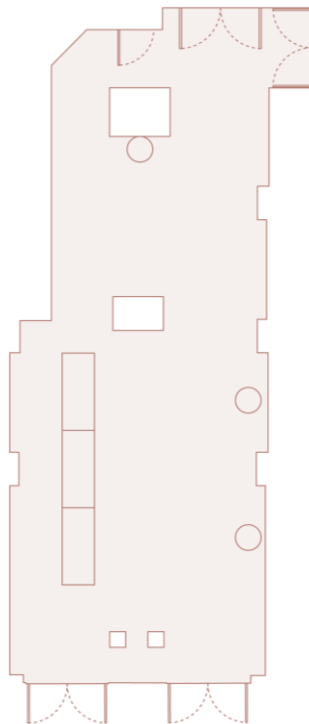
Conference



FOYER

FLOORPLAN

General Layout



SPECIFICATIONS

Capacity: 65

Dimensions: 83m²

[MAIN MENU](#)

FLOOR PLAN

General

Reception

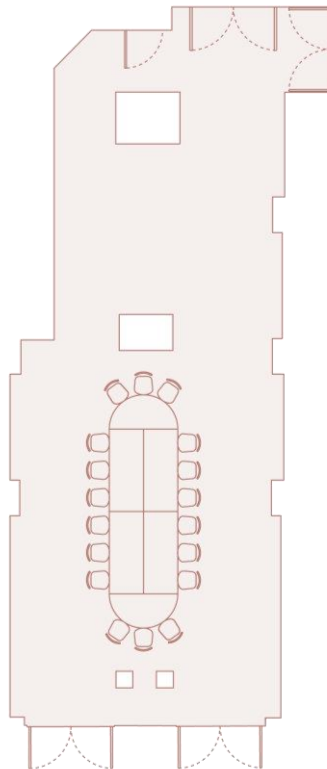
Conference



FOYER

FLOORPLAN

General Layout



SPECIFICATIONS

Capacity: 65

Dimensions: 83m²

MAIN MENU

FLOOR PLAN

General

Reception

Conference



LE RESTAURANT DU SCRIBE



OVERVIEW

GALLERY FLOOR

FLOORPLAN

FACILITIES



LE RESTAURANT DU SCRIBE

In a poetic and contemporary venue, the restaurant's gastronomy follows the Scribe's culinary tradition, using the finest products and presenting them in ways that never fail to astonish. Available for group for up to 60 people our Executive Chef will be sure to create menus that will astonish your guests.

LE BAR & LOUNGE DU SCRIBE



OVERVIEW

GALLERY FLOOR

FLOORPLAN

FACILITIES










LE BAR & LOUNGE

Reinvented with the Club spirit in mind by the designer, Tristan Auer, the bar welcomes you upon arrival at 1, rue Scribe.

The bar beats to the rhythm of the capital during the day, and in the evening, in a cozy candlelight ambiance,

our mixology experts invite you to relax away from the hustle and bustle of the city with our retro and stunning cocktails.

CAPACITY CHART

MEETING ROOM	DIMENSIONS M.	SURFACE M ²	THEATER	U-SHAPE	BOARDROOM	CLASSROOM	BANQUETTING	COCKTAIL	CABARET
									
AUGUSTE LUMIERE	6,8 x 13,4	91,1	100	35	40	48	70	100	40
AUGUSTE LUMIERE a	6,8x6,7	45,6	42	17	16	18	40	40	15
AUGUSTE LUMIERE b	6,8x6,7	45,6	41	17	16	18	36	40	15
LOUIS LUMIERE	11,8 x 7,5	87,2	94	35	34	57	70	100	40
LOUIS LUMIERE a	7,5x4,9	35,9	28	14	10	18	24	40	10
LOUIS LUMIERE b	7,5x6,9	50,5	48	20	16	27	44	80	20
FOYER	16,5 x 5,95	91	/	/	/	/	/	100	/
SALON 1895	9,9 x 20,3	170,3	149	/	/	/	102	200	/
SALON 1895 a	9x11,1	85,3	89	23	28	42	58	70	35
SALON 1895 b	9,9x9,1	84,7	60	23	22	/	44	80	/
GALERIE	15,2 x 5,99	83,4	/	/	/	/	18	65	/

WELLNESS

WELLNESS & HAMMAM by Keiraõ Spa

Designed for soothing beauty treatments, the skincare approach of Wellness by Keiraõ Spa includes naturopathy and alternative medicine. Protocols have been reviewed by therapists and based on Organic and 100% natural products.

- Wellness by Keiraõ Spa includes 2 treatment rooms with a duo facility • Fitness area features a full range of state-of-the-art equipment.



FOOD AND DRINK

RESTAURANT BAR & CAFÉ

Enjoy a mouthwatering culinary experience paired with our heartwarming service, right here, in the center of Paris. Impressive venues, delicious treats await at any of our restaurant, bar or café

Restaurant Savor the classics of French cuisine with a Mediterranean flair

Bar Du Scribe Relax away from the hustle and bustle of the city with our retro and stunning cocktails

Café Scribe Welcomes experts of coffee and tea, and lovers of sweet pastries in the sophisticated boutique



SUSTAINABILITY

Green day delegate offer

Including meeting room with recycle note pad and pencil,
A morning detox break and afternoon break
Lunch with local product and organic bread.

In room reward

instead of having a VIP treatment select from listed association a donation .

Food and Beverage

Natural and biodynamic wines
Gluten-free, lactose-free, sugar-free diet
Vegetable milks: soybeans, oats, hazelnuts, almonds, coconuts,
Exit refined sugar: alternative and more natural sugars: honey,
agave syrup, coconut sugar
Smart foods, vegetable proteins: chickpeas, quinoa, lentils
Straws have been removed from restaurants and bars. On request,
customers have cardboard straw

Guestroom product

Cotton swabs in bamboo
Rooms are cleaned using a dry steam system
Soaps are recycled by the UNISOAP and sent to countries in need.
For stays longer than one night, customers are encouraged to
keep their sheets and towels.
The coffee are biodegradable.



Planet 21

Read more about the [AccorHotels sustainability programme Planet 21](#).

ACCOMMODATION AND FACILITIES



ROOMS & SUITES

- 162 rooms from Superior to Luxury Premium
- 39 suites from Junior Suite to Duplex

Distinctive features • A 19th century Haussmann building • Ultimate Parisian residence atmosphere by designer Tristan Auer

Features and amenities • Fireplace in all rooms and Suites • Large open wardrobe • Chromecast • Mini bar including gluten free options • UK and US plugs • Sofitel MyBed™

Live in Paris like at home. Inspired by the Haussmann apartments with ideal dimensions to welcome you, the rooms and suites are the perfect way to live in Paris like home with your family and friends

Each bedroom offer a dressing room designed in reference to the universe of luxury and shopping of the neighborhood.



ALL MEETING PLANNER

PERFECT EVENTS. PERFECTLY REWARDED.

Join the ALL Meeting Planner and earn points every time you organise an event. Book workspaces wherever you need, whenever you want. 2,400 hotels across the world, from luxury to budget-friendly.

- 2 euros spent = 1 Rewards point
- Finance future events using your points. Or use them for your next trip, for concert tickets, or a match. Your points, your choice.
- Sharing points
- There are no blackout dates on Rewards points. Use them whenever you choose.
- There are no expiry dates on your points. No rush, no fuss.
- Free membership



MEETINGS
& EVENTS

CONTACT US

NEARBY

Famous sites Opera Garnier, Place Vendôme, Grands Boulevards and exclusive department stores

Museums Louvre, Art Décoratifs, Grand Palais

Entertainment The Olympia hall, the Grand Rex, Edouard VII Theater

TRANSPORTS

Metro Opera, Madeleine, Havre Caumartin Metro Stations

RER A Auber Station

AIRPORT Roissy CDC International Airport
by Roissybus Opéra Station (50 m)



CONTACT OUR CONFERENCE AND EVENTS TEAM

+330144712484

delphine.peyron@sofitel.com

1 RUE SCRIBE

75009 PARIS.