

LIVE THE FRENCH WAY



S O F I T E L

DUBAI THE PALM

BIENVENUE!

HOTEL
FEATURES

CULINARY
DELIGHTS

MEETINGS
& EVENTS

WELLNESS
& RECREATION

CONTACT US



DISCOVER DUBAI

The United Arab Emirates' most populous city is Dubai. It is a thriving metropolis on the Arabian Gulf that serves as a true melting pot for many cultures from all over the world. This fast-paced city is known for its superstructure-filled skyline dominated by the prestigious Burj Khalifa, currently the world's tallest tower and a global icon of over 828 meters high. It is well known for its luxury shopping, ultramodern architecture, and penchant for delivering world firsts.

Visitors are warmly welcomed by the local Emiratis, renowned for their warm hospitality and rich cultural heritage. Blessed all year round with golden sunshine, beautiful beaches, intriguing deserts, luxurious hotels and a plethora of must-see attractions, Dubai happily hosts millions of international leisure and business tourists each year.





STEP ONTO PALM JUMEIRAH

The pulsating city of Dubai is a unique blend of East and West, the ancient and the modern, along with endless desert and golden beaches. Sofitel Dubai The Palm is located on the East Crescent of the iconic Palm Jumeirah, the world's most popular man-made island shaped in the form of a palm tree.

Closely situated yet away from the bustling city, the resort is located just 30 minutes from the Dubai International Airport (DXB) and Al Maktoum International Airport (DWC). It is also conveniently located near some of the city's most exciting attractions.



HOTEL FEATURES



LIVE THE EXPERIENCE

The resort sprawls over a long private beach on the East Crescent with magnifique touches of French elegance interlaced throughout the property invites guests to “Live the French way” and indulge in excellence. With an abundance of stunning organic architecture and lush vertical gardens, the property graciously reflects south pacific tropical allure. The hotel offers a large variety of dining options with 7 restaurants, 5 bars, and lounges.

Indulge in one of our luxurious private villas or delight in the airy atmosphere of 360 contemporary guest rooms and suites. For extended stays, choose from the 182 serviced apartments featuring large balconies and gorgeous sea views or palm views.





ACCOMMODATION

Merging understated luxury with endless comfort, guests can treat themselves to any of our elegantly-appointed guest rooms, suites & apartments. Offering inspiring views of the lush gardens, the Arabian Gulf or the Palm Jumeirah with the Dubai skyline as a back drop, all guest rooms, suites, villas, and apartments showcase onyx laden bathroom features, L'Occitane bathroom amenities and the extra plush Sofitel's MyBed™ exclusive bedding concept featuring an all-feather bed and extra light down duvet.

ROOMS & SUITES

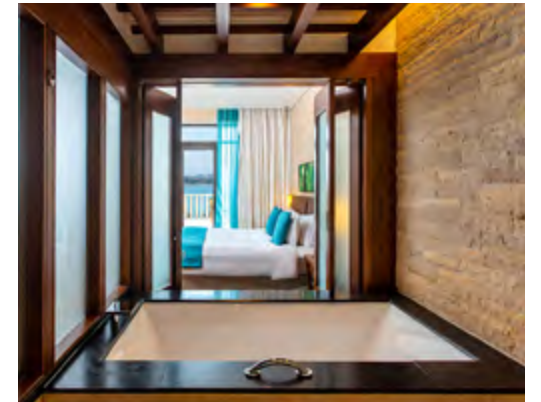


LUXURY ROOM

- Maximum occupancy: 2 adults and 1 infant
- 44 sqm (475 sq ft)
- Two twin or one king-size Sofitel MyBed™
- Private balcony with Arabian Sea or Palm Jumeirah view
- Bathtub and separate rain shower
- L'Occitane bathroom amenities
- Bose Wave audio system
- Complimentary high-speed WiFi

CLASSIC ROOM

- Maximum occupancy: 2 adults and 1 infant
- 44 sqm (475 sq ft)
- Two twin or one king-size Sofitel MyBed™
- Private balcony with Arabian Sea or Palm Jumeirah view
- Bathtub and separate rain shower
- L'Occitane bathroom amenities
- Bose Wave audio system
- Complimentary high-speed WiFi



ROOMS & SUITES

JUNIOR SUITE

- Maximum occupancy: 2 adults and 2 children
- 60 sqm (650 sq ft)
- King-size Sofitel MyBed™
- Sofa-bed in separate living room
- Private balcony with Arabian Sea or Palm Jumeirah view
- Freestanding bathtub and separate walk-in rain shower
- L'Occitane bathroom amenities
- Access to The Premier Lounge
- Bose Wave audio system
- Complimentary high-speed WiFi
- Nespresso coffee machine and capsules



PRESTIGE SUITE

- Maximum occupancy: 2 adults and 2 children
- 85 sqm (915 sq ft)
- King-size Sofitel MyBed™
- Separate living room with sofa bed and open plan dining area
- Large Private balcony with Arabian Sea or Palm Jumeirah view
- Freestanding bathtub and separate walk-in rain shower
- L'Occitane bathroom amenities
- Access to The Premier Lounge
- Bose Wave audio system
- Complimentary high-speed WiFi
- Nespresso coffee machine and capsules



ROOMS & SUITES

OPERA SUITE

- Maximum occupancy: 4 adults and 1 child
- 125 sqm (1,345 sq ft)
- Two bedroom suite with two King size Sofitel MyBed™
- Large Private balcony with Sea view
- Separate living room with three-seater sofa and dining area
- Two freestanding bathtubs and separate walk-in rain showers
- L'Occitane bathroom amenities
- Access to The Premier Lounge
- Bose Wave audio system
- Complimentary high-speed WiFi
- Nespresso coffee machine and capsules



APARTMENTS

ONE BEDROOM APARTMENT

- Maximum occupancy: 2 adults and 2 children
- 85 sqm (915 sq ft)
- King-size Sofitel MyBed™
- Living room with sofa bed
- Large Private balcony with Sea view or Resort view
- Freestanding bathtub and separate walk-in rain shower
- Fully equipped kitchen
- L'Occitane bathroom amenities
- Bose Wave audio system
- Complimentary high-speed WiFi



TWO BEDROOM APARTMENT

- Maximum occupancy: 4 adults and 1 child
- 135 sqm (1,450 sq ft)
- Living room with sofa bed
- One bedroom with king and 1 bedroom with twin Sofitel MyBed™
- Large private balcony with Sea view or Resort view
- Freestanding bathtub and separate walk-in rain shower
- Fully equipped kitchen
- L'Occitane bathroom amenities
- Bose Wave audio system
- Complimentary high-speed WiFi



SIGNATURE PALM SUITES

A much-anticipated honeymoon, a special anniversary or a romantic getaway. Whatever the occasion, your journey of personalised luxury and exquisite art de vivre starts the moment you arrive, with a check-in area exclusive to Signature Palm Suite guests and 24-hour butler service. Unwind on the dedicated adult friendly beach overlooking Dubai's magnificent skyline as you tailor your perfect stay from our thoughtful menu of signature experiences.

- The Premier Lounge access
- 24-hours butler service
- Complimentary Sofitel SPA with L'Occitane facilities access
- Complimentary access to Sofitel FITNESS
- Master bedroom with four-poster bed
- Living room with sofa bed and open plan dining area
- Freestanding bathtub and separate walk-in rain shower
- Large private balcony with sea or garden view
- Sofa-bed in separate living room
- L'Occitane bathroom amenities
- Adult friendly private beach area
- Dedicated check-in area



SIGNATURE VILLAS

Each of the four villas at Sofitel Dubai The Palm Signature Collection is a singular expression of elegance, prestige and singular French joie de vivre. Arrive at your private entrance, nestled in the secluded tranquillity of our lush gardens. Immerse yourself in the grandeur of your opulent master bedroom, separate dining room and spectacular cinema. Then allow your butler to take care of all the details as you unwind in your outdoor pool or relax with friends in your spacious lounge and bar.

- The Premier Lounge access
- Dedicated butler at your service 24-hours
- Complimentary Sofitel SPA with L'Occitane facilities access
- Complimentary access to Sofitel FITNESS
- Spacious living room
- Dining room
- Private outdoor pool & jacuzzi
- Private cinema room and gym
- Private outdoor BBQ and dining area
- Dedicated private beach area
- Spacious garden area
- Hermès bathroom amenities
- Private entrance & private parking



The Premier Lounge

THE PREMIER LOUNGE

Enjoy all-day access to exclusive benefits, comfortable indoor and al-fresco lounging and unparalleled service at our newest signature venue The Premier Lounge.

- Complimentary Breakfast
- Complimentary Le Goûter (Afternoon Tea)
- Complimentary Apéro Chic (Happy Hours)
- Complimentary all-day refreshments
- Express Check-in and Check-out
- Late Check-out (subject to availability)
- Personalised Concierge Services

Timings: 6:30am – 11pm

CULINARY DELIGHTS



THE TASTE OF BON GOÛT

Synonymous with the French art de vivre, culinary excellence is one of the cornerstones of the Sofitel experience. Sofitel Dubai The Palm is no exception with 7 restaurants, 5 bars and lounges combining to present a truly international flavour and celebrate food with a French touch.





Laguna Beach Taverna & Lounge

Beach Taverna is an exquisite Palm Jumeirah restaurant featuring Mediterranean cuisine



Porterhouse Steaks & Grills

Modern steakhouse with classic elegance and star-lit dining



Moana Seafood Restaurant

Seafood with Latin American flavours



Hong Loong

Pan-Asian fusion food with influences from South East Asia

S O F I T E L

DUBAI THE PALM

BIENVENUE!

HOTEL
FEATURES

CULINARY
DELIGHTS

MEETINGS
& EVENTS

WELLNESS
& RECREATION

CONTACT US

TASTE OF BON GOUT

RESTAURANTS

SOCIALISING

BARS AND LOUNGES



Manava Restaurant

Scrumptious international buffet spread
serving breakfast and dinner



Maui Beach Restaurant & Bar

Pool and Beachfront al fresco



The World Eatery

Exquisite flavours from around the world

MAUI CONCEPTS

ZOYA BY MAUI

Indian cuisine concept served every evening

POOL BAR

Cocktails and fresh fruit juices by the pool or beach front

FOOD TRUCK

Selection of bites parked closer to you

GRAB & GO

Snacks on the go

ICE CREAM KIOSK

A children's and child at heart's sweet paradise



CHILL & HAVE FUN

Varying from lively to laid back, relaxing and socialising is always an option at any hour of the day. Refresh with a glass of cocktail or fresh juice by the pool or beachfront, while connoisseurs taste old and new world wines in rustic or chill-out setting. Enjoy the irresistible scent of fresh coffee, chocolate and French pastries at the lobby lounge. Sample the fragrant flavours of shisha in a soothing ambiance on the outdoor terrace with incredible views of Palm Jumeirah and Marina skyline.

**Laguna Beach Taverna & Lounge**

Elegant adults only beachside lounge with chill-out tunes, classy sundowners and sumptuous cuisine

**Olivier's**

Irresistible scent of fresh coffee, chocolate and French pastries

**Porterhouse Bar**

Lively, trendy vibes for pre-dinner Apéritif

**Replay**

Rustic interiors and brick walls with wide screens broadcasting your favourite games live in action



MEETINGS & EVENTS



BESPOKE CHOICES

With a wide selection of meeting rooms and an elegant ballroom, Sofitel Dubai The Palm is the premier destination for corporate and private entertaining. Our dedicated Inspired Meetings planners will work meticulously to create the perfect environment for our guests, blending French flair with local style for a high impact event.





INDOOR

Make your business event or personal celebration even more magnifique. Sofitel Dubai The Palm offers nine exceptional meeting rooms and an elegant ballroom for conferences, corporate events, private entertaining and team-building activities.

- Nine meeting rooms with five boasting natural daylight
- Ballroom accommodating up to 700 guests
- Dedicated entrance to the conference center
- State of the art sound and video systems
- Dedicated Magnifique Meeting Planners
- Full service business center
- Direct access to all-day dining restaurant
- High speed wireless internet throughout the resort
- ALL Connect Hybrid meetings solution
- Dedicated AV Technical team available during your event

OUTDOOR

Our magnifique lush gardens offer endless possibilities and the perfect backdrop for outdoor events. The immaculate grounds cater to fairytale tea parties, picnics with an idyllic island feel, romantic cabana dinners by the beach or barbecues on the carpeted lawn. Whatever it is that you require, our dedicated Inspired Meetings planners will endeavour to make every aspect of your event a success.

- Palm View Garden
- Maui Terrace
- Moana Terrace
- Porterhouse Terrace
- Palm Villa Garden
- Palm Suite Terrace
- Beach Cabanas





WEDDINGS

Begin your lifelong journey in the midst of romance and a luxurious Polynesian setting. With a variety of elegant indoor and outdoor solutions, finding a venue for life's most treasured moment is the easiest of choices. Whether it's an intimate gathering or an extravagant celebration within a stunning garden setting or a traditional indoor event, every detail of your celebration will be arranged beautifully.

- Pre-event functions
- Décor including table settings, theming
- Ceremonial wedding cake
- Bespoke menu creations
- Sound, lights and live entertainment
- Photographic memories
- Bridal beauty treatments

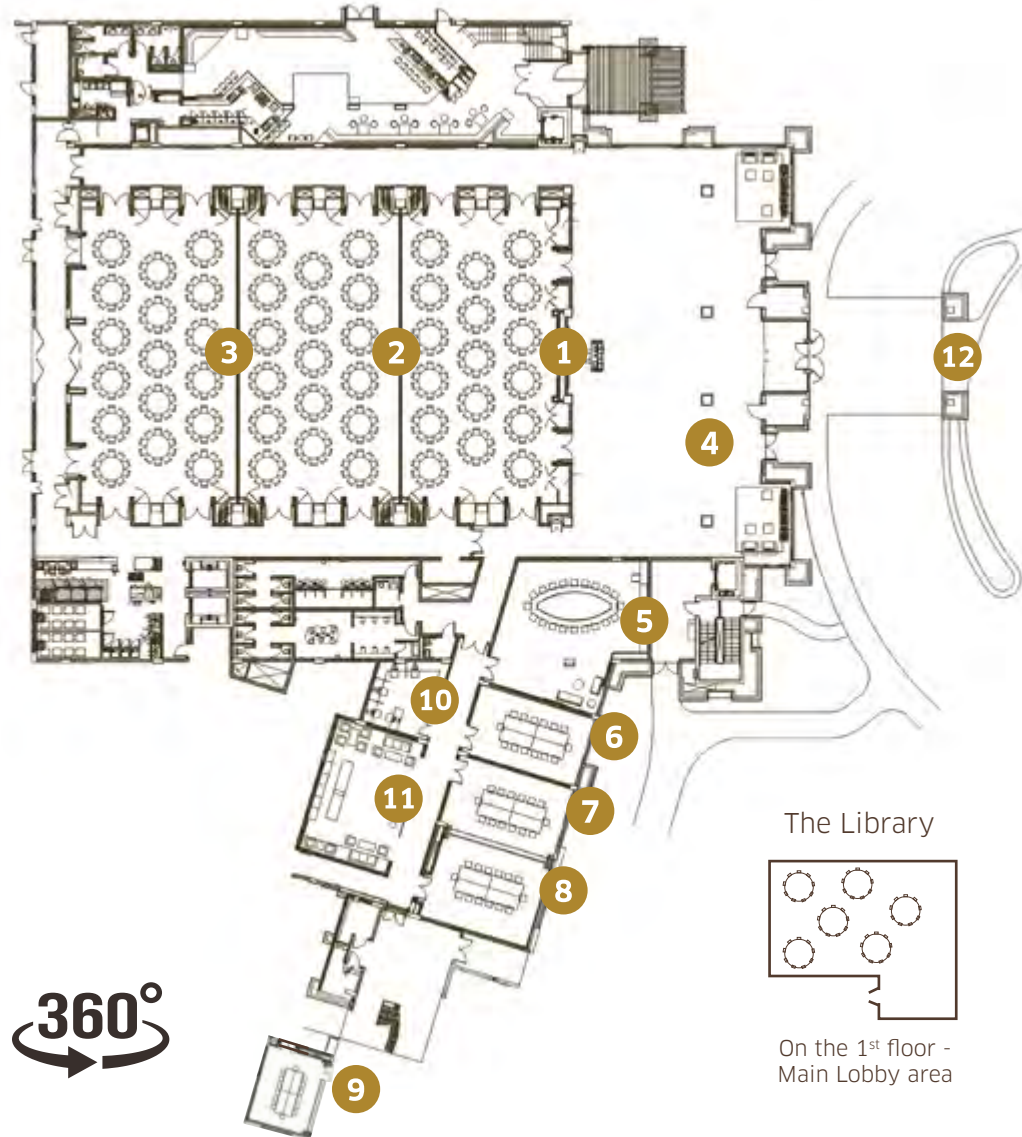
BESPOKE CHOICES

INDOOR

OUTDOOR

WEDDINGS

FLOOR PLAN



FLOOR PLAN

Meeting Venue	Area m ²	Length m	Width m	Height m HP	Height m LP	Classroom	Theatre	U Shape	Boardroom	Cabaret (6)	Cabaret (8)	Round of 10	Cocktail
Moorea Ballroom 1	276	12	23	8.5	6.8	90	215	48	44	90	120	150	175
Moorea Ballroom 2	264.5	11.5	23	8.5	6.8	90	215	48	44	90	120	150	175
Moorea Ballroom 3	276	12	23	8.5	6.8	90	215	48	44	90	120	150	175
Moorea Ballroom 1+2	540	23.5	23	8.5	6.8	180	430	96	88	180	240	300	350
Moorea Ballroom 2+3	540	35.5	23	8.5	6.8	180	430	96	88	180	240	300	350
Moorea Ballroom 1+2+3	816	450	23	8.5	6.8	300	750	-	-	252	336	420	705
Moore pre-function	480	32	15	4.5	3	-	-	-	-	-	-	-	350
Boardroom	110	11	10	3	3	-	-	-	20	-	-	-	-
Tahiti	48.6	9	5.4	3	3	18	24	16	14	18	24	20	-
Bora Bora	50.4	9	5.6	3	3	18	24	20	14	18	24	20	-
Maupiti	63	9	7	3	3	20	30	22	14	24	32	30	-
Bora Bora & Maupiti	113	9	12.6	3	3	45	60	42	26	36	48	60	70
Taha'a	45.7	8.62	5.3	3	3	18	24	15	14	18	24	30	-
The Library	118.8	13.2	9	3	3	42	60	30	28	36	48	50	30
Palm View Garden	474.5	32.5	14.6	-	-	-	-	-	-	120	160	200	200

The above mentioned capacities are only indicative and will vary depending on final set-up and requirement.

- Moorea Ballroom 1
- Moorea Ballroom 2
- Moorea Ballroom 3
- Moorea Pre-Function Area
- Boardroom
- Tahiti Meeting Room
- Bora Bora Meeting Room
- Maupiti Meeting Room
- Taha'a Meeting Room
- Business Centre
- Maupiti+Bora Bora Pre Function Area
- Dedicated entrance to the conference centre

WELLNÆSS & RECREATION



REVITALISE YOUR SENSES

Inspired by the incomparable beauty of the butterfly, Sofitel SPA with L'Occitane reinforces relaxation and rejuvenation. Guests can immerse themselves in the 2,500 square meters spa area encompassing 28 treatment rooms, offering revitalising massages, facials and body treatments in an idyllic Polynesian setting. Sofitel SPA with L'Occitane at Sofitel Dubai The Palm believes in creating unique, personalised and long lasting spa experiences.

- 24 treatment rooms
- Four outdoor cabanas
- Six pools including plunge pool
- Therapeutic pool
- Outdoor infinity pool
- Two steam and sauna rooms
- Two Hammam treatment rooms
- Two ice fountains
- Manicure and pedicure
- Hair salon for ladies and gents





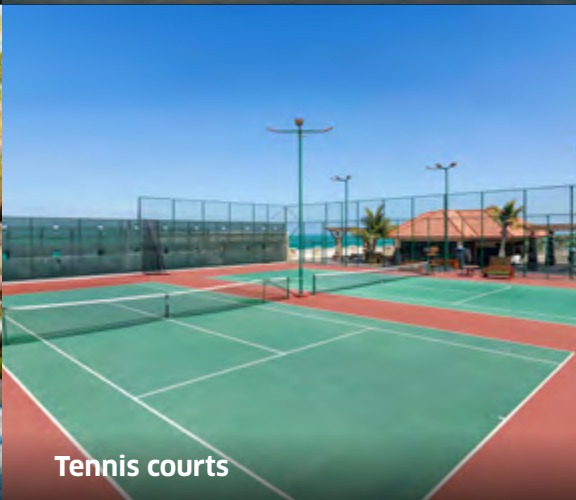
Fitness centre



Motorised Watersports



FloatFit



Tennis courts

STAY ACTIVE

Open 24 hours a day, Sofitel FITNESS is a round the clock fitness destination equipped with top of the range Technogym equipment, offering professional instruction from 7am until 9pm, and a variety of innovative activities designed to keep motivation levels high.

Want a more relaxing adventure on the waters? Head to the resort's private jetty and rent snorkeling gear for incredible up-close views of colorful tropical fish from a different perspective.

- Large fitness health club
- Tennis courts
- Watersports
- Aqua-gym (FloatFit) activities
- X-FITNESS

PLAYFUL PARADISE

Let imaginations take flight at Amura Kids Club, where our experienced team is on hand to entertain children with a whole host of fun and games.

An engaging programme of organised events designed for children between the ages of four to twelve includes beach and pool activities, arts and crafts, treasure hunt and talent show activities that guarantees to keep the spirits high throughout the day.

- Private children's playground
- Indoor Soft Play Area
- Children's activity pools
- Baby pools
- In room baby-sitting service
- Daily children activities
- One cinema
- One ice cream shop
- Complimentary access



RESORT MAP

RESTAURANTS, BARS & LOUNGES

- | | |
|---|-------------------------------------|
| 1 Manava Restaurant
Ground floor | 8 Maui Beach Restaurant & Bar |
| 2 Porterhouse Steaks & Grills
Ground floor | 9 Zoya by Maui |
| 3 Porterhouse Bar
Ground floor | 10 Maui Pool Bar |
| 4 Replay
First floor | 11 Ice Cream Kiosk |
| 5 Hong Loong
Second floor | 12 Moana Seafood Restaurant |
| 6 Olivier's Lounge
Ground floor | 13 Laguna Beach Taverna & Lounge |
| 7 The Premier Lounge
Ground floor | 14 Maui Food Truck |
| | 15 Gelati Ice Cream |
| | 16 The World Eatery
Ground floor |

RESORT FACILITIES

- | | |
|------------------------------|--|
| 17 The Jetty Boat House | 27 Apartment Koru 2 |
| 18 Watersports Activities | 28 Apartment Koru 3 |
| 19 Recreation / Towel Cabana | 29 Waterfall Pool |
| 20 Outdoor Activity Zone | 30 Shuttle Bus Pick-up
Monda Gallery Entrance |
| 21 Amura Kids Club | 31 Grand Ballroom and Meeting
Rooms |
| 22 Activity Pool | |
| 23 Slide Pool | |
| 24 Palm 1 | |
| 25 Palm 2 | |
| 26 Apartment Koru 1 | |

BEAUTY & WELL-BEING

- | | |
|-----------------------------------|--|
| 32 Sofitel FITNESS
First floor | 34 Hair & Beauty Salon
Ground floor |
| 33 Tennis Courts
Second floor | 35 Sofitel SPA with L'Occitane
Ground floor |

RETAIL SHOPS

- | |
|---|
| 36 All-Day Minimart |
| 37 Shopping Arcade
Ground floor - East and West wing |



Take the best photos here

PALM JUMEIRAH - EAST CRESCENT ROAD P.O. BOX: 55558, DUBAI, UNITED ARAB EMIRATES

CONTACT NO: +971 44 55 66 77 EMAIL: H6541@SOFITEL.COM

WWW.SOFITELDUBAITHEPALM.COM



/SOFITELDUBAIPALM

S O F I T E L

DUBAI THE PALM