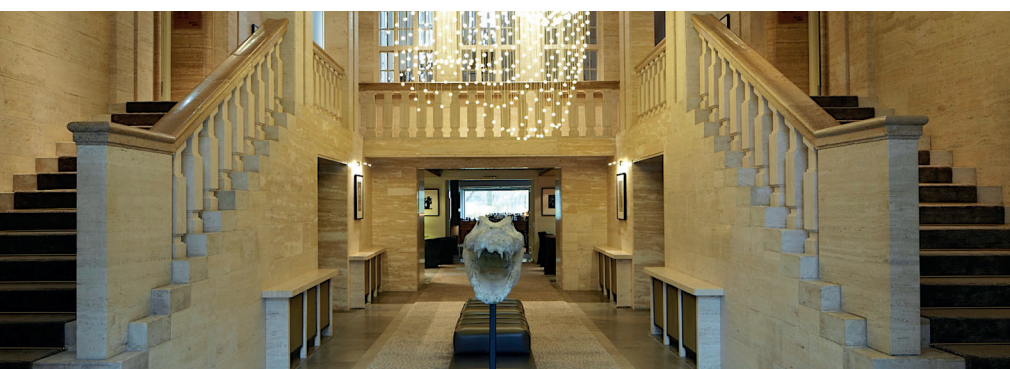


OASIS BETWEEN ZOO AND TIERGARTEN PARK

THE CLASSICIST BUILDING IN THE EMBASSY QUARTER ONCE HOUSED THE ROYAL DANISH LEGATION. SURROUNDED BY A NUMBER OF THE CITY'S SIGHTS AND DIRECTLY ADJACENT TO THE BERLIN ZOO, SO/BERLIN DAS STUE EMANATES THE TRANQUILLITY OF A TRULY EXCEPTIONAL SANCTUARY. INSIDE, ARTISTIC INTERIOR DESIGN, MEDITERRANEAN DINING AND BAR CULTURE UNITE TO INVIGORATE AND INSPIRE. WONDERFULLY EXTRAVAGANT YET SIMULTANEOUSLY RELAXING.

78 ROOMS | EXCLUSIVE ENTRANCE TO THE BERLIN ZOO | SUSANNE KAUFMANN SPA



A LUXURY LIFESTYLE HOTEL

Designer Patricia Urquiola as artistic director of the public lobby, bar and restaurant gave these places a unique atmosphere. LVG Arquitectura finalized the interior of the rooms and suites. For the interior of the 78 rooms high-gloss surfaces perfectly match with rich fabrics. A modern but discreet connection. Eleven of the rooms are equipped with a terrace or balcony.

LOCATION

SO/ Berlin Das Stue is centrally located in the embassy district, between East and West Berlin. Guests can easily stroll through Tiergarten Park to the Brandenburg Gate or the Ku'damm shopping area and visit the numerous parks and museums of the city. Berlin airport (BER) is 40 minutes by car. The Central Station can be reached in 10 minutes.

ROOMS & SUITES

The property's 78 rooms and suites are divided into 7 room categories. Each category, from the entry level Stue Room to the Bel Etage Suite is featuring convincing individual details. The extravagant rooms and suites with views to either Tiergarten Park or the Berlin Zoo are furnished wonderfully exceptional and at the same time highly personal.

Room categories: Bel Etage Suite, Penthouse Suite, Stue Suite, SO Suite, Junior Suite, SO Embassy Room, SO Stue Room.

ROOM FACILITIES

- Parquet floor, free Wi-Fi
- Rain shower
- Coffee/Esspresso machines
- High-resolution 60 inch screens
- Ultra-HD Entertainment system
- Sound system

RESTAURANTS & BAR

THE CASUAL & TERRACE

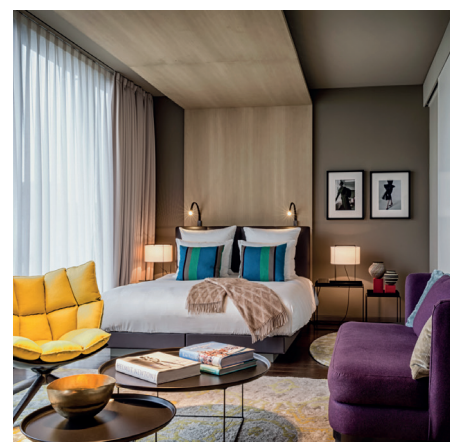
We live what we promise: An elegant and relaxed atmosphere in a modern design is waiting for you. We want you to feel at home while having an unforgettable culinary experience, on the lush green terrace or in our urban living room. Our kitchen is dedicated to seasonal dishes with a special touch, the flavours of Germany are creatively showcased and daily reinterpreted. Focussing on quality, we attach great importance to sustainable products and a fair cooperation with our regional partners. You can also enjoy our dishes on the terrace in the green courtyard.

PRIVATE DINING SALON

45 m² are available for your private dinner or meeting with direct view of the zoo area on the other side.

STUE BAR

A modern casual lifestyle, paired with an exclusive interior design and the cool lounge atmosphere creates the highly appreciated feel-good factor at the Stue Bar. The experienced and passionate bar team is not only mixing perfect classics but also creative compositions, while the focus lies on using seasonal products.



SO/ BERLIN DAS STUE SUITEN

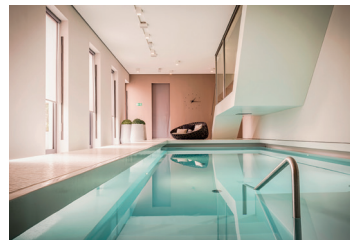
From the largest suite, the Bel Etage Suite with 110m², to the Penthouse Suite and our Junior Suites, our rooms offer you intimate conversation possibilities and spacious, open areas. Five meter high ceilings and a view of the zoo area characterise our suites.



WELLNESS & SPA

The daylight Spa offers three treatment rooms, an indoor swimming pool, a glass sauna and a gym which is open 24hours.

- Susanne Kaufmann™ Cosmetic Products
- Susanne Kaufmann™ classic massages and cosmetic treatments



A METROPOLIS. A CITY OF CONTRASTS.
A CULTURAL MELTING POT FOR CREATIVE & THINKERS FROM ALL
CORNERS OF THE WORLD, A PLACE OF INSPIRATION TO PURSUE YOUR
DREAMS. BERLIN, AN ENTHUSIASTIC METROPOLIS IN THE HEART OF
EUROPE WITH A LIVELY ART AND CULTURAL SCENE. CLOSE TO THE
HOTEL THERE ARE MANY SIGHTS LIKE FOR EXAMPLE THE MEMORIAL
CHURCH AT THE HISTORICAL SHOPPING STREET KURFÜRSTENDAMM.

WHAT TO DO IN BERLIN

Berlin is a constantly changing city with many cultural and culinary sights. Within walking distance you will find the famous department store of the old West Berlin (KaDeWe) and the Tiergarten Park. You can reach Zoo Berlin directly through our exclusive access via the hotel's terrace.

The fastest route to the city centre takes you on a walk through the Tiergarten, past the Victory Column and Bellevue Castle.



MEETING ROOMS

Bel Etage Salon and Libraries

The Bel Etage Salon - a perfect place for cocktail receptions, private dinners and small meetings. You have 65 m² of space and 50 m² of terrace at your disposal. The libraries are an elegant retreat and can accommodate up to 30 people.

Private Dining Salon

The salon offers an extraordinary and at the same time intimate atmosphere for meetings and receptions for up to 30 people.

The Casual & Terrace

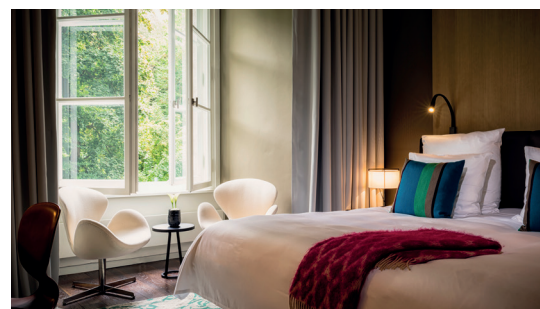
The All-Day-Dining Restaurant The Casual invites you to stay for a while with its generous interior design. It can be booked exclusively for 40 people. On the terrace you can enjoy the close distance to the zoo.

The Casual +

Adjacent to The Casual Restaurant, The Casual + can be rented exclusively for private dinners and functions with up to 16 people. An absolute highlight: the large table in the middle of the room and the view to the kitchen.

Stue Bar und Lobby

Newly interpreted cocktails and a cosy, relaxed atmosphere characterize the Stue Bar. It can be rented for private occasions.



SO/BERLIN Das Stue