



SOFITEL DUBAI DOWNTOWN  
PRESENTATION



SOFITEL  
HOTELS & RESORTS

# THE HOTEL



# THE HOTEL

*The only international 5-star hotel connected to The Dubai Mall through an air-conditioned skywalk. Apart from the immediate proximity to The Dubai Mall and Burj Khalifa, the hotel is a few minutes away from Coca-Cola Arena, Dubai Opera, City Walk and also offers shuttle bus service to Kite Beach, La Mer Beach, The Mall of the Emirates and other destinations.*

SOFITEL HOTELS & RESORTS    @SofitelDubaiDowntown  @SofitelDXBDownT

## PROUD WINNER OF PRESTIGIOUS AWARDS

- 2018:** 'Unique Hotel of the Year 2018 for Dubai' at the Travel & Hospitality Award
- 2018:** 'Luxury City Hotel of the Year 2018' at Luxury Travel Guide
- 2016:** 'World's Leading Hotel Service' at the World Travel Awards Grand Final'
- 2016:** 'Recognition by Conde Nast Traveler US Readers Choice Award amongst the top 20 hotels in Middle East & Africa'
- 2016:** 'New Luxury Hotel of the Year for Dubai' by Luxury Travel Guide Awards
- 2015:** 'World's Leading Hotel Service' at the World Travel Awards Grand Final





# THE LOBBY/ HOTEL ENTRANCE



# LOCATION & ACCESS



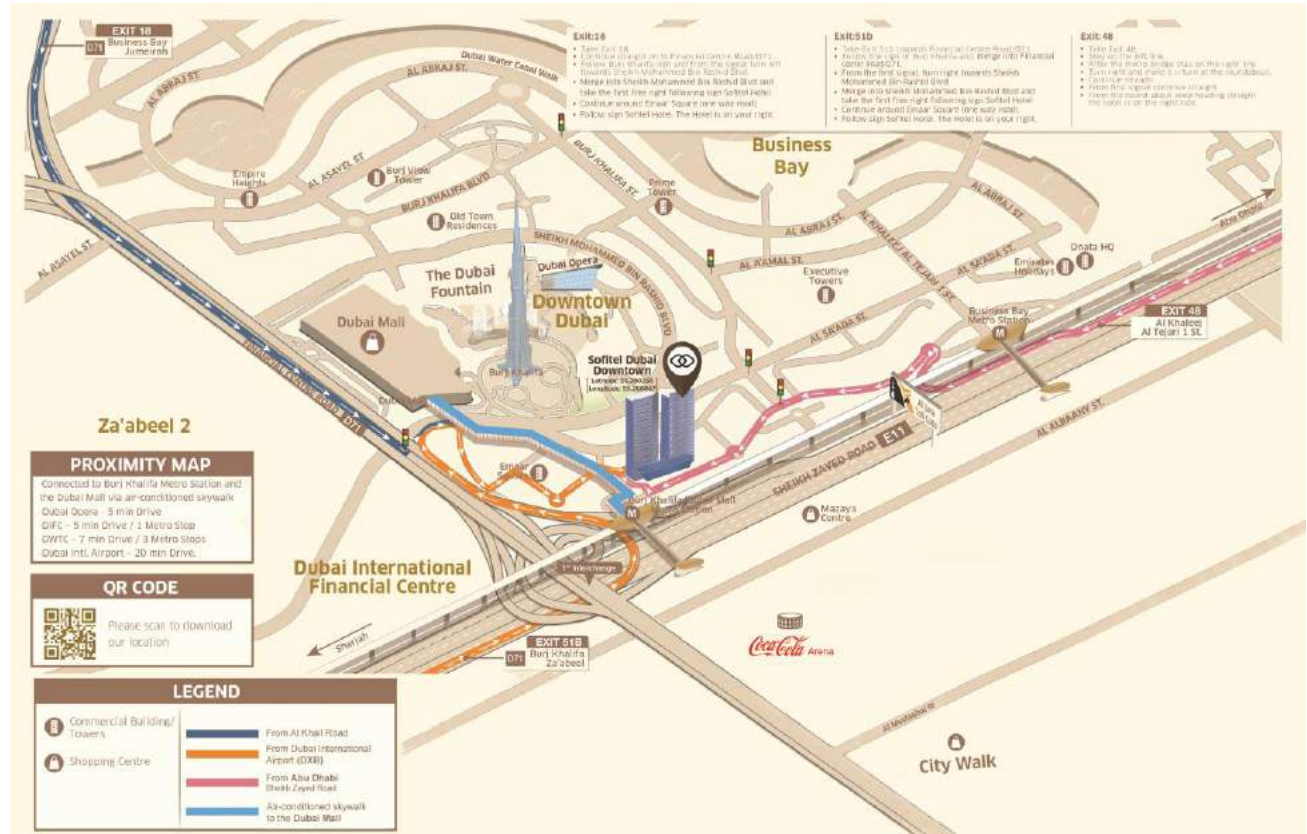
# LOCATION MAP

## Nearby major leisure & entertainment hubs:

- The Dubai Mall (Dubai Aquarium & Underwater Zoo, Dubai Ice Rink, Reel Cinemas, KidZania, SEGA Republic)
- The Burj Khalifa
- The Dubai Fountain
- Coca Cola Arena
- Dubai Opera
- Dubai City Walk
- Dubai World Trade Center
- Dubai International Financial Centre
- Dubai Heritage Museum
- Sheikh Mohammed Center for Cultural Understanding
- Etihad Museum

## Transports:

- Dubai Mall/Burj Khalifa Metro Station (50m)
- Dubai International Airport – DXB (18km)
- Al Maktoum International Airport – DWX (45km)



# ROOMS & SUITES





# 274 CHIC AND SPACIOUS LUXURY ROOMS

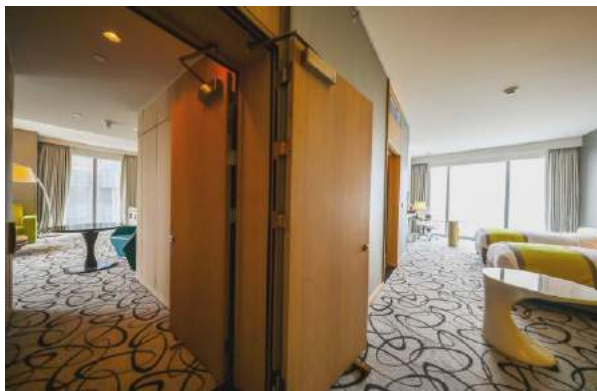




# JUNIOR SUITE, OPERA SUITE AND PRESTIGE SUITE



# TWO-BEDROOM DOWNTOWN SUITE

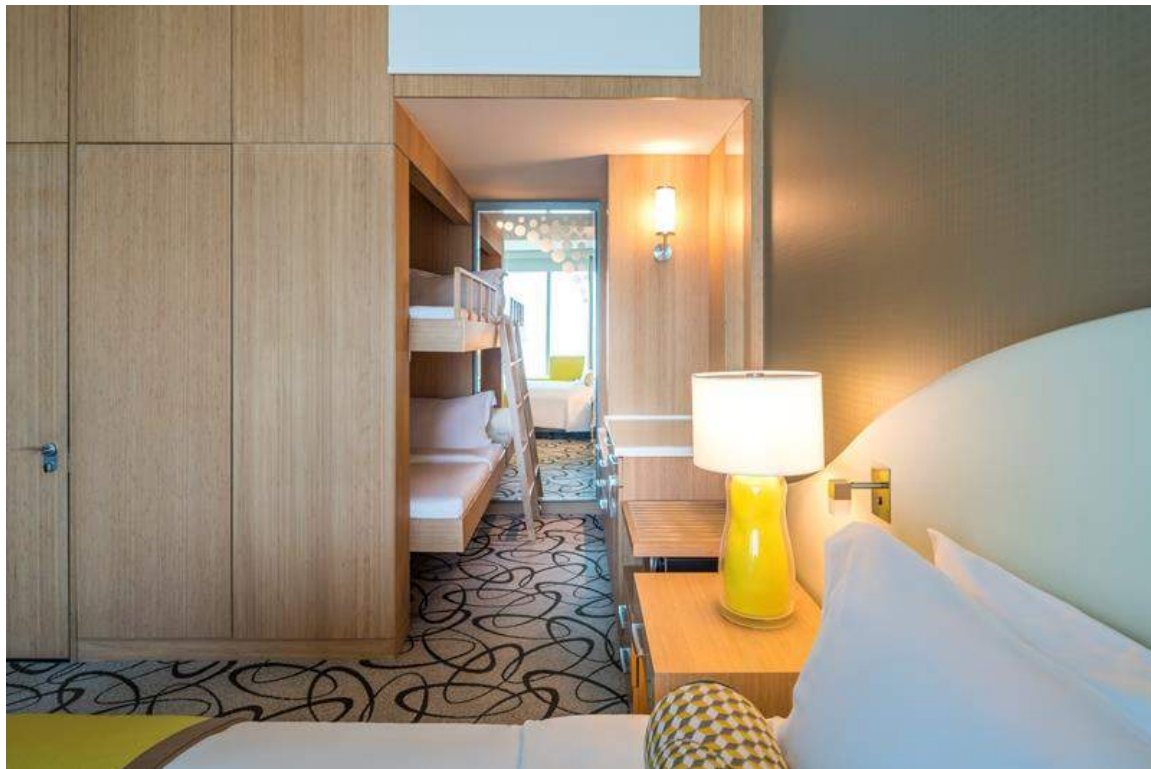


# SOFIE'S LADIES ROOMS / FLOOR



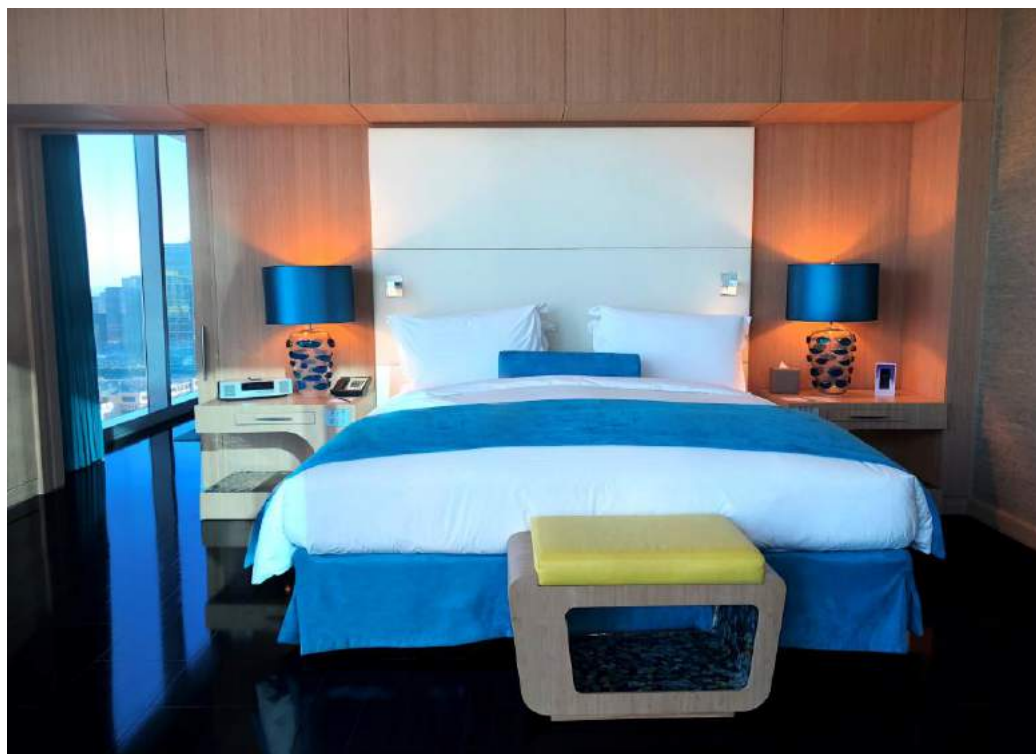


# LUXURY LE PETIT PRINCE FAMILY ROOM

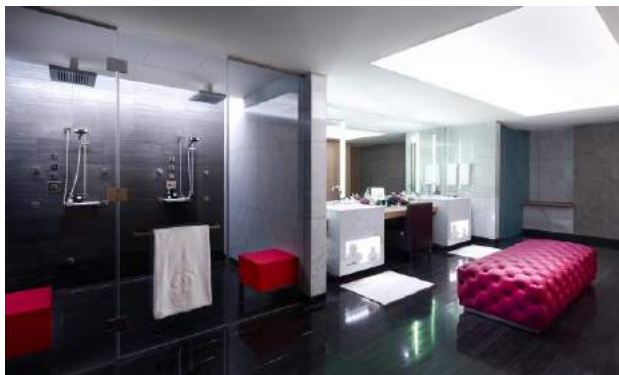




# PRESIDENTIAL SUITES



# ROYAL SUITE



# RESTAURANTS & BARS



# LES CUISINES RESTAURANT - INTERNATIONAL DINING / 2<sup>ND</sup> FLOOR





# MOSAIC POOL BAR 5<sup>TH</sup> FLOOR



# WAKAME – AWARDS WINNER / CONTEMPORARY ASIAN CUISINE / 3RD FLOOR





# CLUB MILLESIME – VIP LOUNGE / 3RD FLOOR



# LA PATISSERIE – LOBBY LOUNGE / GROUND FLOOR





## DATU ASIAN MUSIC CLUB / 5<sup>TH</sup> FLOOR



## ABOVE ROOFTOP LOUNGE / 5<sup>TH</sup> FLOOR



# MODI GEORGIAN RESTAURANT / 31<sup>ST</sup> FLOOR



# RECREATION





## SOFITEL SPA

Ancient traditions from around the world meet the refinement and skill of the latest in French cosmetology to create Sofitel Spa; an exhilarating and rejuvenating experience.

- 8 treatment rooms
- 1 Couples Treatment Room
- Dry sauna and steam room
- Hammam facilities





## SOFITEL FITNESS

- Features a full range of state-of-the-art equipment
- Personal trainers to help plan your fitness session
- Jogging routes around Downtown Dubai



# LE PETIT PRINCE KIDS CLUB / 05<sup>TH</sup> FLOOR



# MAGNIFIQUE MEETINGS





# DIAMOND BALLROOM

- Designed with a spectacular crystal chandelier that sprawls across the entire ceiling, this chic and glittering ballroom can host up to 450 people.
- Located on the ground floor and with a Private Entrance
- Pre-function area with natural daylight and private VIP Majlis



## 12 MEETING ROOMS – WITH NATURAL DAY LIGHT

- Our Team works with you at every step of the way to ensure that your exceptional events become extraordinary experiences.
- Banqueting venues expressing sophistication and modernity, and customized with espresso machines, free WiFi and the latest in audio-visual technology.



# 2 OUTDOOR VENUES – WITH BREATHTAKING VIEWS OF DOWNTOWN DUBAI



GRASS POOL





# WEDDINGS – BALLROOM / LA TERRACE

[Click Here to watch](#)



# KEY HIGHLIGHTS



# KEY HIGHLIGHTS

**The only international 5 star hotel connected to the Dubai Mall**

**Under 10 mins walk in an air-conditioned skywalk**

- Burj Khalifa • The Dubai Mall • Dubai Fountain
- Dubai Aquarium • KidZania
- Virtual Reality Park • Dubai Ice Rink • Emaar Square

**Under 10 mins walk in open Air**

- Coca-Cola Arena • City Walk • Green Planet • Dubai Opera

**3-5 metro stops**

- Dubai World Trade Centre • Dubai International Financial Centre
- Mall of The Emirates • Gold & Diamond Park
- The Museum of The Future

**Complimentary scheduled shuttle service:**

- La Mer • Laguna Waterpark • Kite Beach (Burj Al Arab View)
- Dubai International Financial Centre • Mall of The Emirates
- Emaar Square • Business Bay





## FEEL WELCOME & CONTACT US

BY PHONE +971(0) 4 503 6666

OR BY EMAIL [H7492@SOFITEL.COM](mailto:H7492@SOFITEL.COM)

